

| | |
|------------------------|-------------------------|
| APP CRS 258° | Rwy Idg 7800 |
| | TDZE 1126 |
| | Apt Elev 1135 |

RNAV (RNP) Z RWY 25L

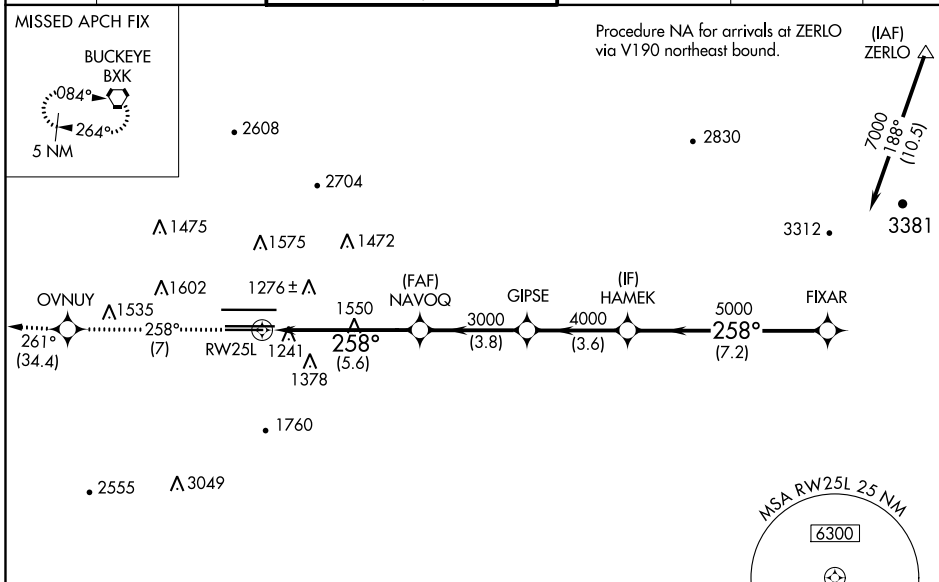
PHOENIX SKY HARBOR INTL (PHX)

▼ For inoperative MALSR, increase RNP 0.11 all Cats visibility to 1¾, RNP 0.30 all Cats visibility to 2. Visibility reduction by helicopters NA. GPS required. For uncompensated Baro-VNAV systems, procedure NA below 1°C (34°F) or above 46°C (116°F). Simultaneous approach authorized with ILS or LOC Rwy 26. Use of FD or AP providing RNAV track guidance required during simultaneous operations.



MISSED APPROACH: Climb to 5000 via track 258° to OVNUY and via track 261° to BKK VORTAC and hold.

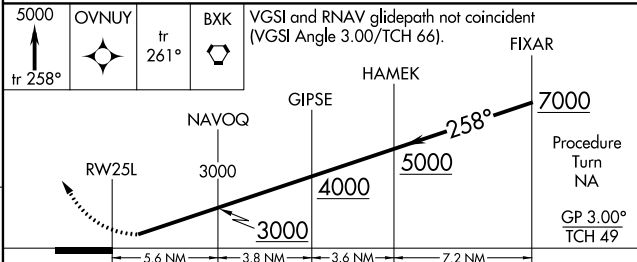
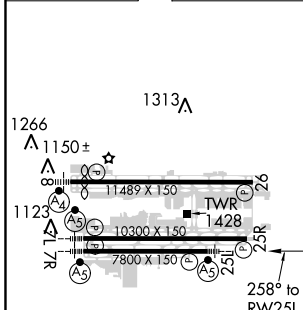
| | | | | | |
|--------------------------|--|---|---|--------------------------------|-------|
| D-ATIS 127.575 | PHOENIX APP CON 128.65 353.9 | PHOENIX TOWER 118.7 278.8 (Rwy 8-26) 120.9 254.3 (Rwy 7L-25R, 7R-25L) | GND CON 119.75 269.2 (N) 132.55 269.2 (S) | CLNC DEL 118.1 269.2 | CPDLC |
|--------------------------|--|---|---|--------------------------------|-------|



SW-4, 15 AUG 2019 to 12 SEP 2019

SW-4, 15 AUG 2019 to 12 SEP 2019

| | | |
|-----------|----------|-----------|
| ELEV 1135 | D | TDZE 1126 |
|-----------|----------|-----------|



| | | | | |
|-------------|---|---------|--------------|---|
| CATEGORY | A | B | C | D |
| RNP 0.11 DA | | 1617-1¼ | 491 (500-1¼) | |
| RNP 0.30 DA | | 1664-1½ | 538 (600-1½) | |

AUTHORIZATION REQUIRED