

JESSE TWO ARRIVAL

AL-322 (FAA)

PHOENIX SKY HARBOR INTL (PHX)
PHOENIX, ARIZONA

PHOENIX APP CON
128.65 353.9
PHOENIX TOWER
118.7 278.8 (Rwy 8-26)
120.9 254.3 (Rwy 7L-25R, 7R-25L)
GND CON
119.75 269.2
D-ATIS
127.575

WINSLOW
112.6 INW
Chan 73
N35°03.70'
W110°47.70'
L-8, H-4

GALLUP
115.1 GUP
Chan 98
N35°28.56'
W108°52.36'
L-8, H-4

DRAKE
114.1 DRK
Chan 88

JESSE
N34°35.01'
W110°56.63'

NEPTN
N34°45.09'
W110°10.50'

ZUNI
113.4 ZUN
Chan 81
N34°57.95'-W109°09.27'
L-8, H-4

GUMMO
N34°19.06'
W111°01.54'

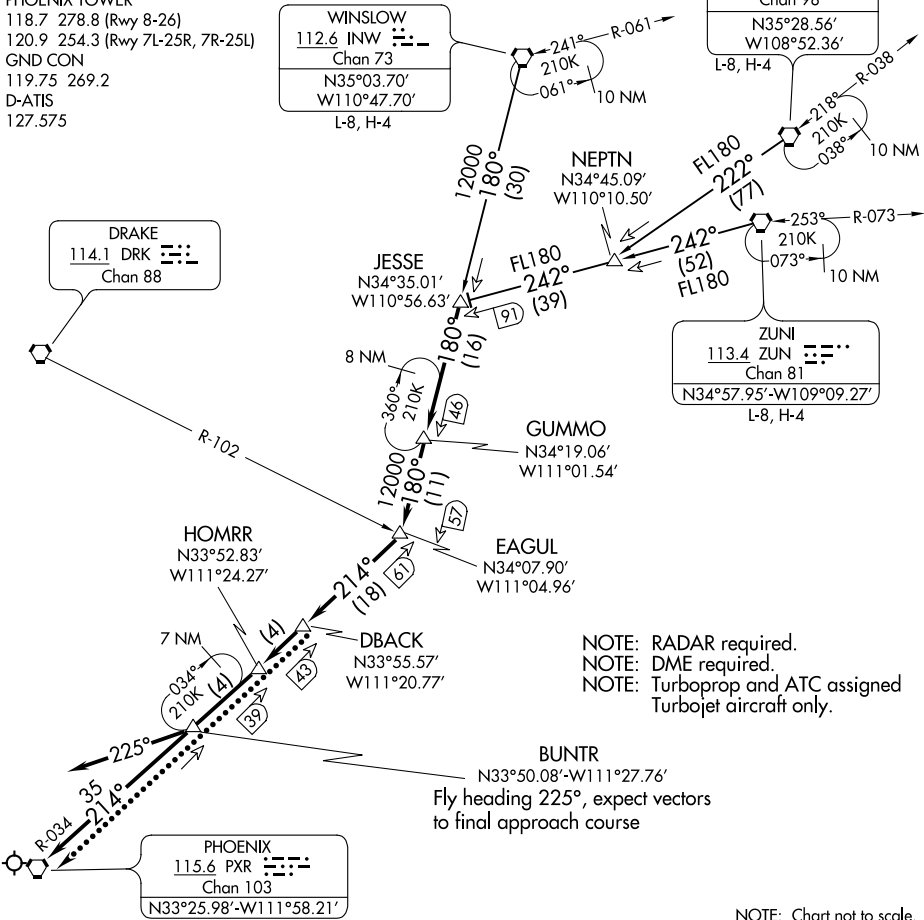
HOMRR
N33°52.83'
W111°24.27'

EAGUL
N34°07.90'
W111°04.96'

DBACK
N33°55.57'
W111°20.77'

BUNTR
N33°50.08'-W111°27.76'

PHOENIX
115.6 PXR
Chan 103
N33°25.98'-W111°58.21'



SW-4, 15 AUG 2019 to 12 SEP 2019

SW-4, 15 AUG 2019 to 12 SEP 2019

NOTE: Chart not to scale.

ARRIVAL ROUTE DESCRIPTION

- GALLUP TRANSITION (GUP.JESSE2): From over GUP VORTAC on GUP R-222 and ZUN R-242 to JESSE INT. Thence. . . .
- WINSLOW TRANSITION (INW.JESSE2): From over INW VORTAC on INW R-180 to JESSE INT. Thence. . . .
- ZUNI TRANSITION (ZUN.JESSE2): From over ZUN VORTAC on ZUN R-242 to JESSE INT. Thence. . . .
-From over JESSE on INW R-180 to GUMMO, then on INW R-180 to EAGUL, then on PXR R-034 to DBACK, then on PXR R-034 to HOMRR, then on PXR R-034 to PXR VORTAC.

LOST COMMUNICATIONS

After DBACK, proceed direct to PXR VORTAC.

JESSE TWO ARRIVAL

(JESSE.JESSE2) 27APR17

PHOENIX, ARIZONA
PHOENIX SKY HARBOR INTL (PHX)