

LOC/DME I-PHX 111.5 Chan 52	APP CRS 078°	Rwy Idg 10300 TDZE 1116 Apt Elev 1135
---	------------------------	--

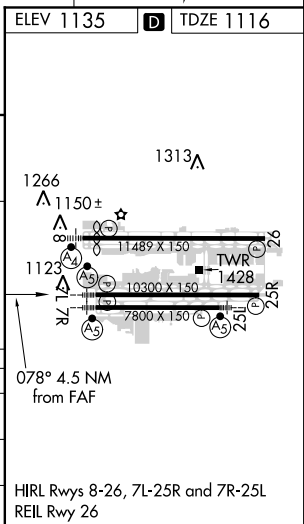
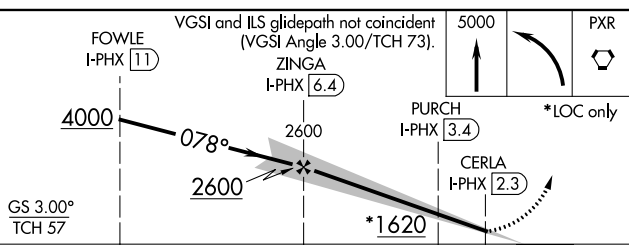
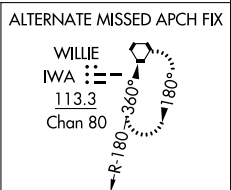
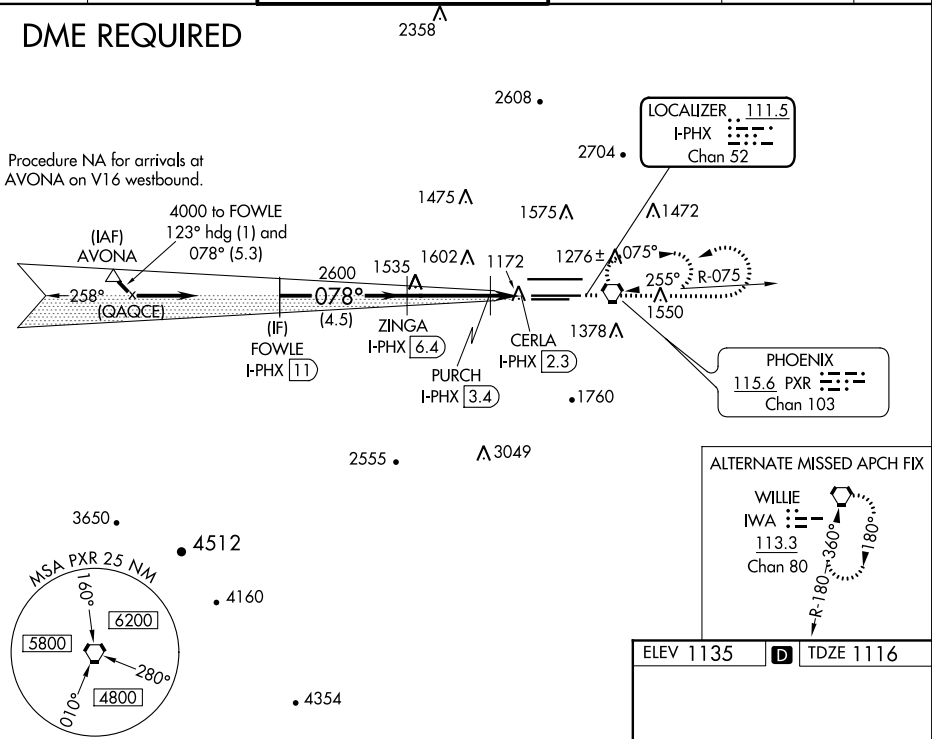
ILS or LOC/DME RWY 7L

PHOENIX SKY HARBOR INTL (PHX)

<p>For inoperative MALSRS, increase S-LOC 7L C, D visibility to RVR 5000.</p>	<p>MALSRS</p>	<p>MISSED APPROACH: Climb to 5000 then left turn direct PXR VORTAC and hold.</p>			
		D-ATIS 127.575	PHOENIX APP CON 128.65 353.9	PHOENIX TOWER 118.7 278.8 (Rwy 8-26) 120.9 254.3 (Rwy 7L-25R, 7R-25L)	GND CON 119.75 269.2 (N) 132.55 269.2 (S)

DME REQUIRED

Procedure NA for arrivals at AVONNA on V16 westbound.



CATEGORY	A	B	C	D
S-ILS 7L	1326/24 210 (200-½)			
S-LOC 7L	1460/24	344 (400-½)	1460/30	344 (400-¾)
CIRCLING	1740-1	605 (700-1)	1740-1¾ 605 (700-1¾)	1920-2½ 785 (800-2½)

SW-4, 15 AUG 2019 to 12 SEP 2019

SW-4, 15 AUG 2019 to 12 SEP 2019