

LOC/DME I-SYQ 111.75 Chan 54 (Y)	APP CRS 078°	Rwy Idg 10591 TDZE 1118 Apt Elev 1135
--	------------------------	--

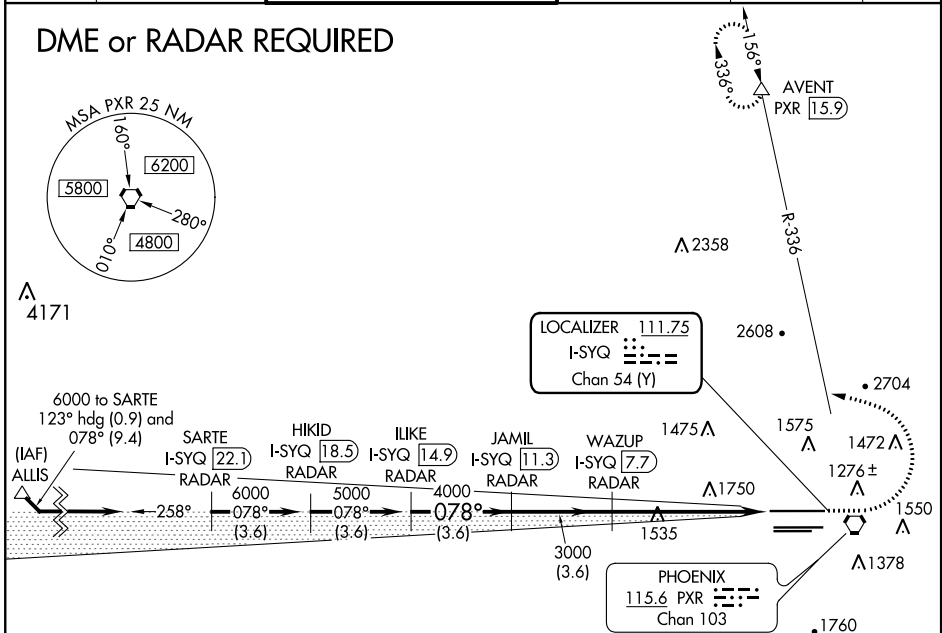
ILS or LOC RWY 8

PHOENIX SKY HARBOR INTL (PHX)

<p>Simultaneous approach authorized with Rwy 7R and RNAV (RNP) Z Rwy 7L, RNAV (GPS) Y Rwy 7L. DME required.</p>	MALSF	MISSED APPROACH: Climb to 3000, then climbing left turn to 5000 via heading 280° and PXR R-336 to AVENT/PXR 15.9 DME and hold.
---	-------	--

D-ATIS 127.575	PHOENIX APP CON 128.65 353.9	PHOENIX TOWER 118.7 278.8 (Rwy 8-26) 120.9 254.3 (Rwy 7L-25R, 7R-25L)	GND CON 119.75 269.2 (N) 132.55 269.2 (S)	CLNC DEL 118.1 269.2	CPDLC
--------------------------	--	---	---	--------------------------------	-------

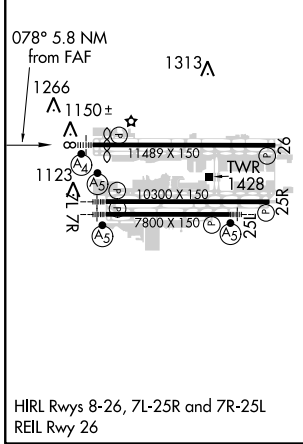
DME or RADAR REQUIRED



SW-4, 15 AUG 2019 to 12 SEP 2019

SW-4, 15 AUG 2019 to 12 SEP 2019

ELEV 1135	D	TDZE 1118
-----------	----------	-----------



VGSi and ILS glidepath not coincident (VGSi Angle 3.00/TCH 69).			
ILIKE I-SYQ 14.9 RADAR	JAMIL I-SYQ 11.3 RADAR	WAZUP I-SYQ 7.7 RADAR	PHOENIX 115.6 PXR Chan 103
5000	4000	3000	1.9
GS 3.00° TCH 55		Use I-SYQ DME when on LOC course.	
Procedure Turn NA		AVENT △	
3.6 NM		3.6 NM 5.7 NM	
A	B	C	D
S-ILS 8	1368-1 250 (300-1)		
S-LOC 8	1860-1 742 (800-1)	1860-1¼ 742 (800-2¼)	1860-2¼ 742 (800-2½)
CIRCLING	1860-1 725 (800-1)	1860-1¼ 725 (800-1¼)	1920-2½ 785 (800-2½)