

LOC/DME I-AHA 110.75 Chan 44 (Y)	APP CRS 078°	Rwy Idg 7800 TDZE 1116 Apt Elev 1135
--	------------------------	---

ILS or LOC RWY 7R

PHOENIX SKY HARBOR INTL (PHX)

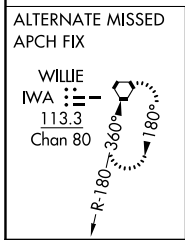
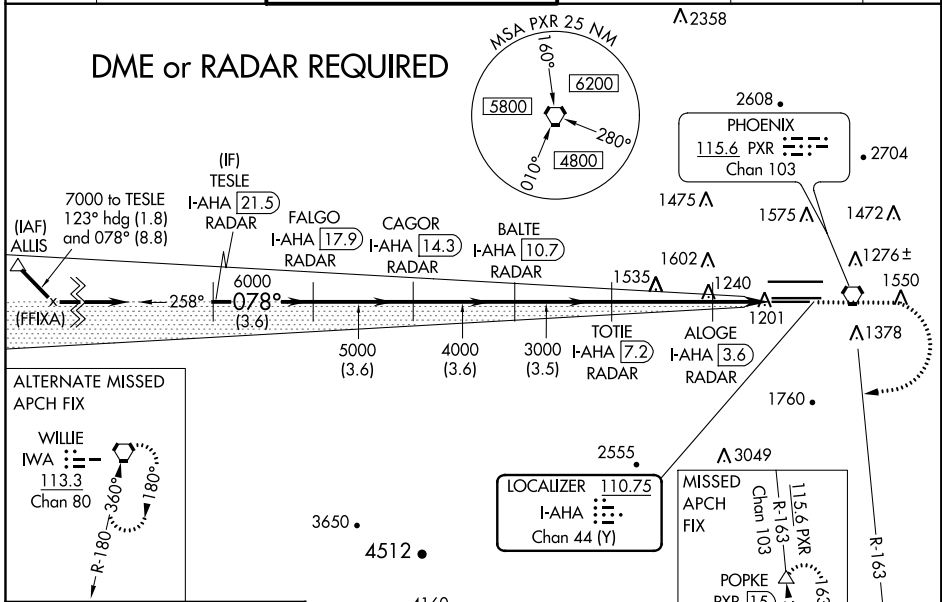
⚠ Inoperative table does not apply to S-ILS 7R. Simultaneous approach authorized with ILS or LOC Rwy 8. DME required. Visibility reduction by helicopters NA. LOC procedure NA during simultaneous operations. For inoperative MALSR, increase S-LOC 7R visibility Cats A/B to 1 mile and Cats C/D to 1½ mile.



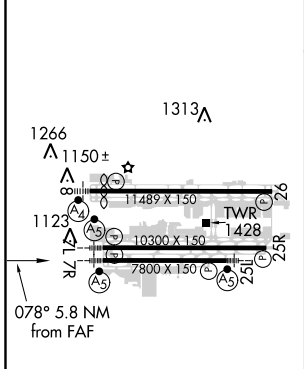
MISSED APPROACH: Climb to 3300 then climbing right turn to 5000 on heading 250° and PXR VORTAC R-163 to POPKE/PXR 15 DME and hold.

D-ATIS 127.575	PHOENIX APP CON 128.65 353.9	PHOENIX TOWER 118.7 278.8 (Rwy 8-26) 120.9 254.3 (Rwy 7L-25R, 7R-25L)	GND CON 119.75 269.2 (N) 132.55 269.2 (S)	CLNC DEL 118.1 269.2	CPDLC
--------------------------	--	---	---	--------------------------------	-------

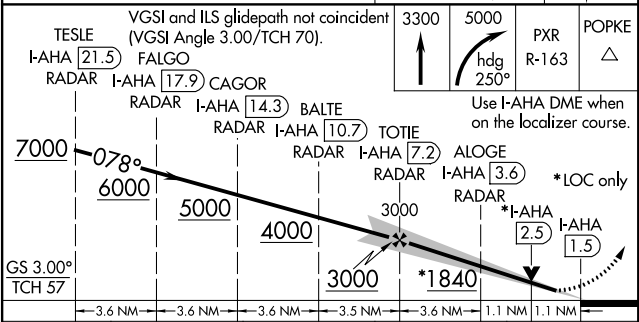
DME or RADAR REQUIRED



ELEV 1135	D	TDZE 1116
------------------	----------	------------------



HIRL Rwy 8-26, 7L-25R and 7R-25L REIL Rwy 26					
FAF to MAP 5.8 NM					
Knots	60	90	120	150	180
Min:Sec	5:48	3:52	2:54	2:19	1:56



SW-4, 15 AUG 2019 to 12 SEP 2019

SW-4, 15 AUG 2019 to 12 SEP 2019