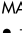


LOC/DME I-RJG <b>110.75</b> Chan 44 (Y)	APP CRS <b>258°</b>	Rwy Idg TDZE Apt Elev	<b>7800</b> <b>1126</b> <b>1135</b>
---	------------------------	-----------------------------	---

# ILS or LOC RWY 25L

PHOENIX SKY HARBOR INTL (PHX)

**⚠** Autopilot coupled approach NA below 1925.  
**⚠** Simultaneous approach authorized with Rwy 26.

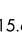
**MALS**  MISSED APPROACH: Climb to 3000 then climbing left turn to 5000 on heading 130° and PXR R-163 to POPKE/15 DME and hold.

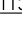
D-ATIS <b>127.575</b>	PHOENIX APP CON <b>128.65 353.9</b>	PHOENIX TOWER <b>118.7 278.8</b> (Rwy 8-26) <b>120.9 254.3</b> (Rwy 7L-25R, 7R-25L)	GND CON <b>119.75 269.2</b> (N) <b>132.55 269.2</b> (S)	CLNC DEL <b>118.1 269.2</b>	CPDLC
--------------------------	--	---	---	--------------------------------	-------

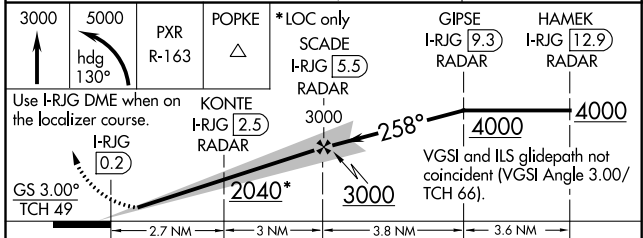
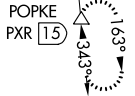
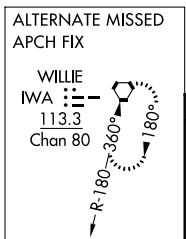
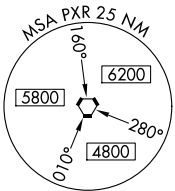
△ 2358

## DME or RADAR REQUIRED

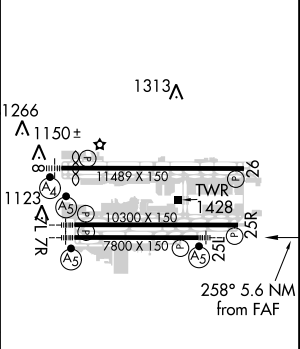
**LOCALIZER 110.75**  
I-RJG   
Chan 44 (Y)

**PHOENIX 115.6 PXR**   
Chan 103

**WILLIE 113.3 IWA**   
Chan 80



ELEV 1135	<b>D</b>	TDZE 1126
-----------	----------	-----------



CATEGORY	A	B	C	D
S-ILS 25L	1326-1/2 200 (200-1/2)			
S-LOC 25L	1520-1/2 394 (400-1/2)		1520-3/4 394 (400-3/4)	
CIRCLING	1740-1 605 (700-1)	1740-1 3/4 605 (700-1 3/4)	1920-2 785 (800-2)	

HIRL Rwy 8-26, 7L-25R and 7R-25L REIL Rwy 26					
FAF to MAP 5.6 NM					
Knots	60	90	120	150	180
Min:Sec	5:36	3:44	2:48	2:14	1:52

SW-4, 15 AUG 2019 to 12 SEP 2019

SW-4, 15 AUG 2019 to 12 SEP 2019