

BUCKEYE FOUR DEPARTURE

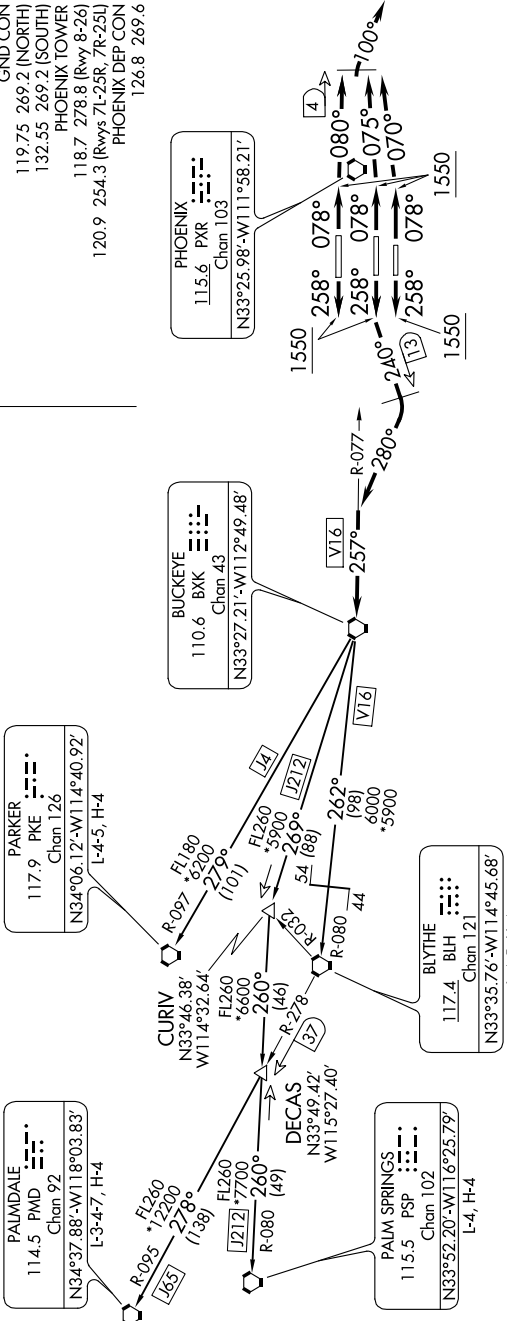
AL-322 (FAA)

PHOENIX SKY HARBOR INTL (PHX)
PHOENIX, ARIZONA

SW-4, 15 AUG 2019 to 12 SEP 2019

**TOP ALTITUDE:
8000**

- D-ATIS 127.575
- CLINC DEL 118.1 269.2
- CPDLC
- GND CON 119.75 269.2 (NORTH)
- 132.55 269.2 (SOUTH)
- PHOENIX TOWER 118.7 278.8 (Rwy 8-26)
- 120.9 254.3 (Rwys 7L-25R, 7R-25L)
- PHOENIX DEP CON 126.8 269.6



TAKEOFF MINIMUMS

Rwys 7L/7R/8: Standard with minimum climb of 300' per NM to 8000.
 Rwys 25L/25R/26: Standard with minimum climb of 350' per NM to 8000.

NOTE: Restricted to turbojet and turboprop aircraft only.

NOTE: RADAR and DME required.

NOTE: Aircraft requesting FL 220 and below must file BLYTHE TRANSITION.

NOTE: Turbojets landing LAX, file PARKER TRANSITION.

NOTE: Aircraft landing other than LAX and turboprops landing at LAX:

Requesting FL240 and above, file PALMDALE or PALM SPRINGS TRANSITION.

NOTE: Chart not to scale.

(NARRATIVE ON FOLLOWING PAGE)

SW-4, 15 AUG 2019 to 12 SEP 2019

BUCKEYE FOUR DEPARTURE