

ARLIN FOUR ARRIVAL

AL-322 (FAA)

PHOENIX, ARIZONA

SW-4, 15 AUG 2019 to 12 SEP 2019

ARRIVAL ROUTE DESCRIPTION

BLYTHE TRANSITION (BLH.ARLIN4): From over BLH VORTAC on BLH R-089 and IWA R-256 to ARLIN INT. Thence. . . .

MOHAK TRANSITION (MOHAK.ARLIN4): From over MOHAK INT on GBN R-247 and BXK R-215 to HYDRR INT, then on IWA R-256 to ARLIN INT. Thence. . . .

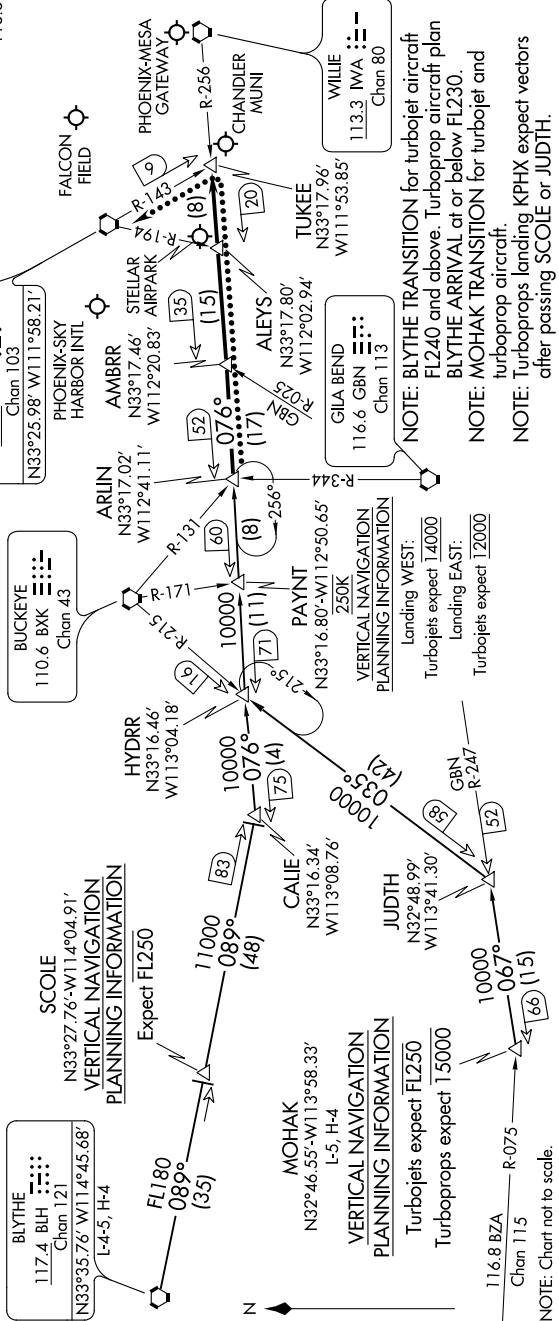
PHOENIX SKY HARBOR INTL: Rwy 7L/R or 8: From over ARLIN, Expect vectors to final approach course; Rwy 25L/R or 26: From over ARLIN, on IWA R-256 to TUKEE. Expect vectors to final approach course prior to TUKEE.

SATELLITE AIRPORTS: Expect vectors after passing SCOPE or JUDTH.

LOST COMMUNICATIONS: After ARLIN, on IWA R-256 and PXR R-143 to PXR VORTAC.

NOTE: RADAR required
NOTE: DME required

- PHOENIX APP CON 124.1 256.9
- PHOENIX TOWER 118.7 278.8 (Rwy 8-26)
- 120.9 254.3 (Rwy 7L-23R, 7R-25L)
- PHOENIX GND CON 119.75 269.2
- CHANDLER MUNI ATIS 128.325
- FALCON FIELD ATIS 118.25
- PHOENIX DEER VALLEY ATIS 126.5
- PHOENIX-MESA GATEWAY ATIS* 133.5 270.275
- PHOENIX SKY HARBOR D-ATIS 127.575
- SCOTTSDALE ATIS* 118.6
- PHOENIX-DEER VALLEY
- PHOENIX SKY HARBOR INTL
- AMBRR N33°17.02' W112°41.11'
- STELLAR N33°17.46' W112°20.83' AIRPARK
- ALWAYS N33°17.80' W112°02.94'
- GILA BEND N33°17.80' W112°02.94'
- TUKEE N33°17.96' W111°53.85'
- CHANDLER MUNI
- PHOENIX-MESA GATEWAY
- FALCON FIELD
- SCOTTSDALE
- PHOENIX-PXR N33°25.98' W111°58.21'
- PHOENIX-SKY HARBOR INTL



SW-4, 15 AUG 2019 to 12 SEP 2019

ARLIN FOUR ARRIVAL

PHOENIX, ARIZONA