

17285

# AIRPORT DIAGRAM

METROPOLITAN OAKLAND INTL (OAK)  
OAKLAND, CALIFORNIA

AL-294 (FAA)

D-ATIS  
133.775  
OAKLAND TOWER  
118.3 291.65 (RWYS 10L-28R, 10R-28L, 15-33)  
127.2 256.9 (RWY 12-30)  
GND CON  
121.75 (RWY 12-30)  
121.9 (RWYS 10L-28R, 10R-28L, 15-33)  
CLNC DEL  
121.1  
CPDLC

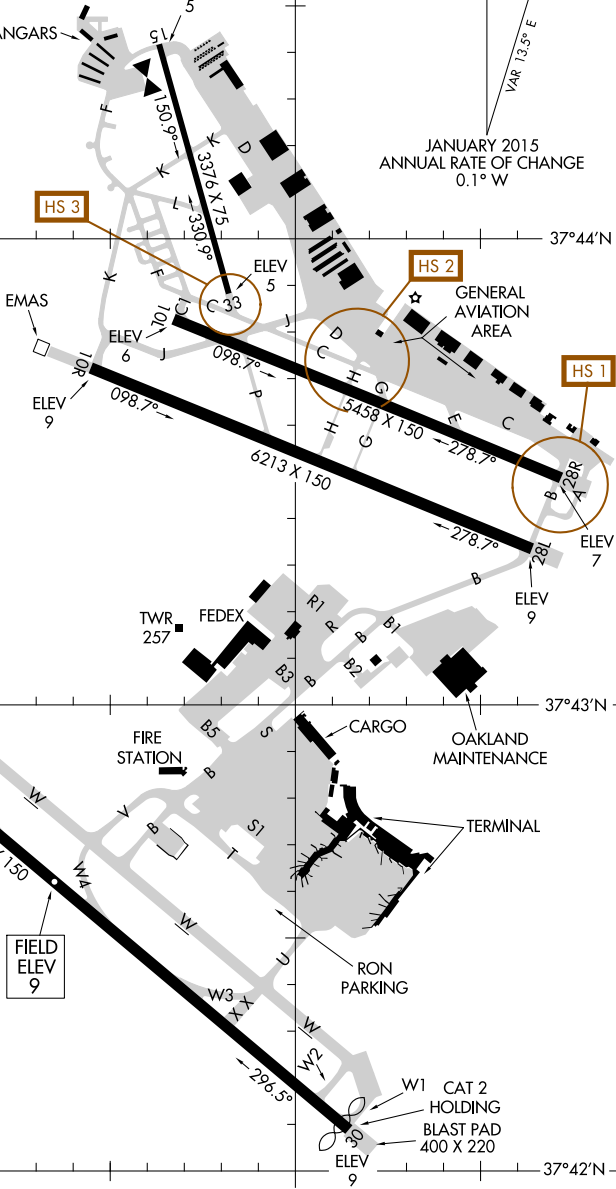
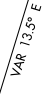
D

122°14'W

122°13'W

HS 3

JANUARY 2015  
ANNUAL RATE OF CHANGE  
0.1° W



SW-2, 15 AUG 2019 to 12 SEP 2019

SW-2, 15 AUG 2019 to 12 SEP 2019

RWY 10L-28R  
PCN 67 F/B/W/T  
RWY 10R-28L  
PCN 59 F/B/W/T  
RWY 12-30  
PCN 75 F/A/W/T  
RWY 15-33  
S-12.5

CAUTION: BE ALERT TO RUNWAY CROSSING CLEARANCES.  
READBACK OF ALL RUNWAY HOLDING INSTRUCTIONS IS REQUIRED.