

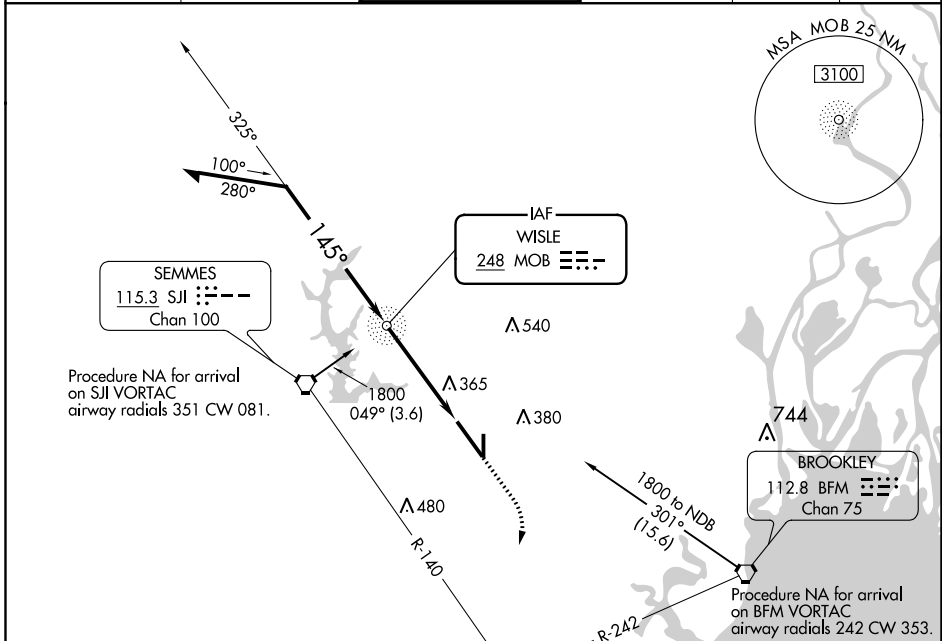
NDB MOB <b>248</b>	APP CRS <b>145°</b>	Rwy Idg <b>8502</b>
		TDZE <b>215</b>
		Apt Elev <b>219</b>

# NDB RWY 15

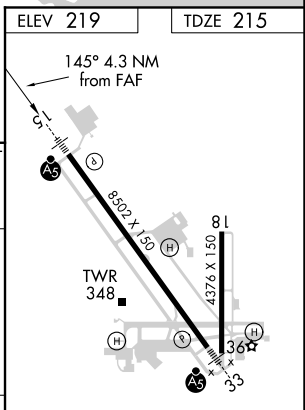
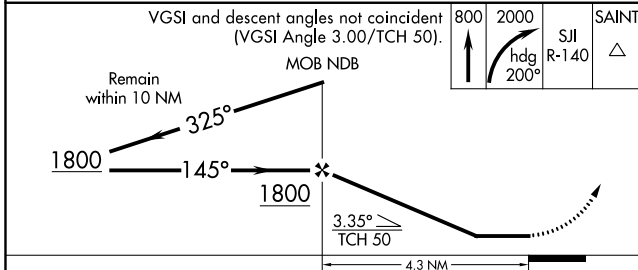
MOBILE RGNL (MOB)

<p>For inop ALS, increase Cat A/B visibility to RVR 5500.</p>		<p>MISSED APPROACH: Climb to 800 then climbing right turn to 2000 on heading 200° and SJI VORTAC R-140 to SAINT INT/BFM 9.2 DME and hold.</p>

ATIS <b>124.75 257.85</b>	MOBILE APP CON * <b>118.5 269.3</b>	MOBILE TOWER * <b>118.3 (CTAF) 239.0</b>	GND CON <b>121.9 348.6</b>	CLNC DEL <b>119.85</b>	UNICOM <b>122.95</b>
------------------------------	--	---	-------------------------------	---------------------------	-------------------------



ELEV 219	TDZE 215
----------	----------



CATEGORY	A	B	C	D
S-15	740/40	525 (600-¾)	740/55	525 (600-1)
CIRCLING	740-1	521 (600-1)	740-1½ 521 (600-1½)	780-2 561 (600-2)

MIRL Rwy 18-36				
HIRL Rwy 15-33				
FAF to MAP 4.3 NM				
Knots	60	90	120	150
Min:Sec	4:18	2:52	2:09	1:43

SE-4, 15 AUG 2019 to 12 SEP 2019

SE-4, 15 AUG 2019 to 12 SEP 2019