

# TUSTI TWO DEPARTURE (RNAV)

AL-237 (FAA)

LOS ANGELES INTL (LAX)  
LOS ANGELES, CALIFORNIA

SW-15 AUG 2019 to 12 SEP 2019

**TOP ALTITUDE:**  
**17000**

**TAKEOFF MINIMUMS**

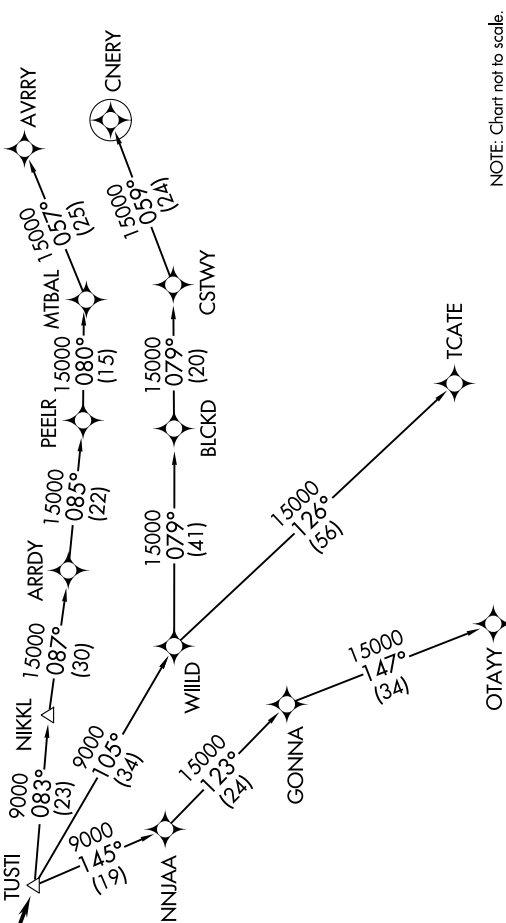
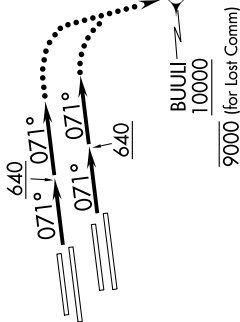
Rwys 6L/R, 7L/R: Standard with minimum climb of 500' per NM to 640.  
Rwys 24L/R, 25L/R: NA-ATC.

- NOTE: DME/DME/IRU or GPS required.
- NOTE: RNAV 1.
- NOTE: RADAR required.
- NOTE: Turbojet aircraft only.



D-ATIS DEP 135.65  
CLNC DEL 120.35 327.0  
CPDIC  
GND CON  
(N) 121.65 327.0  
(S) 121.75 327.0  
(W) 121.4 327.0  
LOS ANGELES TOWER  
(N) 133.9 239.3  
(S) 120.95 379.1  
SOCAL DEP CON  
124.3 363.2 (045°-224°)  
125.2 263.025 (225°-044°)

TTRUE  
LVELL  
WURMO



NOTE: Chart not to scale.

(NARRATIVE ON FOLLOWING PAGE)

SW-3, 15 AUG 2019 to 12 SEP 2019

# TUSTI TWO DEPARTURE (RNAV)