

# SEAVU TWO ARRIVAL

SW-3, 15 AUG 2019 to 12 SEP 2019

SOCAL APP CON  
124.05 353.775  
LOS ANGELES TOWER  
N 133.9 239.3  
S 120.95 379.1  
D-ATIS ARR  
133.8

NOTE: Expect runway assignment on initial contact with Southern California TRACON.  
In the event of lost communications prior to runway assignment proceed via ILS Rwy 25L.

POMONA  
110.4 POM  
Chan 41

SEAVU  
N33°58.34'  
W117°29.31'  
14000  
12000

CATAW  
N33°55.91'  
W117°22.49'  
14000

PECOX  
N33°57.13'  
W117°19.97'  
14000

ENGLI  
N33°56.88'  
W117°11.12'  
16000

KONZL  
N33°57.26'  
W117°06.69'  
17000 280K

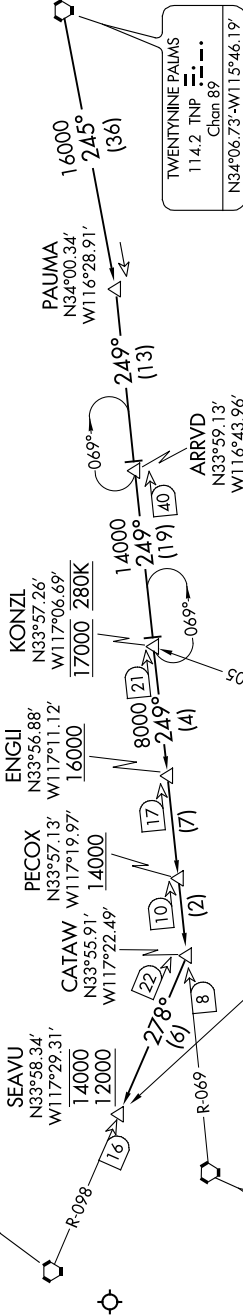
PAUMA  
N34°00.34'  
W116°28.91'  
16000

TWENTYNINE PALMS  
114.2 TNP  
Chan 89  
N34°06'73"-W115°46.19'  
L-4, H-4

PARADISE  
112.2 PDZ  
Chan 59

HOMELAND  
113.4 HDF  
Chan 85

JULIAN  
114.0 JU  
Chan 87



NOTE: DME or RADAR required.

**ARRIVAL ROUTE DESCRIPTION**

**TWENTYNINE PALMS TRANSITION (TNP.SEAVU2):**  
From over TNP VORTAC on TNP R-245 and PDZ R-069 to CATAW, then on POM R-098 to SEAVU.

**LOST COMMUNICATIONS:** In the event of lost communication prior to runway assignment proceed via ILS Rwy 25L.

NOTE: Chart not to scale.

# SEAVU TWO ARRIVAL

SW-3, 15 AUG 2019 to 12 SEP 2019