

| | | | |
|--|------------------------|---|-------------|
| WAAS CH 61207 W06B | APP CRS 071° | Rwy Idg TDZE 116 Apt Elev 128 | 9748 |
|--|------------------------|---|-------------|

RNAV (GPS) Y RWY 6R

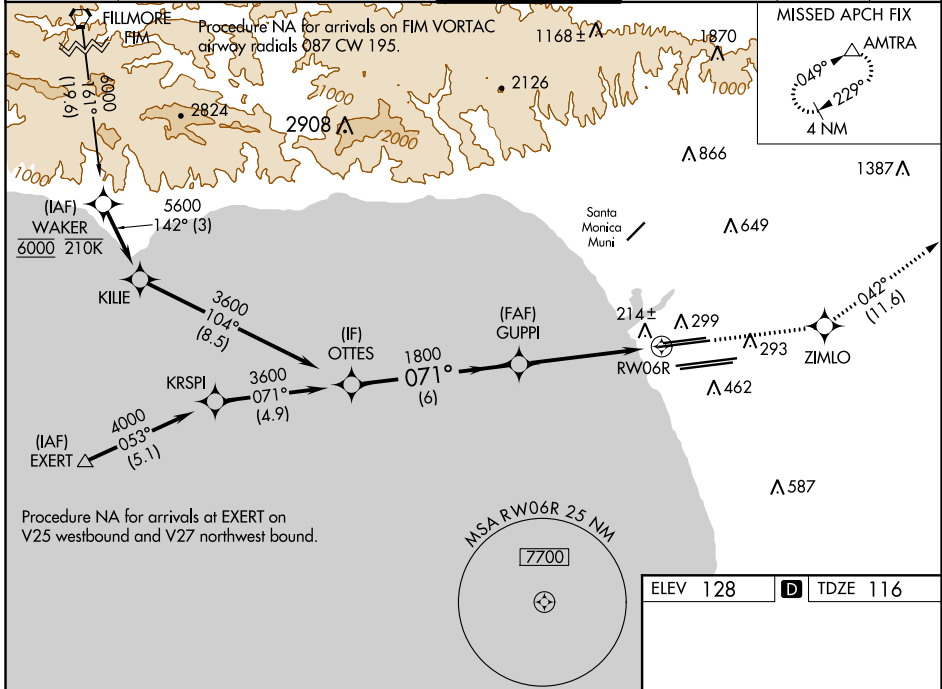
LOS ANGELES INTL (LAX)

▽ For uncompensated Baro-VNAV systems, LNAV/VNAV NA below 5°C (41°F) or above 54°C (130°F). DME/DME RNP-0.3 NA. For inop ALS, increase LNAV/VNAV all Cats visibility to RVR 4500, LNAV Cat C and D visibility to RVR 5500. Simultaneous approach authorized. LNAV procedure NA during simultaneous operations. Use of FD or AP providing RNAV track guidance required during simultaneous operations. # RVR 1800 authorized with use of FD or AP or HUD to DA.



MISSED APPROACH:
Climb to 3000 direct ZIMLO and track 042° to AMTRA and hold.

| | | | | | | |
|---|--|--|--|---|---------------------------------|-------|
| D-ATIS ARR 133.8 DEP 135.65 | SOCAL APP CON 124.3 363.2 (APCH FM WEST) 124.5 235.975 (225°-044°) | 124.9 269.0 (090°-224°) 128.5 360.7 (045°-089°) | LOS ANGELES TOWER N 133.9 239.3 S 120.95 379.1 | GND CON N 121.65 327.0 S 121.75 327.0 W 121.4 327.0 | CLNC DEL 120.35 327.0 | CPDLC |
|---|--|--|--|---|---------------------------------|-------|



SW-3, 15 AUG 2019 to 12 SEP 2019

SW-3, 15 AUG 2019 to 12 SEP 2019

| | | | |
|--|--------|--|--------------------|
| ELEV 128 | | D TDZE 116 | |
| VGSi and RNAV glidepath not coincident (VGSi Angle 3.00/TCH 69). | | | |
| <p>OTTES</p> <p>3600</p> <p>GP 3.00° TCH 53</p> | | <p>GUPPI</p> <p>1800</p> <p>3000</p> <p>ZIMLO</p> <p>tr 042°</p> <p>AMTRA</p> <p>*0.9 NM to RWY 6R</p> <p>*LNAV only</p> | |
| 6 NM | | 4.2 NM | |
| 0.9 NM | | 0.9 NM | |
| CATEGORY | A | B | C |
| LPV DA# | | 316/24 | 200 (200-½) |
| LNAV/VNAV DA | | 398/24 | 282 (300-½) |
| LNAV MDA | 480/24 | 364 (400-½) | 480/35 364 (400-⅝) |
| TDZ/CL Rwws 6R, 7L, 24R, and 25L HIRL all Rwws | | | |