


WAAS CH 82507 W06A	APP CRS 071°	Rwy Idg TDZE 119 Apt Elev 128	8566
--	------------------------	---	-------------

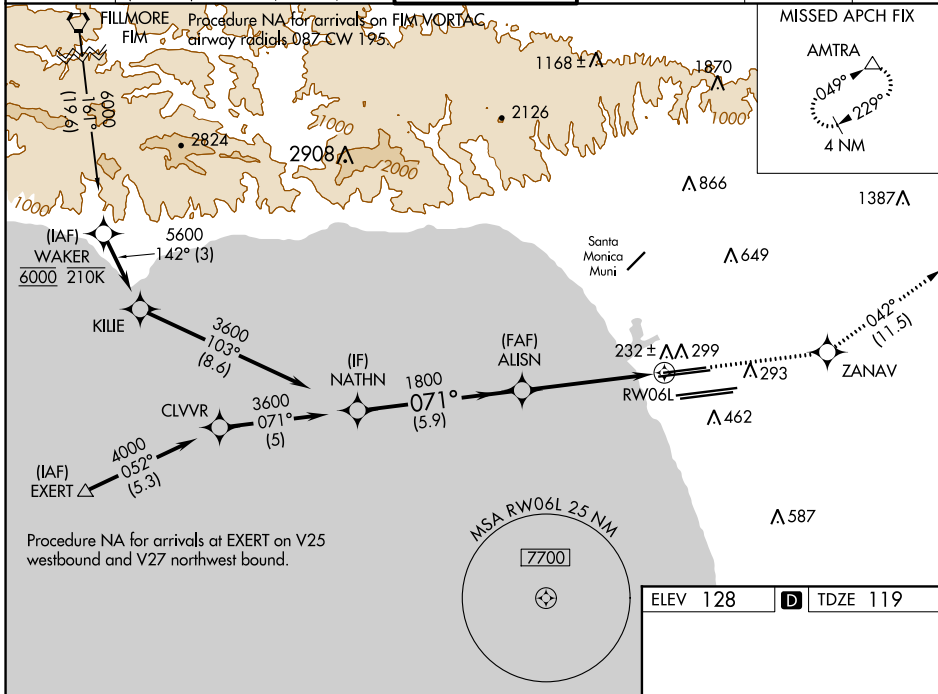
RNAV (GPS) Y RWY 6L

LOS ANGELES INTL (LAX)

▽ For uncompensated Baro-VNAV systems, LNAV/VNAV NA below 5°C (41°F) or above 54°C (130°F). DME/DME RNP-0.3 NA. LNAV procedure NA during simultaneous operations. Use of FD or AP providing RNAV track guidance required during simultaneous operations. Simultaneous approach authorized.

MALSR
 MISSED APPROACH: Climb to 3000 direct ZANAV and track 042° to AMTRA and hold.



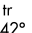
D-ATIS ARR 133.8 DEP 135.65	SOCAL APP CON 124.3 363.2 124.9 269.0 (APCH FM WEST) (090°-224°) 124.5 235.975 128.5 360.7 (223°-044°) (043°-089°)	LOS ANGELES TOWER N 133.9 239.3 S 120.95 379.1	GND CON N 121.65 327.0 S 121.75 327.0 W 121.4 327.0	CLNC DEL 120.35 327.0	CPDLC
---	--	--	---	---	-------



SW-3, 15 AUG 2019 to 12 SEP 2019

SW-3, 15 AUG 2019 to 12 SEP 2019

VGSI and RNAV glidepath not coincident (VGSI Angle 3.00/TCH 77).

	3000	ZANAV	fr 042°	AMTRA
				
		* LNAV only		
		* 1 NM to RW06L		
		RW06L		
		5.9 NM	4.1 NM	1 NM
CATEGORY	A	B	C	D
LPV DA		369/24	250 (300-½)	
LNAV/VNAV DA		411/24	292 (300-½)	
LNAV MDA	500/24	381 (400-½)	500/35	381 (400-¾)

