

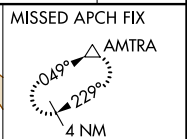
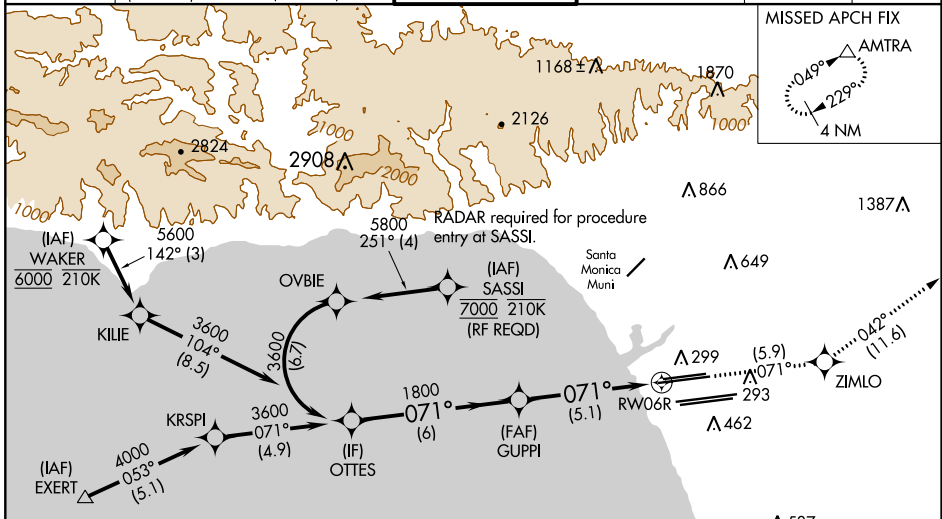
APP CRS 071°	Rwy Idg TDZE Apt Elev	9748 116 128
------------------------	-----------------------------	---

RNAV (RNP) Z RWY 6R

LOS ANGELES INTL (LAX)

<p>For uncompensated Baro-VNAV systems, procedure NA below 5°C (41°F) or above 54°C (130°F). GPS required. Simultaneous approach authorized. For inop ALS, increase RNP 0.30 all Cats visibility to RVR 6000.</p>	<p>MALSR</p>	<p>MISSED APPROACH: Climb to 3000 on track 071° to ZIMLO and on track 042° to AMTRA and hold.</p>

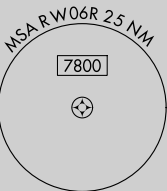
D-ATIS ARR 133.8 DEP 135.65	<p>SOCL APP CON</p> <p>124.3 363.2 (APCH FM WEST) 124.5 235.975 (225°-044°)</p>	<p>124.9 269.0 (090°-224°) 128.5 360.7 (045°-089°)</p>	<p>LOS ANGELES TOWER N 133.9 239.3 S 120.95 379.1</p>	<p>GND CON N 121.65 327.0 S 121.75 327.0 W 121.4 327.0</p>	<p>CLNC DEL 120.35 327.0</p>	CPDLC
---	---	--	---	---	--	-------



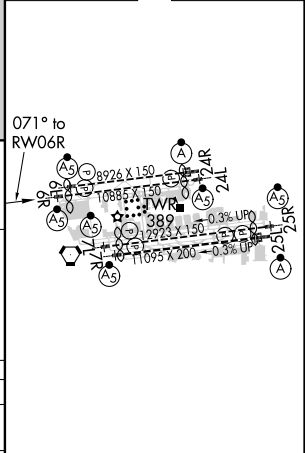
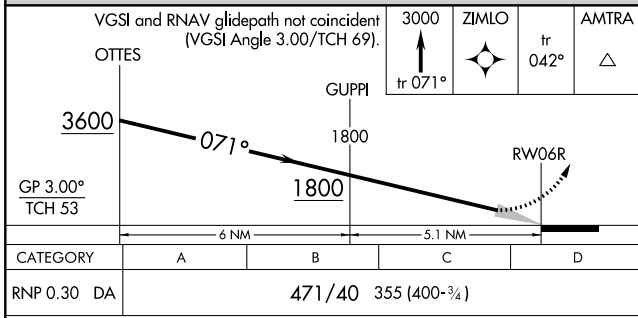
SW-3, 15 AUG 2019 to 12 SEP 2019

SW-3, 15 AUG 2019 to 12 SEP 2019

Procedure NA for arrivals at EXERT on V25 westbound and V27 northwest bound.



ELEV 128	D TDZE 116
----------	-------------------



CATEGORY	A	B	C	D
RNP 0.30 DA		471/40	355 (400-¾)	

AUTHORIZATION REQUIRED

TDZ/CL Rwy 6R, 7L, 24R, and 25L
HIRL all Rwy's