

| | |
|------------------------|--|
| APP CRS 251° | Rwy Idg 11134 TDZE 104 Apt Elev 128 |
|------------------------|--|

RNAV (RNP) Z RWY 25R

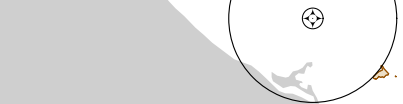
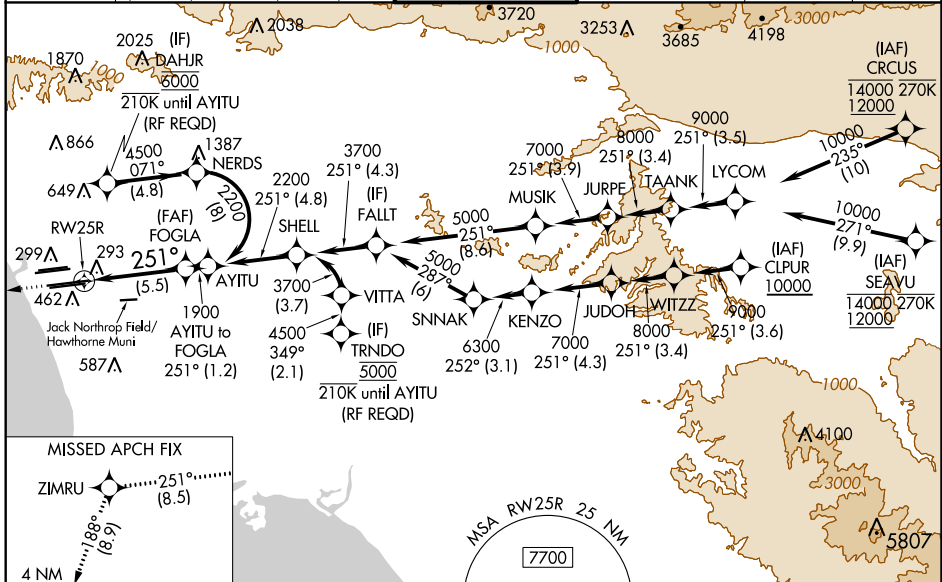
LOS ANGELES INTL (LAX)

For uncompensated Baro-VNAV systems, procedure NA below 5°C (41°F) or above 54°C (130°F). Simultaneous approach authorized. Simultaneous approach authorized with HHR. GPS required. For inop ALS, increase RNP 0.11 all Cats visibility to RVR 6000.

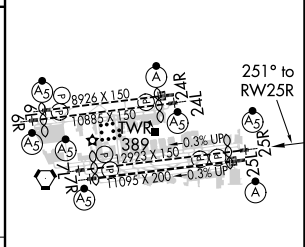
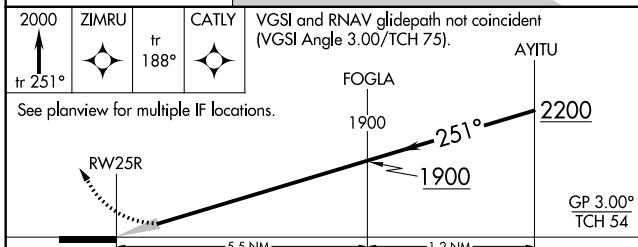
MALSR

MISSED APPROACH: Climb to 2000 on track 251° to ZIMRU and track 188° to CATLY and hold.

| | | | | | |
|---|--|--|---|---|-------|
| D-ATIS ARR 133.8 DEP 135.65 | SOCAL APP CON (APCH FM WEST) 124.3 363.2 124.5 235.975 (225°-044°) | LOS ANGELES TOWER N 133.9 239.3 S 120.95 379.1 (090°-224°) (045°-089°) | GND CON N 121.65 327.0 S 121.75 327.0 W 121.4 327.0 | CLNC DEL 120.35 327.0 | CPDLC |
|---|--|--|---|---|-------|



| | |
|----------|-------------------|
| ELEV 128 | D TDZE 104 |
|----------|-------------------|



| | | | | |
|-------------|---|--------|-------------|---|
| CATEGORY | A | B | C | D |
| RNP 0.11 DA | | 453/40 | 349 (400-¾) | |
| RNP 0.30 DA | | 544/50 | 440 (500-1) | |

AUTHORIZATION REQUIRED

TDZ/CL Rwy's 6R, 7L, 24R, and 25L
HIRL all Rwy's

SW-3, 15 AUG 2019 to 12 SEP 2019

SW-3, 15 AUG 2019 to 12 SEP 2019