

OSHNN EIGHT DEPARTURE (RNAV)

AL-237 (FAA)

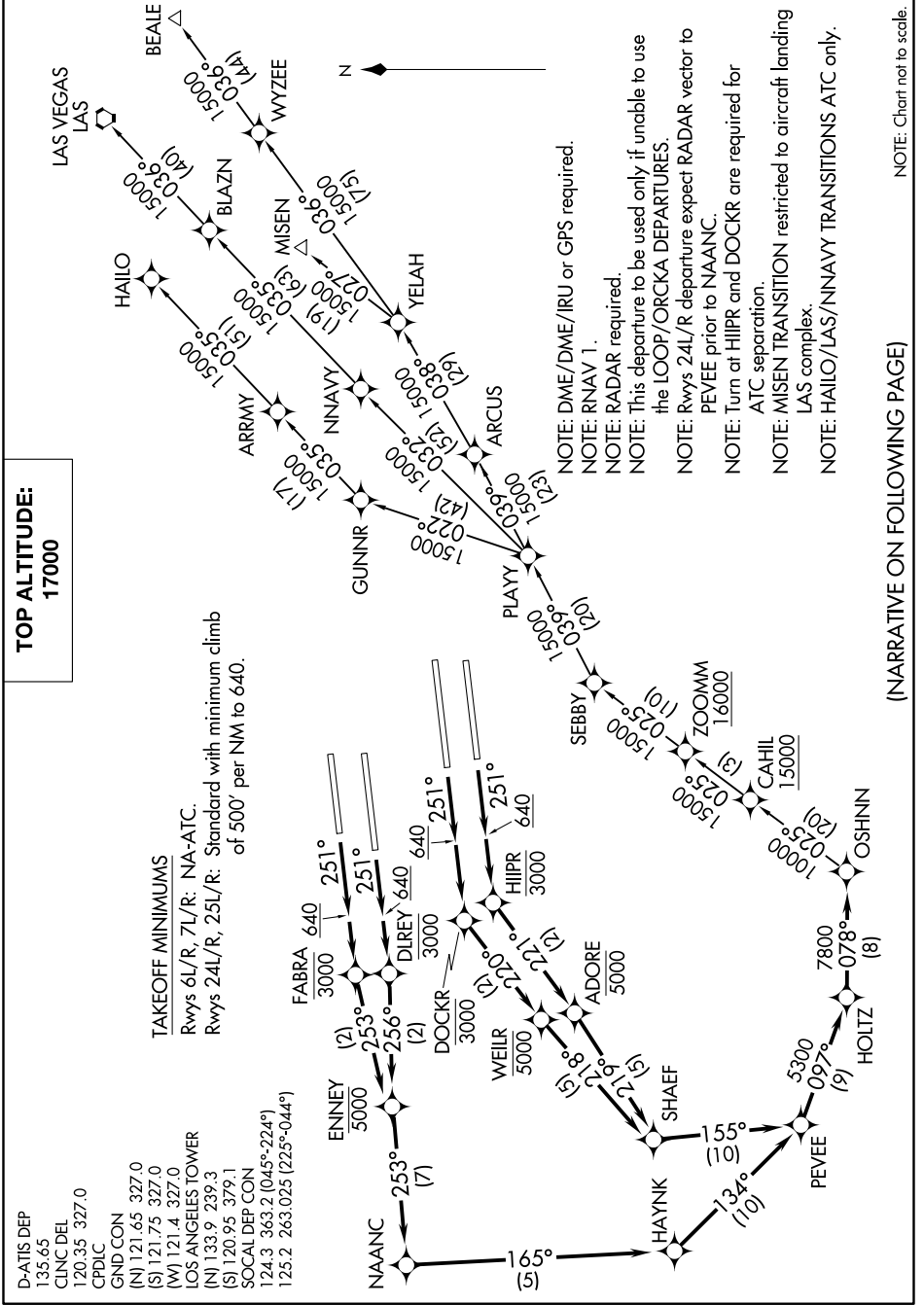
LOS ANGELES INTL (LAX)
LOS ANGELES, CALIFORNIA

SW-3, 15 AUG 2019 to 12 SEP 2019

**TOP ALTITUDE:
17000**

TAKEOFF MINIMUMS
Rwys 6L/R, 7L/R: NA-ATC.
Rwys 24L/R, 25L/R: Standard with minimum climb
of 500' per NM to 640.

D-ATIS DEP 135.65
CLNC DEL 120.35 327.0
CPDLC
GND CON (N) 121.65 327.0
(S) 121.75 327.0
(W) 121.4 327.0
LOS ANGELES TOWER
(N) 133.9 329.3
(S) 120.95 379.1
SOCAL DEP CON
124.3 363.2 (045°-224°)
125.2 263.025 (225°-044°)



NOTE: DME/DME/IRU or GPS required.
NOTE: RNAV 1.
NOTE: RADAR required.
NOTE: This departure to be used only if unable to use
the LOOP/ORCKA DEPARTURES.
NOTE: Rwys 24L/R departure expect RADAR vector to
PEVEE prior to NAAANC.
NOTE: Turn at HJPR and DOCKR are required for
ATC separation.
NOTE: MISEN TRANSITION restricted to aircraft landing
LAS complex.
NOTE: HAILO/LAS/NNNAVY TRANSITIONS ATC only.

(NARRATIVE ON FOLLOWING PAGE)

NOTE: Chart not to scale.

OSHNN EIGHT DEPARTURE (RNAV)

SW-3, 15 AUG 2019 to 12 SEP 2019