

SW-3, 15 AUG 2019 to 12 SEP 2019

**TOP ALTITUDE:
FL230**

TAKEOFF MINIMUMS

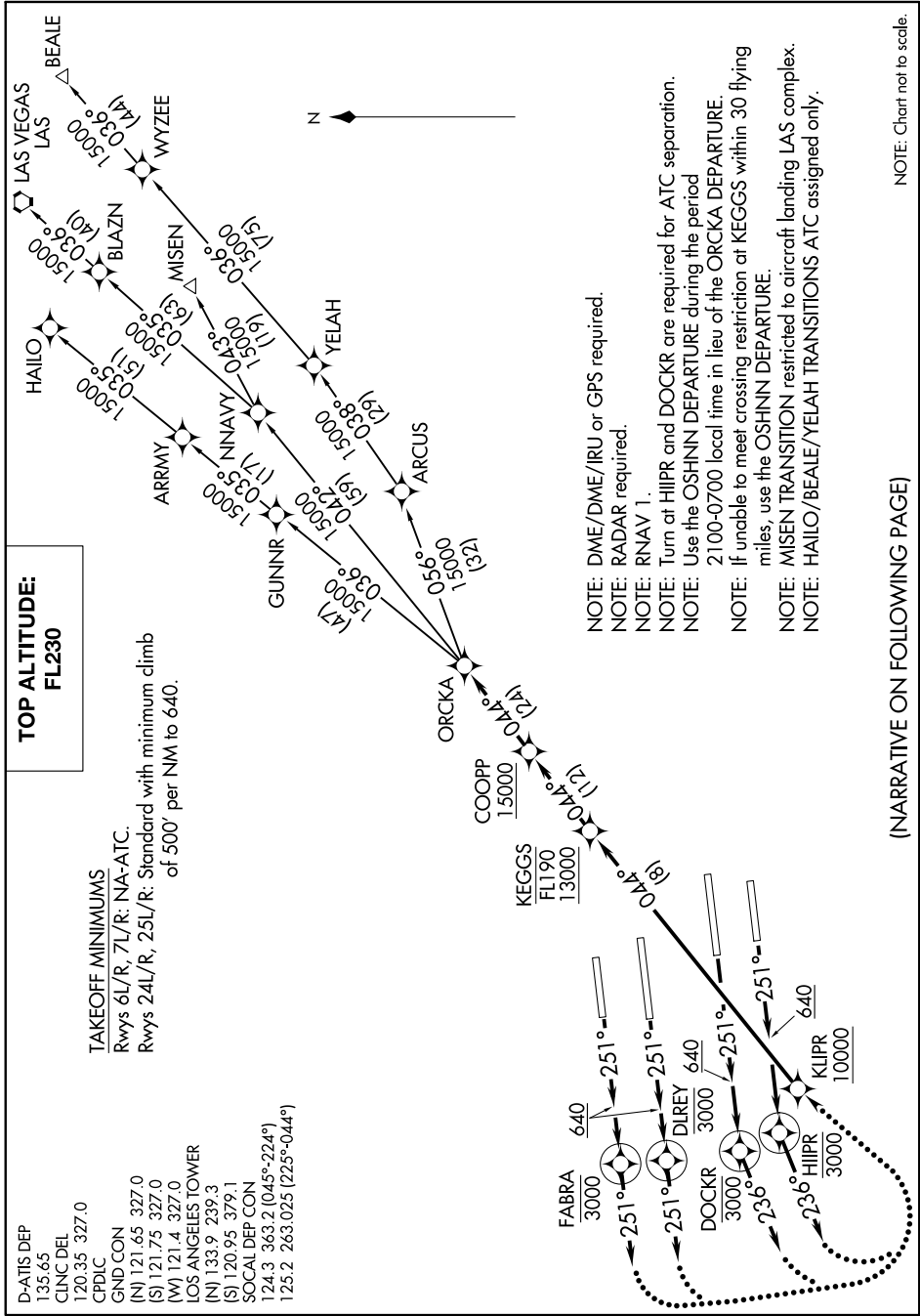
Rwys 6L/R, 7L/R: NA-AIC.

Rwys 24L/R, 25L/R: Standard with minimum climb of 500' per NM to 640.

D-ATIS DEP
135.65
CUNCDL
120.35 327.0
CPDLC

GND CON
(N) 121.65 327.0
(S) 121.75 327.0
(W) 121.4 327.0
LOS ANGELES TOWER
(N) 133.9 239.3
(S) 120.95 379.1

SOCAL DEP CON
124.3 363.2 (045°-224°)
125.2 263.025 (225°-044°)



NOTE: DME/DME/IRU or GPS required.

NOTE: RADAR required.

NOTE: RNAV 1.

NOTE: Turn at HIIPR and DOCKR are required for ATC separation.

NOTE: Use the OSHNN DEPARTURE during the period 2100-0700 local time in lieu of the ORCKA DEPARTURE.

NOTE: If unable to meet crossing restriction at KEGGS within 30 flying miles, use the OSHNN DEPARTURE.

NOTE: MISEN TRANSITION restricted to aircraft landing LAS complex.

NOTE: HAILLO/BEALE/YELAH TRANSITIONS ATC assigned only.

(NARRATIVE ON FOLLOWING PAGE)

NOTE: Chart not to scale.

SW-3, 15 AUG 2019 to 12 SEP 2019