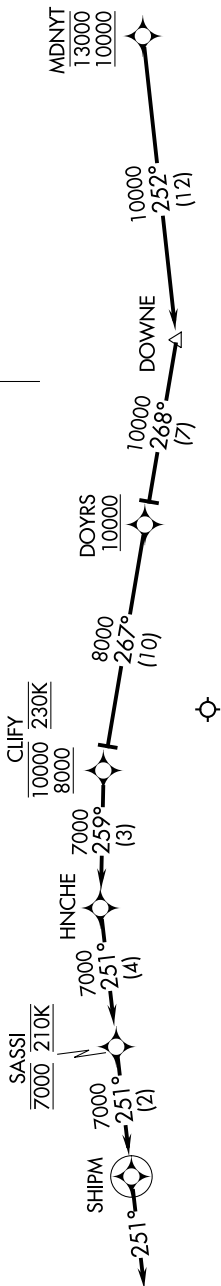


# MDNYT TWO ARRIVAL (RNAV) Arrival Routes

SW-3, 15 AUG 2019 to 12 SEP 2019

SOCAL APP CON  
124.05 353.775  
D-ATIS ARR  
133.8  
LOS ANGELES TOWER  
(N) 133.9 239.3  
(S) 120.95 379.1



NOTE: RADAR required.

NOTE: RNAV 1.

NOTE: DME/DME/IRU or GPS required.

NOTE: This arrival for use only when noise abatement procedures are in effect.

NOTE: Expect runway 6R unless otherwise assigned.

NOTE: Expect local area altimeter reaching FL230.

NOTE: Chart not to scale.

## ARRIVAL ROUTE DESCRIPTION

**LANDING RUNWAYS 6L/R:** From MDNYT on track 252° to DOWNE, then on track 268° to cross DOYRS at or above 10000, then on track 267° to cross CLIFY between 8000 and 10000 and at 230K, then on track 259° to HNCHE, then on track 251° to cross SASSI at 7000 and at 210K, then on track 251° to SHIPM, then on track 251°. Expect RADAR vectors to ILS or RNAV (RNP) RWY 6R final approach course.

**LOST COMMUNICATIONS:** In the event of lost communication proceed on the RNAV (RNP) RWY 6R or ILS or LOC RWY 6R approach.

# MDNYT TWO ARRIVAL (RNAV) Arrival Routes

SW-3, 15 AUG 2019 to 12 SEP 2019