

# LAXX ONE DEPARTURE

AL-237 (FAA)

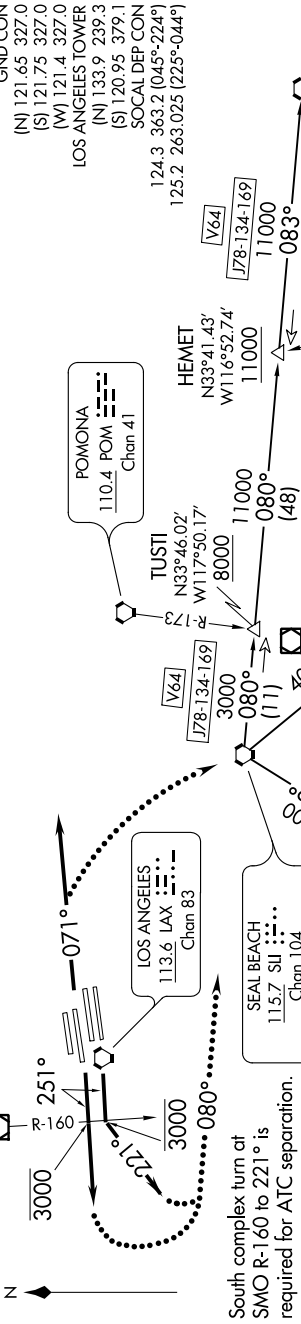
LOS ANGELES INTL (LAX)  
LOS ANGELES, CALIFORNIA

SW-3, 15 AUG 2019 to 12 SEP 2019

**TOP ALTITUDE:  
ASSIGNED BY ATC**

**TAKEOFF MINIMUMS**  
Rwy 6L/R, 7L/R, 24L/R, 25L/R: Standard.

**NOTE:** This departure is for turbojet aircraft only.  
**NOTE:** RADAR and DME required.



(NARRATIVE ON FOLLOWING PAGE)

SW-3, 15 AUG 2019 to 12 SEP 2019

NOTE: Chart not to scale.

**FICKY**  
N31°33.46'  
W121°23.51'  
H-4

Expect clearance to FICKY then on assigned route.