

| | | |
|--|------------------------|---|
| LOC/DME I-MKZ 109.9 Chan 36 | APP CRS 071° | Rwy Idg 7R 11095 11259 7L TDZE 128 128 Apt Elev 128 128 |
|--|------------------------|---|

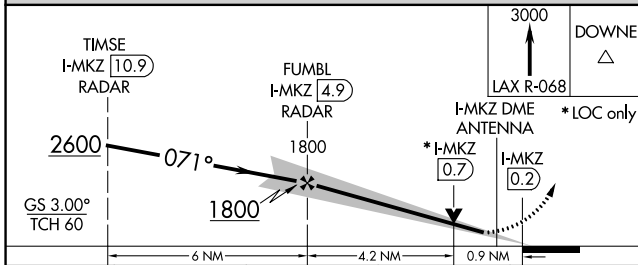
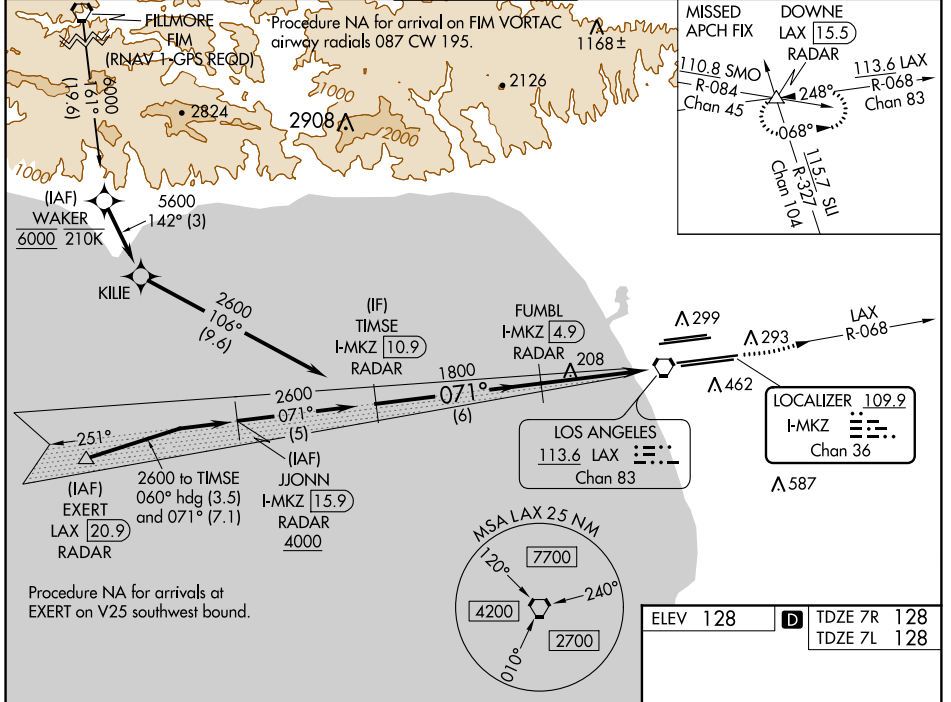
ILS or LOC RWY 7R

LOS ANGELES INTL (LAX)

Simultaneous approach authorized. DME or RADAR required. Inop table does not apply to Sidestep Rwy 7L Cats A and B. # RVR 1800 authorized with use of FD or AP or HUD to DA.

| | | |
|--------------|--------------|--|
| MALSR Rwy 7R | MALSR Rwy 7L | MISSED APPROACH: Climb to 3000 on LAX VORTAC R-068 to DOWNNE INT/ LAX 15.5 DME/RADAR and hold. |
|--------------|--------------|--|

| | | | | | | |
|---|--|--|--|---|---|-------|
| D-ATIS ARR 133.8 DEP 135.65 | SOCAL APP CON 124.3 363.2 (APCH FM WEST) 124.5 235.975 (225°-044°) | 124.9 269.0 (090°-224°) 128.5 360.7 (045°-089°) | LOS ANGELES TOWER N 133.9 239.3 S 120.95 379.1 | GND CON N 121.65 327.0 S 121.75 327.0 W 121.4 327.0 | CINC DEL 120.35 327.0 | CPDLC |
|---|--|--|--|---|---|-------|



| | |
|----------|-------------|
| ELEV 128 | TDZE 7R 128 |
| | TDZE 7L 128 |

| | | | | |
|-------------|--------------------|---|--------------------|------------------------|
| CATEGORY | A | B | C | D |
| S-ILS 7R# | 328/24 200 (200-½) | | | |
| S-LOC 7R | 460/24 332 (400-½) | | 460/26 332 (400-½) | |
| SIDESTEP 7L | 520/55 392 (400-1) | | | 520-1½ 392 (400-1½) |

*LOC only

071° 5.1 NM from FAF

TDZ/CL Rws 6R, 7L, 24R, and 25L
HIRL all Rws

FAF to MAP 5.1 NM

| | | | | | |
|---------|------|------|------|------|------|
| Knots | 60 | 90 | 120 | 150 | 180 |
| Min:Sec | 5:06 | 3:24 | 2:33 | 2:02 | 1:42 |

SW-3, 15 AUG 2019 to 12 SEP 2019

SW-3, 15 AUG 2019 to 12 SEP 2019