

LOC/DME I-LAX	APP CRS	Rwy Idg	25L	25R
109.9	251°	Elev	11095	11134
Chan 36		TDZE	104	104
		Apt Elev	128	128

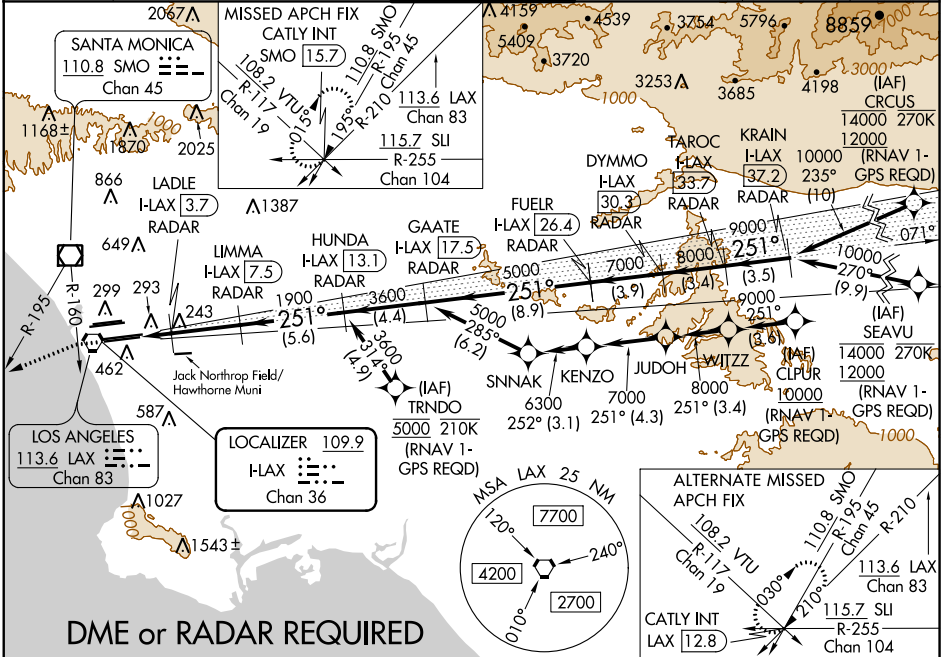
ILS or LOC RWY 25L

LOS ANGELES INTL (LAX)

▼ DME or RADAR required. Simultaneous approach authorized. Simultaneous approach authorized with HHR. LOC procedure NA during simultaneous operations with HHR LOC RWY 25.

ALSIF-2 Rwy 25L	MALSR Rwy 25R	MISSED APPROACH: Climb to 2000 on heading 251° until crossing the SMO R-160, then left turn on heading 236° and on the SMO R-195 to CATLY INT/SMO 15.7 DME and hold.
-----------------	---------------	--

D-ATIS	SOCAL APP CON	LOS ANGELES TOWER	GND CON	CLNC DEL	CPDLC
ARR 133.8	124.3 363.2 (APCH FM WEST)	N 133.9 239.3	N 121.65 327.0	120.35	
DEP 135.65	124.5 235.975 (225°-044°)	S 128.5 360.7 (045°-089°)	S 121.75 327.0	327.0	
			W 121.4 327.0		



SW-3, 15 AUG 2019 to 12 SEP 2019

SW-3, 15 AUG 2019 to 12 SEP 2019

2000 hdg 251°	SMO R-160	SMO R-195	CATLY INT	VGSIs and ILS glidepath not coincident (VGSi Angle 3.00/TCH 70).				
	LADLE I-LAX 3.7 RADAR	LIMMA I-LAX 7.5 RADAR	HUNDA I-LAX 13.1 RADAR	GAATE I-LAX 17.5 RADAR	FUELR I-LAX 26.4 RADAR	DYMMO I-LAX 30.3 RADAR	TAROC I-LAX 33.7 RADAR	KRAIN I-LAX 37.2 RADAR
*LOC only	I-LAX 3.2							
	1.2	0.6	3.7 NM	5.6 NM	4.4 NM	8.9 NM	3.9 NM	3.4 NM
CATEGORY	A		B		C		D	
S-ILS 25L	304/18 200 (200-½)							
S-LOC 25L	540/24		436 (500-½)		540/40		436 (500-¾)	
SIDESTEP 25R	540/55		436 (500-1)		540-1½		436 (500-1½)	

ELEV 128 **D** TDZE 25L 104 TDZE 25R 104

ALTERNATE MISSED APCH FIX

108.2 VTU Chan 19

110.8 SMO Chan 45

113.6 LAX Chan 83

115.7 SU R-255 Chan 104

CATLY INT LAX 12.8

251° 5.5 NM from FAF

ILS or LOC RWY 25L