

LOC/DME I-LAX <b>109.9</b> Chan 36	APP CRS <b>251°</b>	Rwy ldg <b>11095</b> TDZE <b>104</b> Apt Elev <b>128</b>
--	------------------------	--

# ILS RWY 25L (CAT II & III)

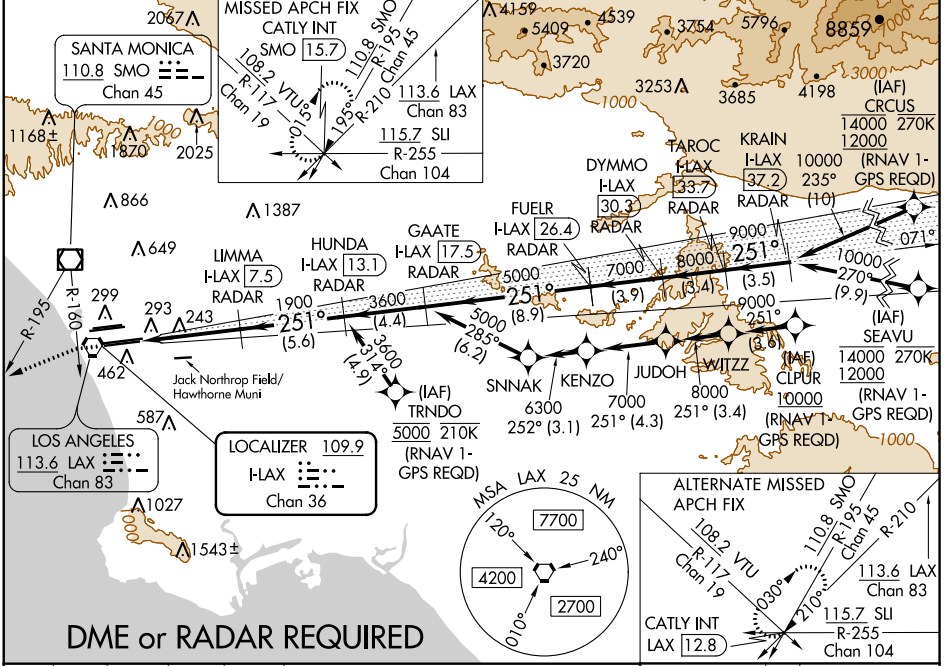
LOS ANGELES INTL (LAX)

**▽** DME or RADAR required.  
Simultaneous approach authorized.  
Simultaneous approach authorized with HHR.



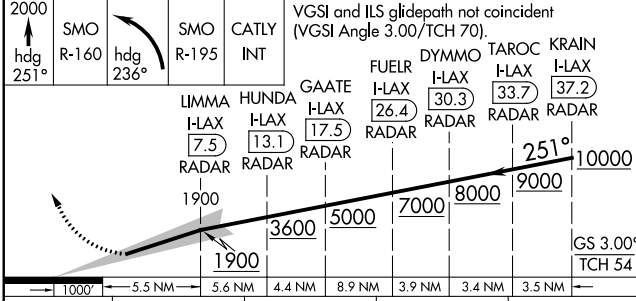
**MISSED APPROACH:** Climb to 2000 on heading 251° until crossing the SMO R-160 then left turn on heading 236° and on the SMO R-195 to CATLY INT/SMO 15.7 DME and hold.

D-ATIS ARR <b>133.8</b> DEP <b>135.65</b>	SOCAL APP CON <b>124.3 363.2</b> (APCH FM WEST) <b>124.5 235.975</b> (225°-044°)	<b>124.9 269.0</b> (090°-224°) <b>128.5 360.7</b> (045°-089°)	LOS ANGELES TOWER <b>N 133.9 239.3</b> <b>S 120.95 379.1</b>	GND CON <b>N 121.65 327.0</b> <b>S 121.75 327.0</b> <b>W 121.4 327.0</b>	CLNC DEL <b>120.35</b> <b>235°</b> <b>327.0</b>	CPDLC
---	--	--	--	---	--	-------

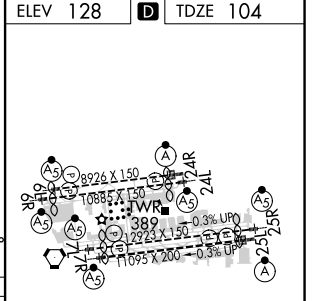


SW-3, 15 AUG 2019 to 12 SEP 2019

SW-3, 15 AUG 2019 to 12 SEP 2019



2000 hdg 251°	SMO R-160 hdg 236°	SMO R-195	CATLY INT	VGSI and ILS glidepath not coincident (VGSI Angle 3.00/TCH 70).	TAROC I-LAX 33.7 RADAR	KRAIN I-LAX 37.2 RADAR
LIMMA I-LAX 7.5 RADAR	HUNDA I-LAX 13.1 RADAR	GAATE I-LAX 17.5 RADAR	FUELR I-LAX 26.4 RADAR	DYMMO I-LAX 30.3 RADAR	10000	9000
1900	3600	5000	7000	8000	GS 3.00° TCH 54	
1000'	5.5 NM	5.6 NM	4.4 NM	8.9 NM	3.9 NM	3.4 NM
S-ILS 25L	CAT II RA 107/12			100 DA	204	
S-ILS 25L	CAT III RVR 06					



## CATEGORY II & III ILS - SPECIAL AIRCREW & AIRCRAFT CERTIFICATION REQUIRED

TDZ/CL Rwyrs 6R, 7L, 24R, and 25L  
HIRL all Rwyrs