

# DOTSS TWO DEPARTURE (RNAV)

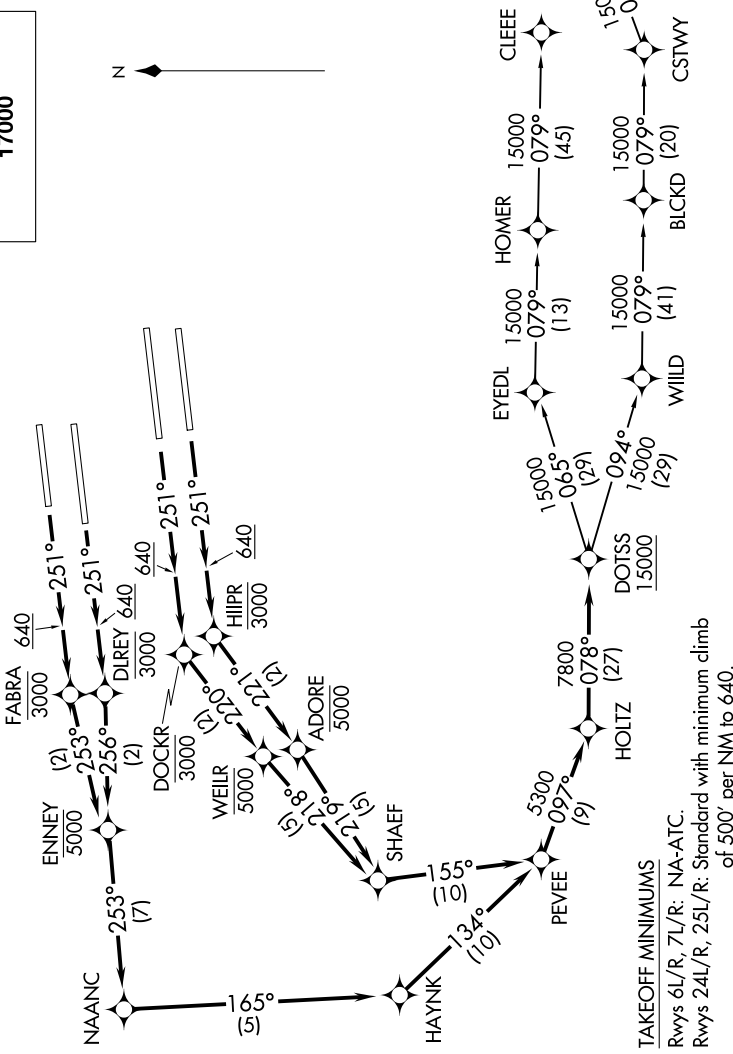
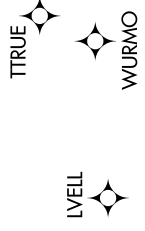
AL-237 (FAA)

LOS ANGELES INTL (LAX)  
LOS ANGELES, CALIFORNIA

SW-3, 15 AUG 2019 to 12 SEP 2019

**TOP ALTITUDE:  
17000**

D-ATIS DEP 135.65  
 CLNC DEL 120.35 327.0  
 CPDLC  
 GND CON (N) 121.65 327.0  
 (S) 121.75 327.0  
 (W) 121.4 327.0  
 LOS ANGELES TOWER  
 (N) 133.9 239.3  
 (S) 120.95 379.1  
 SOCIAL DEP CON  
 124.3 363.2 (045°-224°)  
 125.2 263.025 (225°-044°)



**TAKEOFF MINIMUMS**  
 Rwy 6L/R, 7L/R: NA-ATC.  
 Rwy 24L/R, 25L/R: Standard with minimum climb of 500' per NM to 640.

NOTE: DME/DME/IRU or GPS required.  
 NOTE: RADAR required.  
 NOTE: RNAV 1.  
 NOTE: Turbojet aircraft only.  
 NOTE: Turn at HIIPR and DOCKR are required for ATC separation.

(NARRATIVE ON FOLLOWING PAGE)

NOTE: Chart not to scale.

SW-3, 15 AUG 2019 to 12 SEP 2019

# DOTSS TWO DEPARTURE (RNAV)