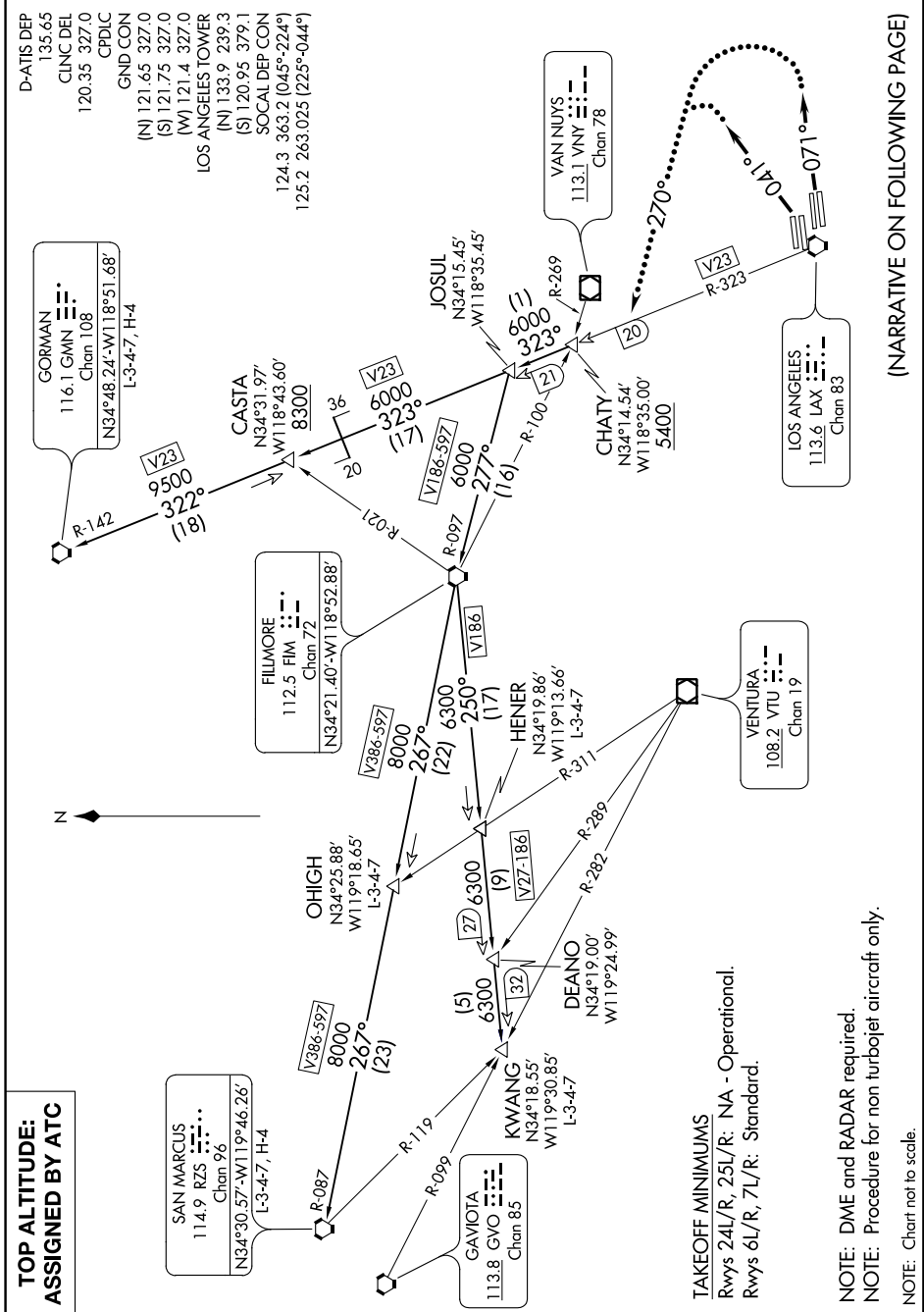


CHATY FIVE DEPARTURE

AL-237 (FAA)

LOS ANGELES INTL (LAX)
LOS ANGELES, CALIFORNIA

SW-3, 15 AUG 2019 to 12 SEP 2019



**TOP ALTITUDE:
ASSIGNED BY ATC**

SAN MARCUS
114.9 RZS
N34°30.57'-W119°46.26'
Chan 96
L-3-4-7, H-4

V386-597
8000
267°
(23)

OHIG
N34°25.88'
W119°18.65'
L-3-4-7

V386-597
8000
267°
(22)

FILLMORE
112.5 FIM
N34°21.40'-W118°52.88'
Chan 72

V23
9500
322°
(18)

CASTA
N34°31.97'
W118°43.60'
8300
(16)

V23
6000
323°
(17)

JOSUL
N34°15.45'
W118°35.45'

GAVIOTA
113.8 GVO
N34°18.55'
W119°30.85'
L-3-4-7
Chan 85

V27-186
6300
(9)

DEANO
N34°19.00'
W119°24.99'

HENER
N34°19.86'
W119°13.66'
L-3-4-7

V186-597
6000
277°
(16)

CHATY
N34°14.54'
W118°35.00'
5400

VAN NUYS
113.1 VNY
Chan 78

TAKEOFF MINIMUMS

Rwys 24L/R, 25L/R: NA - Operational.
Rwys 6L/R, 7L/R: Standard.

NOTE: DME and RADAR required.
NOTE: Procedure for non turbojet aircraft only.
NOTE: Chart not to scale.

(NARRATIVE ON FOLLOWING PAGE)

CHATY FIVE DEPARTURE

LOS ANGELES, CALIFORNIA
LOS ANGELES INTL (LAX)

SW-3, 15 AUG 2019 to 12 SEP 2019