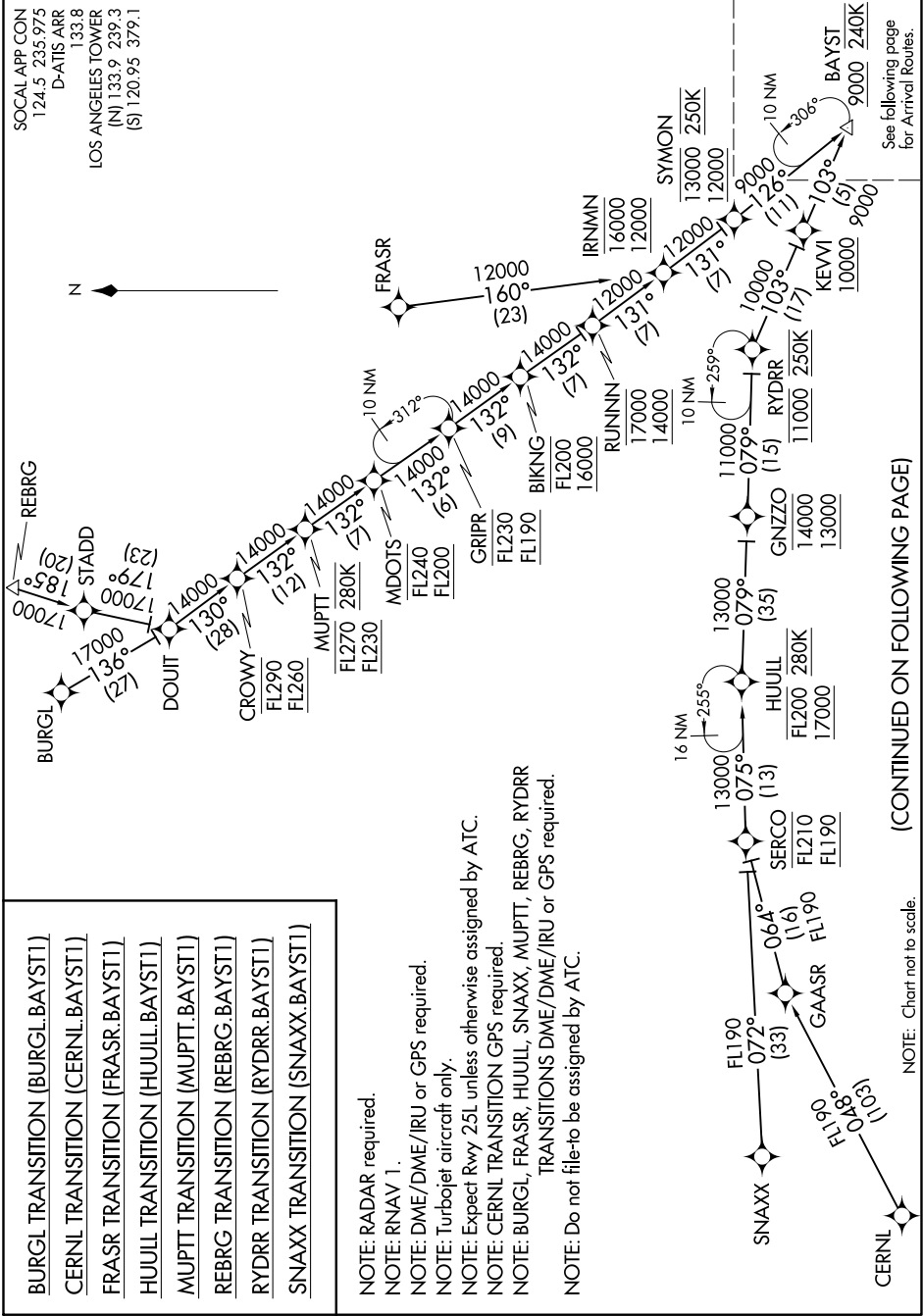


BAYST ONE ARRIVAL (RNAV) Transition Routes

AL-237 (FAA)

LOS ANGELES INTL (LAX)
LOS ANGELES, CALIFORNIA

SW-3, 15 AUG 2019 to 12 SEP 2019



- BURGL TRANSITION (BURGL.BAYST1)
- CERNL TRANSITION (CERNL.BAYST1)
- FRASR TRANSITION (FRASR.BAYST1)
- HUJUL TRANSITION (HUJUL.BAYST1)
- MUPTT TRANSITION (MUPTT.BAYST1)
- REBRG TRANSITION (REBRG.BAYST1)
- RYDRR TRANSITION (RYDRR.BAYST1)
- SNAXX TRANSITION (SNAXX.BAYST1)

NOTE: RADAR required.
 NOTE: RNAV 1.
 NOTE: DME/DME/IRU or GPS required.
 NOTE: Turbojet aircraft only.
 NOTE: Expect Rwy 25L unless otherwise assigned by ATC.
 NOTE: CERNL TRANSITION GPS required.
 NOTE: BURGL, FRASR, HUJUL, SNAXX, MUPTT, REBRG, RYDRR TRANSITIONS DME/DME/IRU or GPS required.
 NOTE: Do not file-to be assigned by ATC.

(CONTINUED ON FOLLOWING PAGE)

SW-3, 15 AUG 2019 to 12 SEP 2019

NOTE: Chart not to scale.

See following page for Arrival Routes.