

LAKEHURST, NEW JERSEY

# VOR or VOR/DME or TACAN Y RWY 33

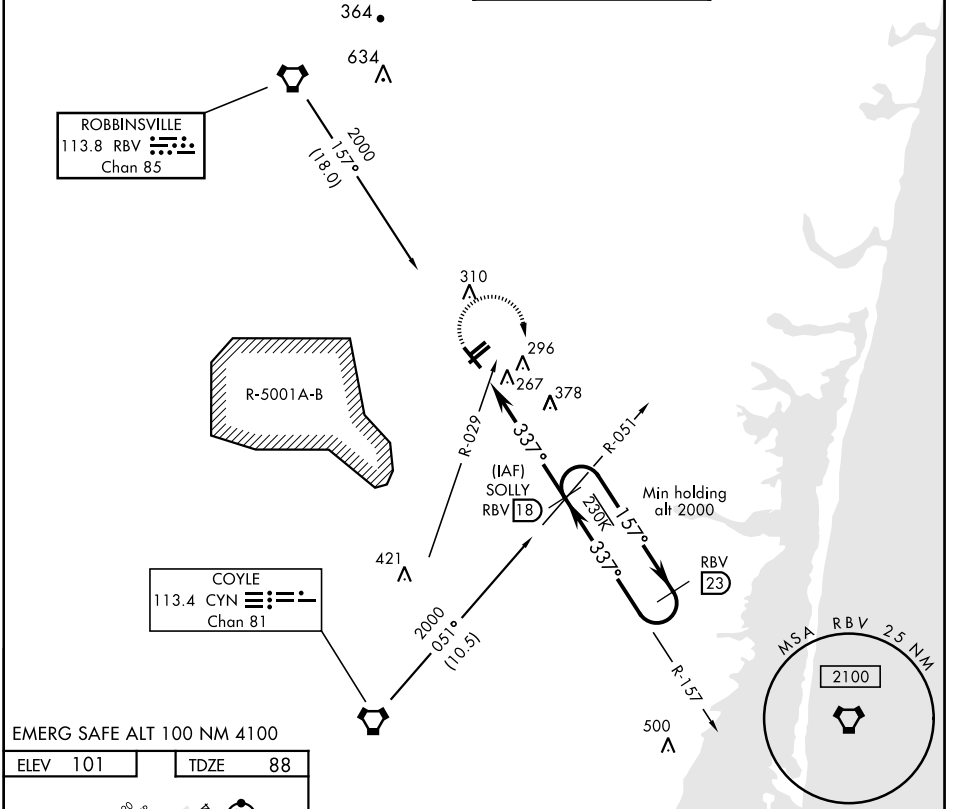
LAKEHURST MAXFIELD FLD,

AL-223 [USN] (JOINT BASE MC GUIRE DIX LAKEHURST) (KNEL)

VORTAC RBV <b>113.8</b> Chan <b>85</b>	APCH CRS <b>337°</b>	Rwy Idg TDZE Arprt Elev <b>5002</b> <b>88</b> <b>101</b>
--	-------------------------	---

**▽** MISSED APPROACH: Climbing right turn to 2000, intercept RBV VORTAC R-157 to SOLLY and hold.

ATIS ★ <b>276.525</b>	MC GUIRE APP CON <b>124.15 363.8</b>	LAKEHURST TOWER ★ <b>127.775 360.2</b>	GND CON <b>118.375 307.05</b>
--------------------------	---	---	----------------------------------



NE-2, 15 AUG 2019 to 12 SEP 2019

NE-2, 15 AUG 2019 to 12 SEP 2019

EMERG SAFE ALT 100 NM 4100

ELEV 101	TDZE 88
----------	---------

MIRL Rwy 6L-24R  
HIRL Rwy 6-24  
FAF to MAP 5.1 NM

Knots	60	90	120	150	180
Min:Sec	5:06	3:24	2:33	2:02	1:42

	2000 RBV R-157	SOLLY RBV 18	SOLLY RBV R-157 18 / CYN R-051	RBV R-157 23	2000
VORTAC	TOBME RBV R-157 12.9 / CYN R-029	RBV 13.8	337°	157°	2000
	0.5	5.1 NM	3.12° TCH 51		
CATEGORY	A	B	C	D	
S-33	600-1 512 (500-1)	600-1 512 (500-1)	600-1 512 (500-1)	600-1 512 (500-1)	
CIRCLING	600-1 499 (500-1)	640-1 539 (600-1)	680-1 579 (600-1)	680-2 579 (600-2)	

LAKEHURST, NEW JERSEY  
Amdt 1 12OCT17

40°02'N-74°21'W

LAKEHURST MAXFIELD FLD,

(JOINT BASE MC GUIRE DIX LAKEHURST) (KNEL)

# VOR or VOR/DME or TACAN Y RWY 33