

TACAN RWY 24

LAKEHURST MAXFIELD FLD,
 (JOINT BASE MC GUIRE DIX LAKEHURST) (KNEL)

| | | |
|-----------------------------|-------------------------|---|
| TACAN NEL Chan 55 | APCH CRS 250° | Rwy Idg TDZE Arpt Elev 5002 101 101 |
|-----------------------------|-------------------------|---|

AL-223 [USN]

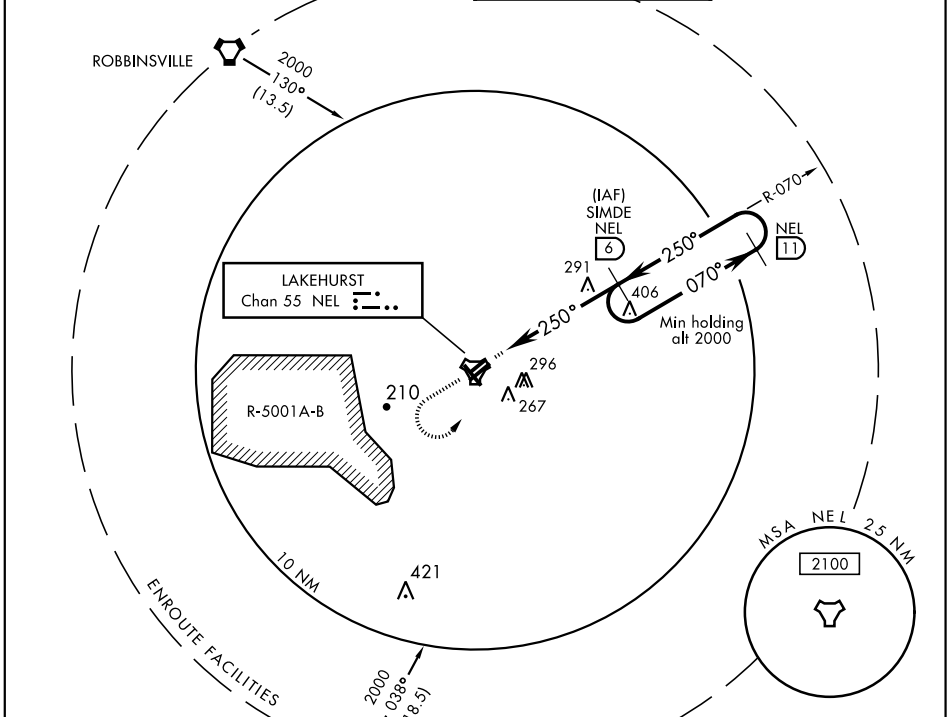
(JOINT BASE MC GUIRE DIX LAKEHURST) (KNEL)

▼ *When ALS inop increase CAT ABCD vis to 1 mile.

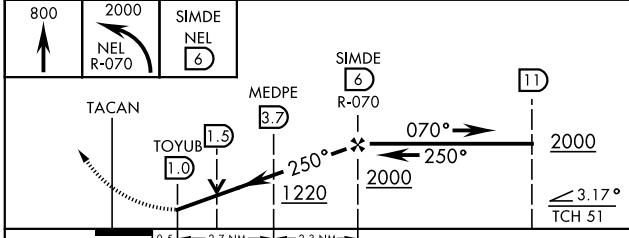


MISSED APPROACH: Climb to 800, then climbing left turn to 2000 to intercept NEL TACAN R-070 to SIMDE and hold.

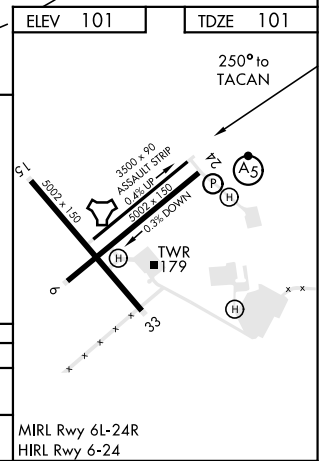
| | | | |
|--------------------------|---|---|----------------------------------|
| ATIS ★ 276.525 | MC GUIRE APP CON 124.15 363.8 | LAKEHURST TOWER ★ 127.775 360.2 | GND CON 118.375 307.05 |
|--------------------------|---|---|----------------------------------|



EMERG SAFE ALT 100 NM 4100



| CATEGORY | A | B | C | D |
|----------|----------------------|----------------------|------------------------|----------------------|
| S-24* | 480-½ 379 (400-½) | 480-¾ 379 (400-¾) | 480-¾ 379 (400-¾) | 480-¾ 379 (400-¾) |
| CIRCLING | 580-1 479 (500-1) | 640-1 539 (600-1) | 680-1½ 579 (600-1½) | 680-2 579 (600-2) |



LAKEHURST, NEW JERSEY
 Amdt 1 12OCT17

40°02'N-74°21'W

LAKEHURST MAXFIELD FLD,
 (JOINT BASE MC GUIRE DIX LAKEHURST) (KNEL)

TACAN RWY 24

NE-2, 15 AUG 2019 to 12 SEP 2019

NE-2, 15 AUG 2019 to 12 SEP 2019