

SHAIN ONE ARRIVAL (RNAV) Transition Routes

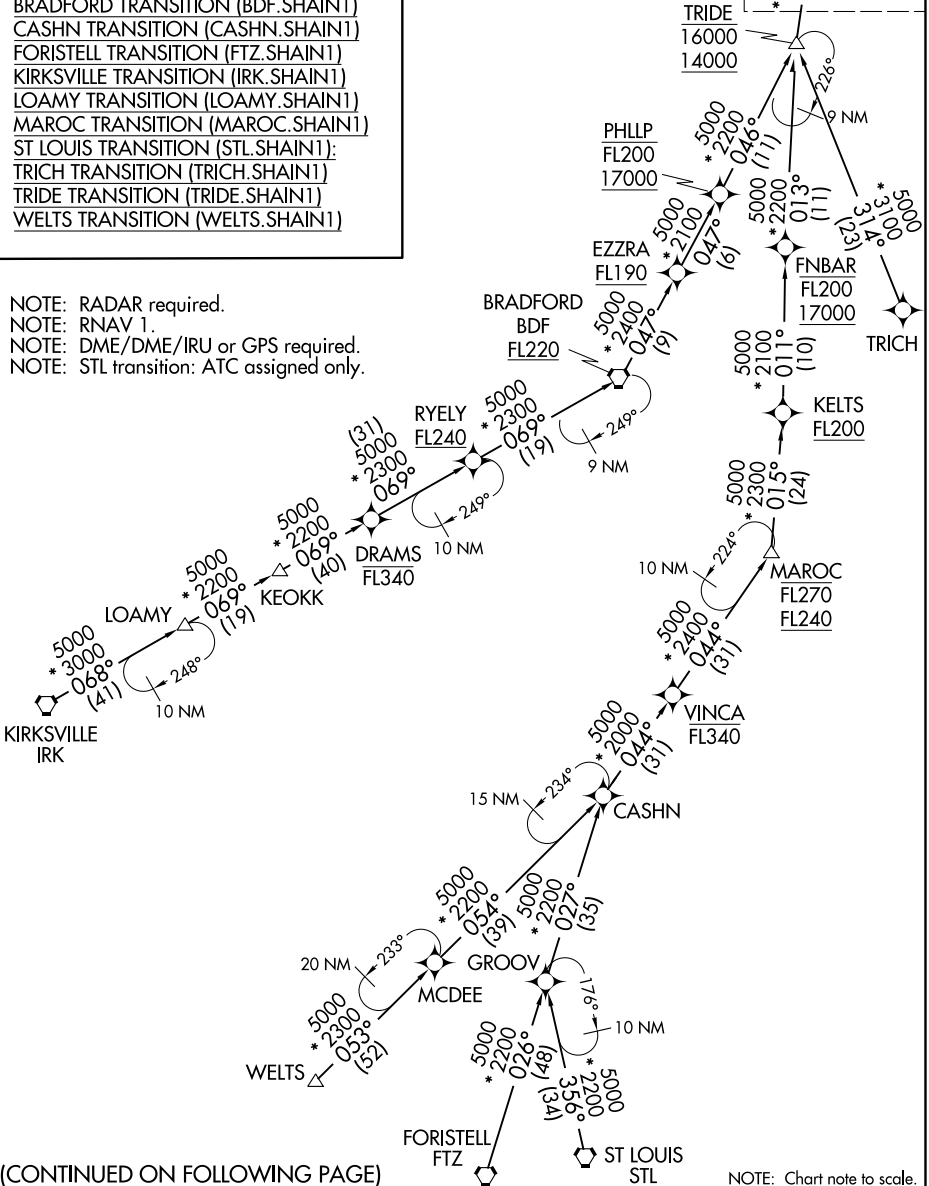
D-ATIS
135.4 282.225
CHICAGO APP CON
119.0 292.125

See following page for
Arrival Routes

SHAIN
12000

- BRADFORD TRANSITION (BDF.SHAIN1)
- CASHN TRANSITION (CASHN.SHAIN1)
- FORISTELL TRANSITION (FTZ.SHAIN1)
- KIRKSVILLE TRANSITION (IRK.SHAIN1)
- LOAMY TRANSITION (LOAMY.SHAIN1)
- MAROC TRANSITION (MAROC.SHAIN1)
- ST LOUIS TRANSITION (STL.SHAIN1):
- TRICH TRANSITION (TRICH.SHAIN1)
- TRIDE TRANSITION (TRIDE.SHAIN1)
- WELTS TRANSITION (WELTS.SHAIN1)

NOTE: RADAR required.
NOTE: RNAV 1.
NOTE: DME/DME/IRU or GPS required.
NOTE: STL transition: ATC assigned only.



EC-3, 15 AUG 2019 to 12 SEP 2019

EC-3, 15 AUG 2019 to 12 SEP 2019

(CONTINUED ON FOLLOWING PAGE)

NOTE: Chart note to scale.

SHAIN ONE ARRIVAL (RNAV) Transition Routes