

WAAS CH 65837 W28D	APP CRS 273°	Rwy Idg TDZE Apt Elev	7500 667 680
--	------------------------	-----------------------------	---

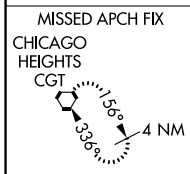
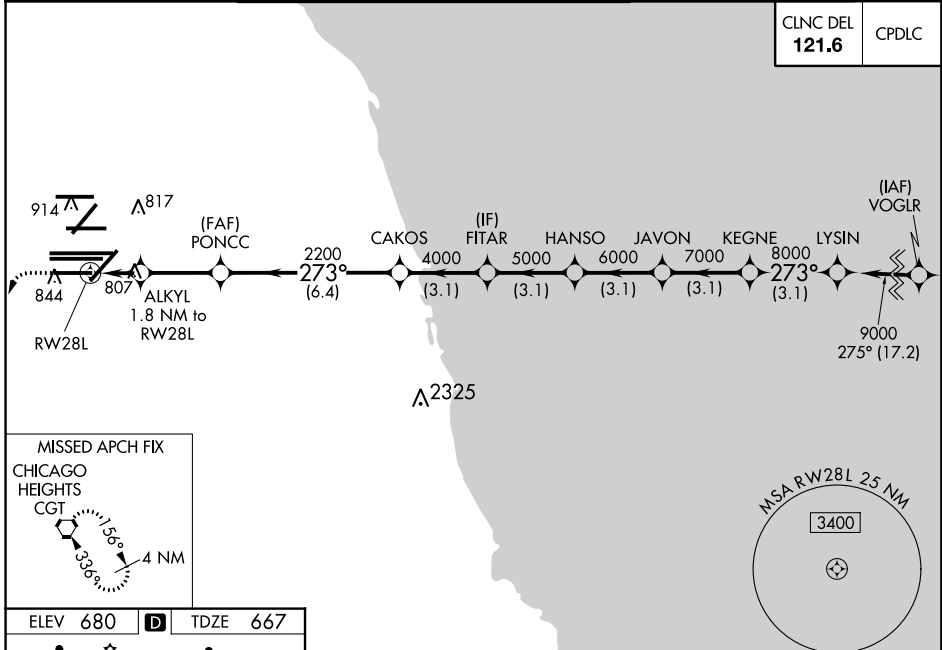
RNAV (GPS) Z RWY 28L

CHICAGO O'HARE INTL (ORD)

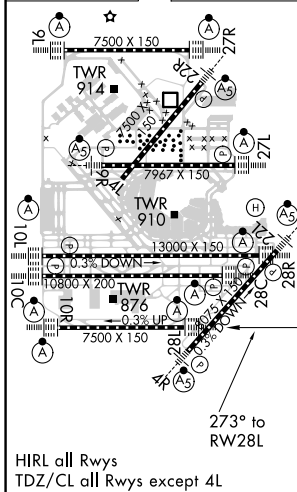
RNP APCH.	ALSF-2	MISSED APPROACH: Climb 1200 then climbing left turn to 4000 direct CGT VORTAC and hold.
Simultaneous approach authorized. LNAV procedure NA during simultaneous operations. For uncompensated Baro-VNAV systems, LNAV/VNAV NA below -19C or above 54C. Use of FD or AP required during simultaneous operations.		

D-ATIS 135.4	CHICAGO APP CON 119.0 292.125	O'HARE TOWERS 128.15 348.0 (Rwy 9L/27R) 133.0 348.0 (10R/28L) 126.9 121.15 126.9 132.7 348.0 (CENTER)	GND CON (TWR NORTH) 124.125 (TWR SOUTH) 118.05 (ALL TWRs) 226.675	(TWR CENTER) 121.75 (OBND) 121.9 (IBND)
------------------------	--	---	---	---

CLNC DEL 121.6	CPDLC
--------------------------	-------



ELEV 680	D	TDZE 667
-----------------	----------	-----------------



1200	4000	CGT						
*LNAV only.								
ALKYL	CAKOS	FITAR	HANSO	JAVON	KEGNE	LYSIN		
1.8 NM to RW28L								
*1.1 NM to RW28L	2200	4000	5000	6000	7000	8000	9000	
RW28L								GP 3.00° TCH 55
1.1 NM	0.7	2.9 NM	6.4 NM	3.1 NM	3.1 NM	3.1 NM	3.1 NM	3.1 NM
CATEGORY	A	B		C		D		
LPV	DA	867/18		200 (200-1/2)				
LNAV/VNAV	DA	1090/40		423 (500-3/4)				
LNAV	MDA	1060/24	393 (400-1/2)	1060/35		393 (400-5/8)		

EC-3, 15 AUG 2019 to 12 SEP 2019

EC-3, 15 AUG 2019 to 12 SEP 2019