

WAAS CH <b>99340</b> <b>W10E</b>	APP CRS <b>093°</b>	Rwy Idg TDZE Apt Elev	<b>7500</b> <b>680</b> <b>680</b>
--	------------------------	-----------------------------	---

# RNAV (GPS) Z RWY 10R

CHICAGO O'HARE INTL (ORD)

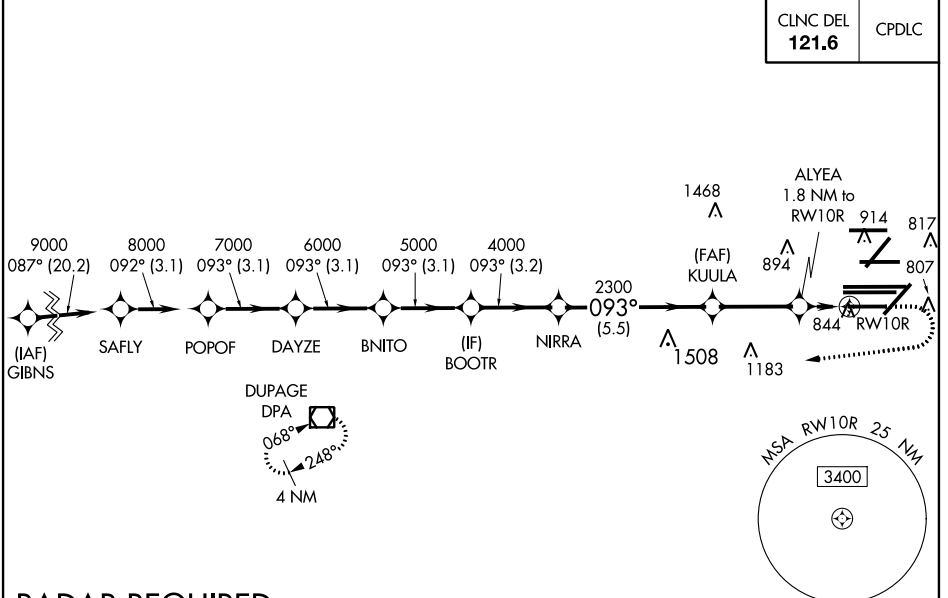
▼ For uncompensated Baro-VNAV systems, LNAV/VNAV NA below -19°C (-2°F) or above 54°C (130°F). Simultaneous approach authorized. Use of FD or AP providing RNAV track guidance required during simultaneous operations. LNAV procedure NA during simultaneous operations. DME/DME RNP-0.3 NA. For inop ALS, increase LNAV Cat C and D visibility to RVR 6000.

ALS-F-2

MISSED APPROACH: Climb to 1200 then climbing right turn to 4000 direct DPA VOR/DME and hold.

D-ATIS <b>135.4</b> <b>282.225</b>	CHICAGO APP CON <b>119.0 292.125</b>	O'HARE TOWERS <b>128.15 348.0</b> (Rwy 9L/27R) <b>133.0 348.0</b> (10R/28L) <b>120.75 121.15 126.9 132.7 348.0</b> (CENTER)	CND CON (TWR NORTH) <b>124.125</b> <b>118.05</b> (TWR SOUTH) <b>226.675</b> (ALL TWRs)	(TWR CENTER) <b>121.75</b> (OBND) <b>121.9</b> (IBND)
--	---	--	---	---

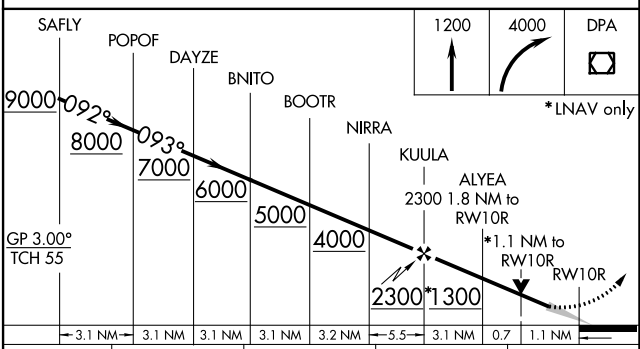
CLNC DEL <b>121.6</b>	CPDLC
--------------------------	-------



EC-3, 15 AUG 2019 to 12 SEP 2019

EC-3, 15 AUG 2019 to 12 SEP 2019

## RADAR REQUIRED



ELEV 680	<input checked="" type="checkbox"/> TDZE 680
----------	--

Plan view showing navigation aids (TWR 914, TWR 910, TWR 876), altitudes (7500 X 150, 7500 X 150, 7967 X 150, 13000 X 150, 10800 X 200, 7500 X 150), and headings (093° to RWY10R, 0.3% DOWN, 0.3% UP). Includes HIRL all Rwys and TDZ/CL all Rwys except 4L.