

WAAS CH 77937 W10D	APP CRS 090°	Rwy Idg 7500 TDZE 680 Apt Elev 680
--	------------------------	---

RNAV (GPS) Y RWY 10R

CHICAGO O'HARE INTL (ORD)

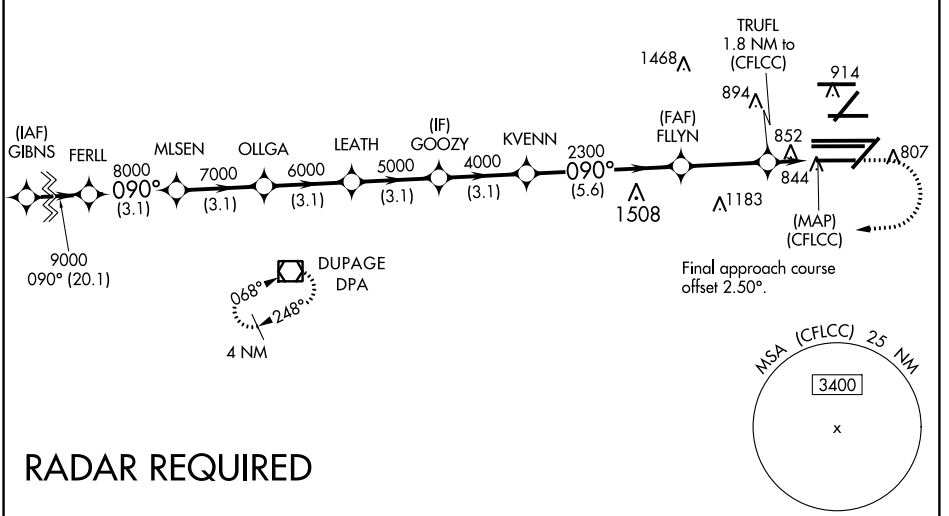
⚠ DME/DME RNP-0.3 NA. Simultaneous approach authorized. For uncompensated Baro-VNAV systems, LNAV/VNAV NA below -19°C (-2°F) or above 54°C (130°F). LNAV procedure NA during simultaneous operations. Use of FD or AP providing RNAV track guidance required during simultaneous operations. Inop table does not apply to LPV all Cats. For inop ALS, increase LNAV Cat A and B visibility to 1 SM. Rwy 10R helicopter visibility reduction below ¾ SM NA.

ALSF-2

MISSED APPROACH:
Climb to 1200 then climbing right turn to 4000 direct DPA
VOR/DME and hold.

D-ATIS 135.4 282.225	CHICAGO APP CON 119.0 292.125	O'HARE TOWERS 128.15 348.0 (Rwy 9L/27R) 133.0 348.0 (10R/28L) 120.75 121.15 126.9 132.7 348.0 (CENTER)				GND CON (TWR CENTER) 121.75 (OBND) (TWR NORTH) (TWR SOUTH) 121.9 (IBND) 226.675 (ALL TWRs)
--	---	---	--	--	--	--

CLNC DEL 121.6	CPDLC
--------------------------	-------



EC-3, 15 AUG 2019 to 12 SEP 2019

EC-3, 15 AUG 2019 to 12 SEP 2019

	ELEV 680	D	TDZE 680
	1200	4000	DPA
	*LNAV only.		
GP 3.00 TCH 55	9000	8000	7000
	3.1 NM	3.1 NM	3.1 NM
	6000	5000	4000
	3.1 NM	3.1 NM	3.1 NM
	2300	*1300	0.6
	5.6 NM	3.1 NM	1.2
CATEGORY	A	B	C
LPV DA		930-¾	250 (300-¾)
LNAV/VNAV DA		1157-1⅛	477 (500-1⅛)
LNAV MDA		1120-¾	440 (500-¾)

