

APP CRS 273°	Rwy Idg TDZE Apt Elev	7782 654 680
------------------------	-----------------------------	---

RNAV (RNP) Y RWY 27L

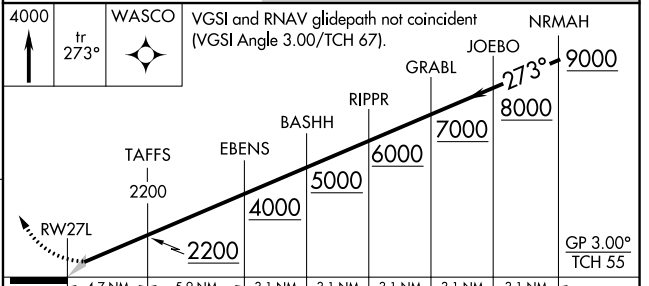
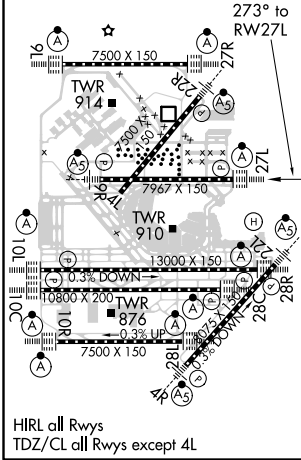
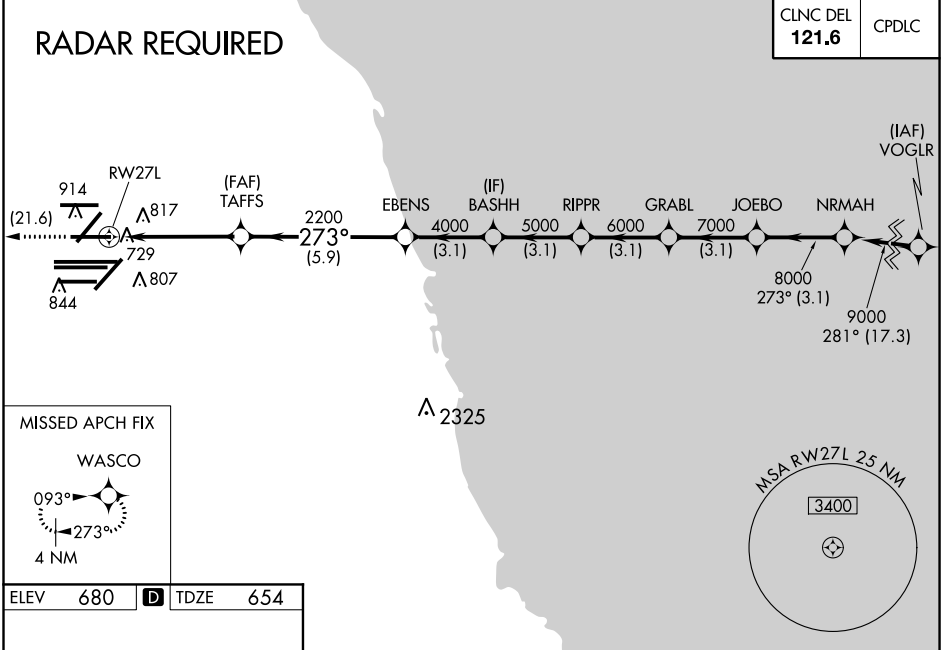
CHICAGO O'HARE INTL (ORD)

For uncompensated Baro-VNAV systems, procedure NA below -19°C (-2°F) or above 54°C (130°F). Simultaneous approach authorized. GPS required. Use of FD or AP providing RNAV track guidance required during simultaneous operations.

ALSIF-2

MISSED APPROACH: Climb to 4000 on track 273° to WASCO and hold.

D-ATIS 135.4	CHICAGO APP CON 119.0 292.125	O'HARE TOWERS 128.15 348.0 (Rwy 9L/27R) 133.0 348.0 (10R/28L) 120.75 121.15 126.9 132.7 348.0 (CENTER)	GND CON (TWR NORTH) 124.125 (TWR SOUTH) 118.05 (ALL TWS) 226.675	(TWR CENTER) 121.75 (OBND) (IBND) 121.9
------------------------	---	--	--	--



CATEGORY	A	B	C	D
RNP 0.15 DA		992/30	338 (400-%)	
RNP 0.30 DA		1162-1¼	508 (500-1¼)	

AUTHORIZATION REQUIRED

EC-3, 15 AUG 2019 to 12 SEP 2019

EC-3, 15 AUG 2019 to 12 SEP 2019