

WAAS CH 78204 W09A	APP CRS 093°	Rwy ldg TDZE 660 Apt Elev 680	7709
--	------------------------	---	-------------

RNAV (GPS) RWY 9R

CHICAGO O'HARE INTL (ORD)

▽ For uncompensated Baro-VNAV systems, LNAV/VNAV NA below -19°C (-2°F) or above 54°C (130°F). Simultaneous approach authorized. DME/DME RNP-0.3 NA. LNAV procedure NA during simultaneous operations. Use of FD or AP providing RNAV track guidance required during simultaneous operations. For inop MALS, increase LNAV Cat C/D visibility to 1 $\frac{1}{8}$ mile.

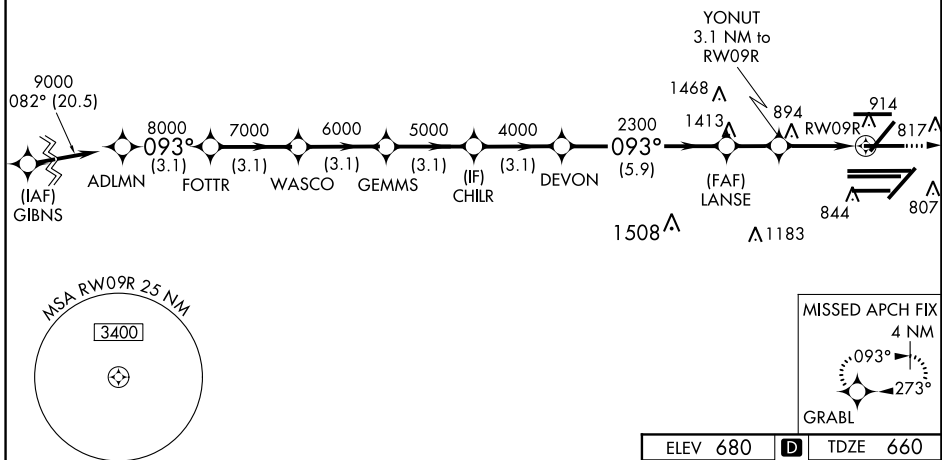


MISSED APPROACH:
Climb to 4000 direct GRABL and hold.

D-ATIS 135.4 282.225	CHICAGO APP CON 119.0 292.125	O'HARE TOWERS 128.15 348.0 (Rwy 9L/27R) 133.0 348.0 (10R/28L) 120.75 121.15 126.9 132.7 348.0 (CENTER)	GND CON (TWR CENTER) 124.125 (TWR NORTH) 121.75 (OBND) 118.05 (TWR SOUTH) 121.9 (IBND) 226.675 (ALL TWR)
--	--	--	--

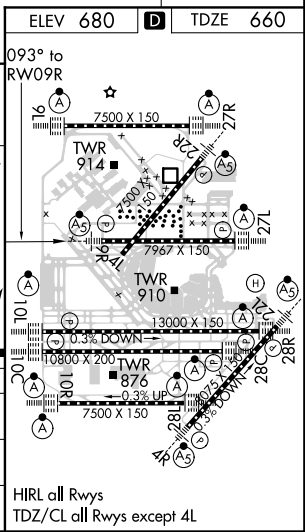
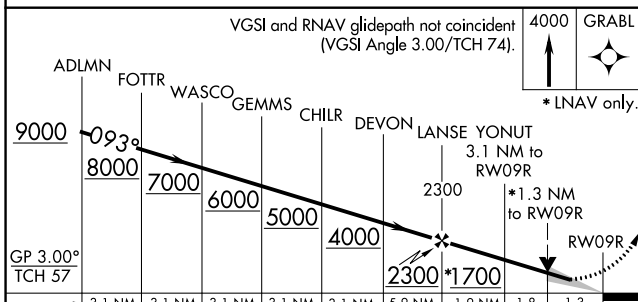
RADAR REQUIRED

CLNC DEL 121.6	CPDLC
--------------------------	-------



EC-3, 15 AUG 2019 to 12 SEP 2019

EC-3, 15 AUG 2019 to 12 SEP 2019



GP 3.00° TCH 57	3.1 NM	3.1 NM	3.1 NM	3.1 NM	3.1 NM	5.9 NM	1.9 NM	1.8	1.3
CATEGORY	A		B		C		D		
LPV DA	860/18		200 (200- $\frac{1}{2}$)						
LNAV/VNAV DA	1047/40		387 (400- $\frac{3}{4}$)						
LNAV MDA	1160/24		500 (500- $\frac{1}{2}$)		1160/50		500 (500-1)		