

WAAS CH 99508 W09B	APP CRS 093°	Rwy ldg 7500 TDZE 668 Apt Elev 680
--	------------------------	---

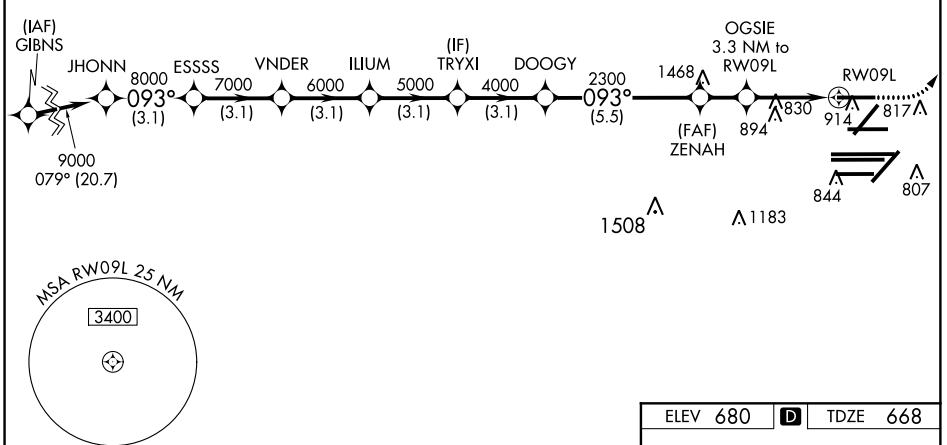
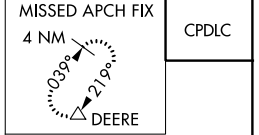
RNAV (GPS) RWY 9L

CHICAGO O'HARE INTL (ORD)

PBN APCH. RADAR required for procedure entry.		ALSIF-2 	MISSED APPROACH: Climb to 1100 then climbing left turn to 4000 direct DEERE and hold.
<p>▼ For uncompensated Baro-VNAV systems, procedure NA below -19°C or above 54°C. Simultaneous approach authorized. LNAV procedure NA during simultaneous operations. Use of FD or AP providing RNAV track guidance required during simultaneous operations. For inop ALSF, increase LNAV/VNAV all Cats visibility to RVR 5000 and LNAV Cts C/D visibility to RVR 6000.</p>			

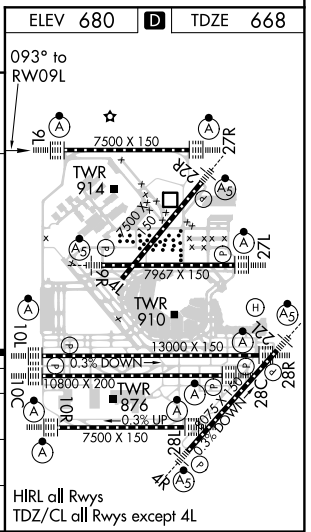
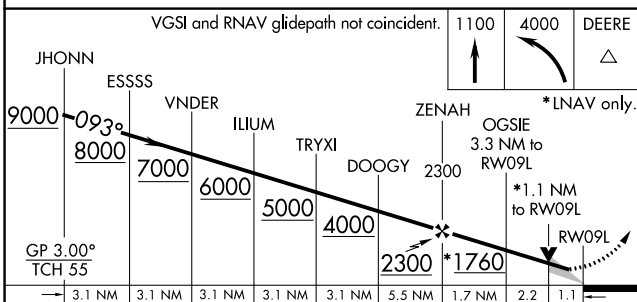
CHICAGO APP CON	O'HARE TOWERS				GND CON		(TWR CENTER)	CLNC DEL
119.0 292.125	128.15 348.0 (Rwy 9L/27R)	133.0 348.0 (10R/28L)	118.05 (TWR SOUTH)	121.75 (TWR NORTH)	121.9 (OBND)	121.9 (IBND)	121.6	
	120.75 121.15 126.9 132.7 348.0 (CENTER)		226.675 (ALL TWRS)					

D-ATIS 135.4 282.225
--



EC-3, 15 AUG 2019 to 12 SEP 2019

EC-3, 15 AUG 2019 to 12 SEP 2019



CATEGORY	A	B	C	D
LPV DA		868/18	200 (200-½)	
LNAV/VNAV DA		989/30	321 (400-¾)	
LNAV MDA	1080/24	412 (500-½)	1080/40	412 (500-¾)