


WAAS CH 81929 W04A	APP CRS 044°	Rwy Idg 8075 TDZE 661 Apt Elev 672
--	------------------------	---

RNAV (GPS) RWY 4R

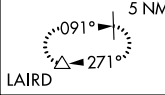
CHICAGO O'HARE INTL (ORD)

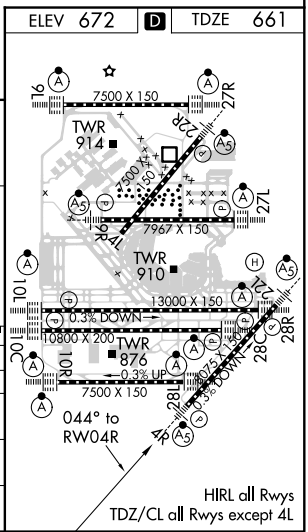
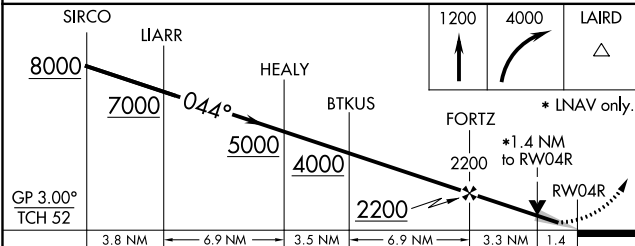
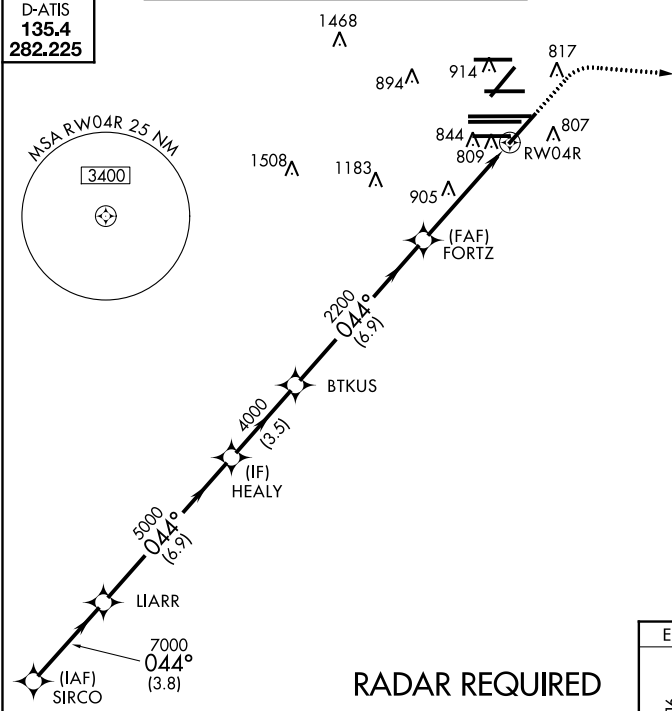
▽ For uncompensated Baro-VNAV systems, LNAV/VNAV NA below -22°C (-7°F) or above 39°C (102°F). Simultaneous approach authorized with Rwy 4L. DME/DME RNP-0.3 NA. LNAV procedure NA during simultaneous operations. Use of FD or AP providing RNAV track guidance required during simultaneous operations.

MALSR  **MISSED APPROACH:** Climb to 1200 then climbing right turn to 4000 direct LAIRD and hold, continue climb-in-hold to 4000.

CHICAGO APP CON 119.0 292.125	O'HARE TOWERS 128.15 348.0 (Rwy 9L/27R) 133.0 348.0 (10R/28L) 120.75 121.15 126.9 132.7 348.0 (CENTER)	GND CON (TWR CENTER) 124.125 (TWR NORTH) 118.05 (TWR SOUTH) 226.675 (ALL TWRs)	(TWR CENTER) 121.75 (OBND) 121.9 (IBND)	CLNC DEL 121.6
---	--	--	--	--------------------------

D-ATIS
135.4
282.225

MISSED APCH FIX 5 NM
 CPDLC



CATEGORY	A	B	C	D
LPV DA		861/18	200 (200-½)	
LNAV/VNAV DA		990/32	329 (400-⅓)	
LNAV MDA	1160/24	499 (500-½)	1160/50	499 (500-1)
CIRCLING	1220-1	548 (600-1)	1220-1½ 548 (600-1½)	1240-2 568 (600-2)

EC-3, 15 AUG 2019 to 12 SEP 2019

EC-3, 15 AUG 2019 to 12 SEP 2019