

|  |                        |                             |   |
|--|------------------------|-----------------------------|---|
| WAAS<br>CH <b>62905</b><br><b>W04B</b> | APP CRS<br><b>042°</b> | Rwy Idg<br>TDZE<br>Apt Elev | <b>7500</b><br><b>658</b><br><b>672</b> |
|--|------------------------|-----------------------------|---|

# RNAV (GPS) RWY 4L

CHICAGO O'HARE INTL (ORD)

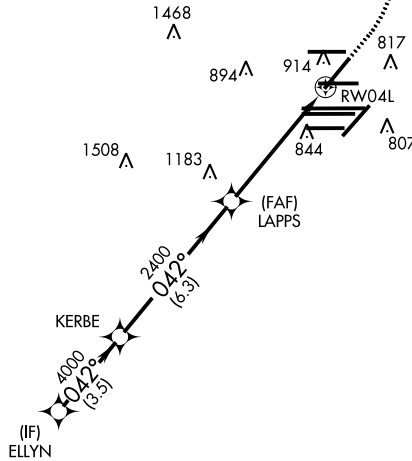
**▼** For uncompensated Baro-VNAV systems, LNAV/VNAV NA below -22°C (-7°F) or above 39°C (102°F). Simultaneous approach authorized with Rwy 4R. DME/DME RNP-0.3 NA. LNAV procedure NA during simultaneous operations. Use of FD or AP providing RNAV track guidance required during simultaneous operations.

**MISSED APPROACH:** Climb to 1300 then climbing left turn to 4000 direct OBK VOR/DME and hold.

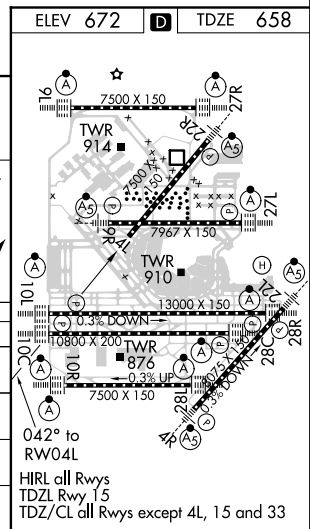
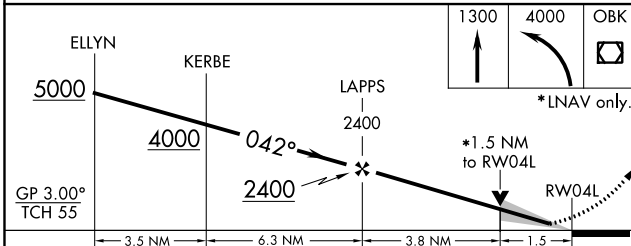
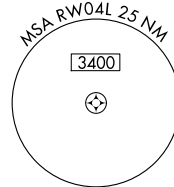
|   |  |  |  |                          |
|---|--|--|--|--------------------------|
| CHICAGO APP CON<br><b>119.0 292.125</b> | O'HARE TOWERS<br><b>128.15 348.0</b> (Rwy 9L/27R) <b>133.0 348.0</b> (10R/28L) <b>126.9 348.0</b> (CENTER) | GND CON (TWR NORTH) <b>124.125</b><br>(TWR SOUTH) <b>118.05</b><br>(ALL TWRs) <b>226.675</b> | (TWR CENTER) <b>121.75</b> (OBND)<br>(TWR SOUTH) <b>121.9</b> (IBND) | CLNC DEL<br><b>121.6</b> |
|---|--|--|--|--------------------------|

|  |
|--|
| D-ATIS<br><b>135.4</b><br><b>282.225</b> |
|--|

## RADAR REQUIRED



CPDLC



| CATEGORY     | A       | B           | C                       | D                     |
|--------------|---------|-------------|-------------------------|-----------------------|
| LPV DA       |         | 858/40      | 200 (200-¾)             |                       |
| LNAV/VNAV DA |         | 1117-1½     | 459 (500-1½)            |                       |
| LNAV MDA     | 1180/55 | 522 (600-1) | 1180-1½                 | 522 (600-1½)          |
| CIRCLING     | 1220-1  | 548 (600-1) | 1220-1½<br>548 (600-1½) | 1240-2<br>568 (600-2) |