


WAAS CH 42804 W28A	APP CRS 273°	Rwy Idg TDZE Apt Elev	13000 651 680
--	------------------------	-----------------------------	--

RNAV (GPS) RWY 28R

CHICAGO O'HARE INTL (ORD)

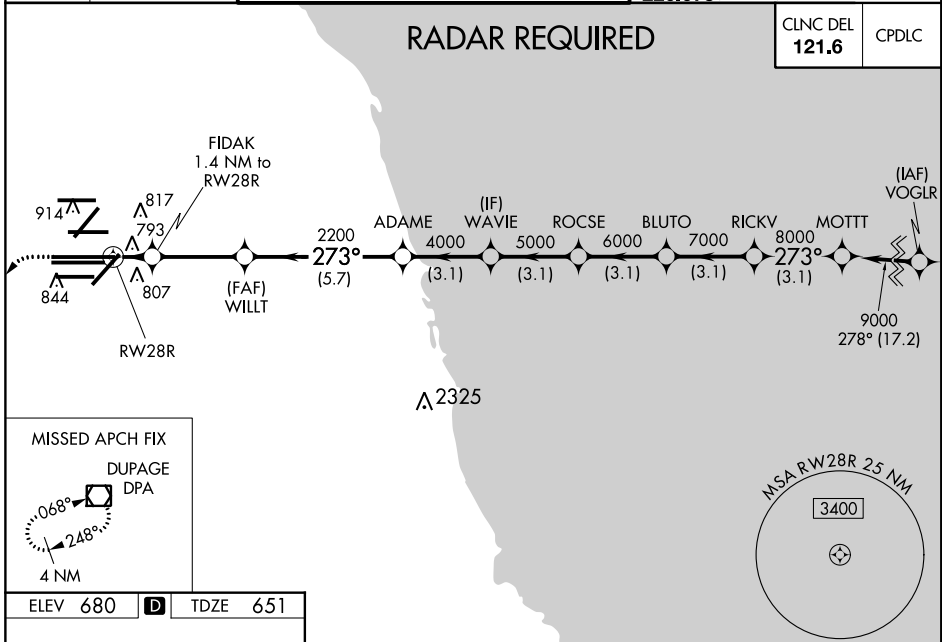
▼ For uncompensated Baro-VNAV systems, LNAV/VNAV NA below -19°C (-2°F) or above 54°C (130°F). Simultaneous approach authorized. DME/DME RNP-0.3 NA. For inop ALSF-2, increase LNAV/VNAV all Cats visibility to 1 1/4 mile and LNAV Cats C/D visibility to RVR 6000. LNAV procedure NA during simultaneous operations. Use of FD or AP providing RNAV track guidance required during simultaneous operations.

ALSF-2



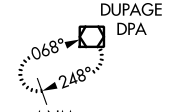
MISSED APPROACH: Climb to 1200 then climbing left turn to 4000 direct DPA VOR/DME and hold.

D-ATIS 135.4	CHICAGO APP CON 119.0 292.125	O'HARE TOWERS 128.15 348.0 (Rwy 9L/27R) 133.0 348.0 (10R/28L) 120.75 121.15 126.9 132.7 348.0 (CENTER)	GND CON (TWR NORTH) 124.125 (TWR SOUTH) 118.05 (ALL TWRS) 226.675	(TWR CENTER) 121.75 (OBND) 121.9 (IBND)
------------------------	---	--	---	---

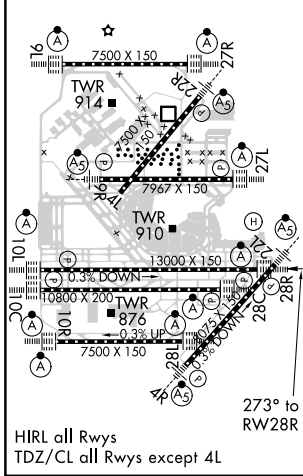


MISSED APCH FIX

DUPAGE DPA



ELEV 680	D	TDZE 651
-----------------	----------	-----------------



1200 4000 DPA

VGSI and RNAV glidepath not coincident (VGSI Angle 3.00°/TCH 70).

*LNAV only.

	FIDAK 1.4 NM to RWY 28R	WILLT 2200	ADAME 4000	WAVIE 5000	ROCSE 6000	BLUTO 7000	RICKV 8000	MOTT 9000
	1.4	3.3 NM	5.7 NM	3.1 NM	3.1 NM	3.1 NM	3.1 NM	3.1 NM
CATEGORY	A	B	C	D				
LPV DA	851/18			200 (200-1/2)				
LNAV/VNAV DA	1041/45			390 (400-2/3)				
LNAV MDA	1060/24		409 (400-1/2)		1060/40		409 (400-3/4)	

GP 3.00° TCH 54

EC-3, 15 AUG 2019 to 12 SEP 2019

EC-3, 15 AUG 2019 to 12 SEP 2019