

WAAS CH <b>42634</b> <b>W28B</b>	APP CRS <b>273°</b>	Rwy Idg <b>10800</b> TDZE <b>651</b> Apt Elev <b>680</b>
--	------------------------	--

# RNAV (GPS) RWY 28C

CHICAGO O'HARE INTL (ORD)

▼ DME/DME RNP-0.3 NA. Simultaneous approach authorized. For uncompensated Baro-VNAV systems, LNAV/VNAV NA below -19°C (-2°F) or above 54°C (130°F). LNAV procedure NA during simultaneous operations. Use of FD or AP providing RNAV track guidance required during simultaneous operations. For inop ALSF, increase LNAV Cat C and D visibility to RVR 6000.

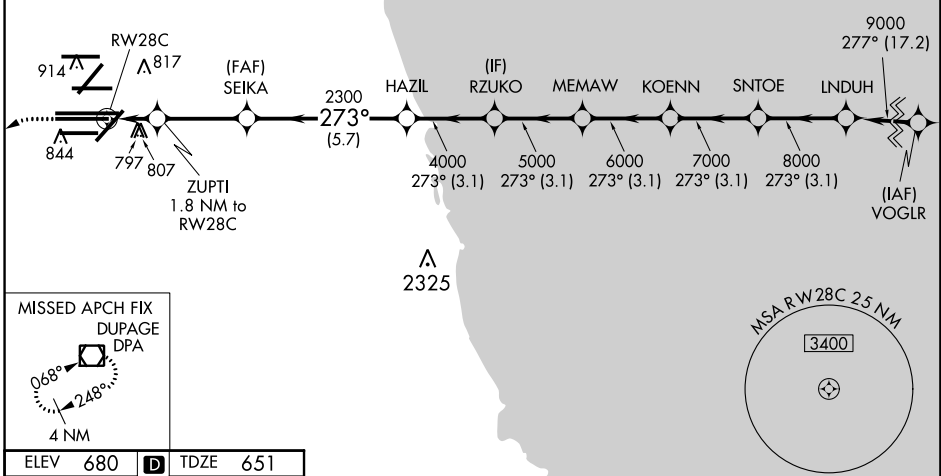


**MISSED APPROACH:**  
Climb to 1100 then climbing left turn to 4000 direct DPA VOR/DME and hold.

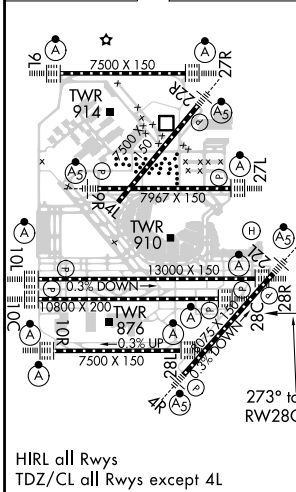
D-ATIS <b>135.4</b>	CHICAGO APP CON <b>119.0 292.125</b>	O'HARE TOWERS <b>128.15 348.0</b> (Rwy 9L/27R) <b>133.0 348.0</b> (10R/28L) <b>121.75</b> (CENTER) <b>121.95</b> (OBND) <b>121.9</b> (IBND)				GND CON (TWR NORTH) <b>124.125</b>	GND CON (TWR SOUTH) <b>118.05</b>	GND CON (ALL TWRs) <b>226.675</b>
------------------------	---	--	--	--	--	---------------------------------------	--------------------------------------	--------------------------------------

CLNC DEL <b>121.6</b>	CPDLC
--------------------------	-------

## RADAR REQUIRED



ELEV <b>680</b>	<b>D</b>	TDZE <b>651</b>
-----------------	----------	-----------------



1100	4000	DPA	VGSi and RNAV glidepath not coincident (VGSi Angle 3.00°/TCH 80).			
*LNAV only.						
ZUPTI 1.8 NM to RWY 28C	SEIKA	HAZIL	RZUKO	MEMAW	KOENN	SNTOE LNDUH
*1 NM to RWY 28C	2300	4000	5000	6000	7000	8000 9000
RWY 28C	*1260	2300				GP 3.00° TCH 55
	1 NM	0.8	3.2 NM	5.7 NM	3.1 NM	3.1 NM
CATEGORY	A	B	C	D		
LPV DA		851/18	200 (200-½)			
LNAV/VNAV DA		1094/50	443 (500-1)			
LNAV MDA	1060/24	409 (400-½)	1060/40	409 (400-¾)		

EC-3, 15 AUG 2019 to 12 SEP 2019

EC-3, 15 AUG 2019 to 12 SEP 2019