

WAAS CH 69508 W27B	APP CRS 273°	Rwy Idg TDZE Apt Elev	7500 664 680
--	------------------------	-----------------------------	---

RNAV (GPS) RWY 27R

CHICAGO O'HARE INTL (ORD)

RNP APCH.

RADAR required for procedure entry.

⚠ For uncompensated Baro-VNAV systems, procedure NA below -19°C or above 54°C.
Simultaneous approach authorized. LNAV procedure NA during simultaneous operations.
Use of FD or AP providing RNAV track guidance required during simultaneous operations.

ALSIF-2

MISSED APPROACH:
Climb to 1100 then climbing right turn to 4000 direct UMUZI and hold.

D-ATIS 135.4	CHICAGO APP CON	O'HARE TOWERS				GND CON	(TWR CENTER)
282.225	119.0 292.125	128.15 (Rwy 9L/27R)	348.0	133.0	348.0 (10R/28L)	124.125 (TWR NORTH)	121.75 (OBND)
		120.75	121.15	126.9	132.7	118.05 (TWR SOUTH)	121.9 (IBND)
						226.675 (ALL TWRS)	

MISSED APCH FIX

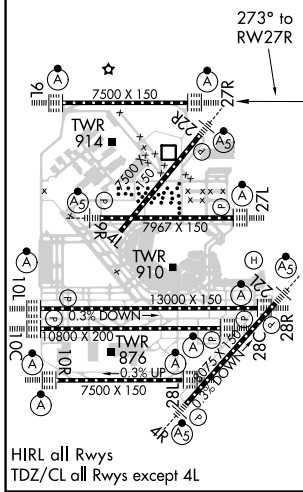
4 NM

UMUZI

CLNC DEL **121.6** CPDLC



ELEV 680	D	TDZE 664
----------	----------	----------



1100 4000 UMUZI VGSi and RNAV glidepath not coincident.

VINNY 9000

JOKKR 8000

IYLEK 7000

WELEV 6000

HAREE 5000

BONZO 4000

SIBLY 2200

* 1.2 NM to RWY 27R

2200

GP 3.00° TCH 55

CATEGORY	A	B	C	D
LPV DA		864/18	200 (200-½)	
LNAV/VNAV DA		961/24	297 (300-½)	
LNAV MDA	1120/24	456 (500-½)	1120/45	456 (500-¾)

EC-3, 15 AUG 2019 to 12 SEP 2019

EC-3, 15 AUG 2019 to 12 SEP 2019