

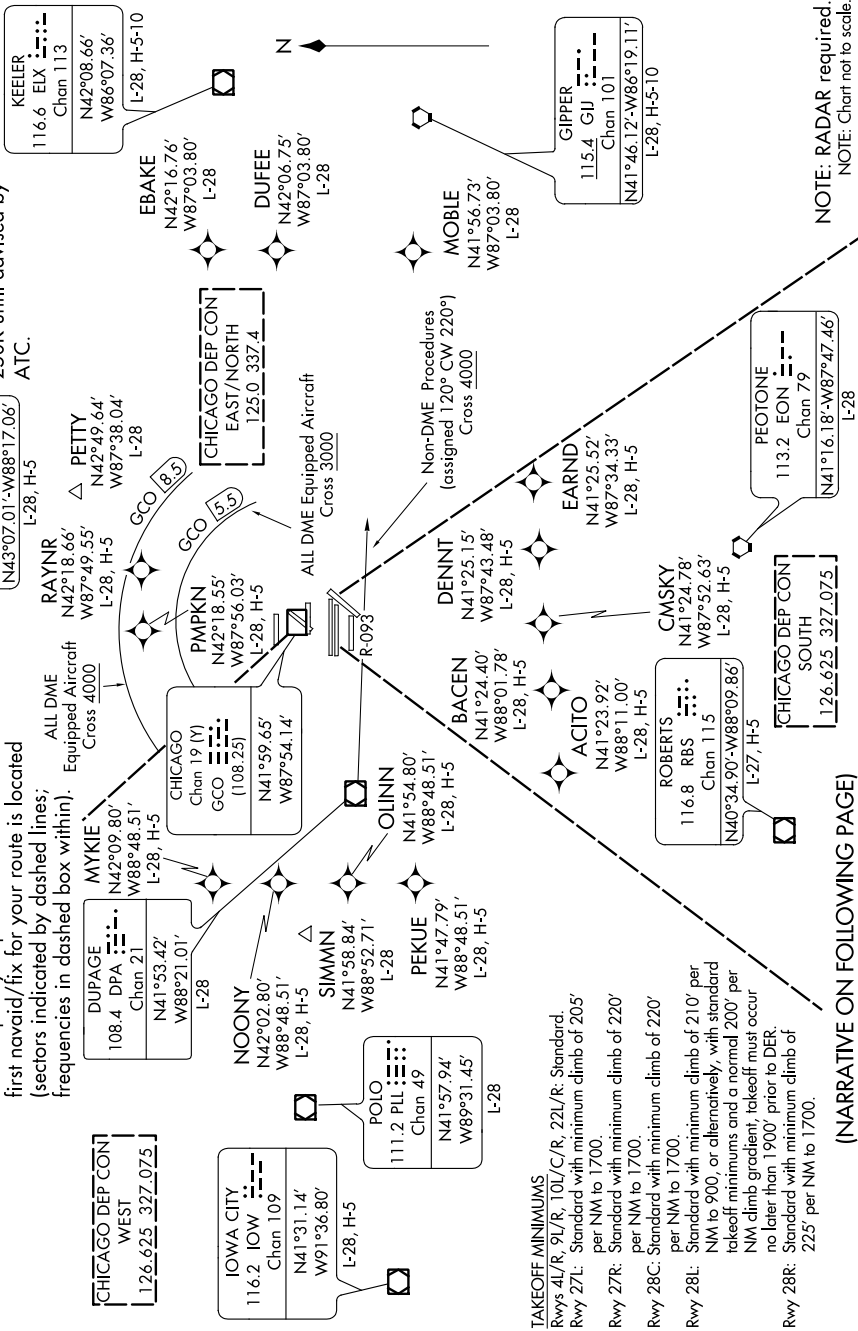
O'HARE FIVE DEPARTURE

EC-3, 15 AUG 2019 to 12 SEP 2019

TOP ALTITUDE:
5000

SPECIAL INSTRUCTIONS: For appropriate departure control frequency, see graphic. Use frequency depicted within the sector where first navaid/fix for your route is located (sectors indicated by dashed lines; frequencies in dashed box within).

NOTE: All turbo-jet departures in all directions, maintain 250K until advised by ATC.



NOTE: RADAR required.
NOTE: Chart not to scale.

CHICAGO DEP CON WEST
126.625 327.075

IOWA CITY
116.2 IOW
Chan 109
N41°31.14'
W91°36.80'
L-28, H-5

CHICAGO DEP CON EAST/NORTH
125.0 337.4

CHICAGO DEP CON SOUTH
126.625 327.075

CHICAGO DEP CON WEST
126.625 327.075

CHICAGO DEP CON EAST/NORTH
125.0 337.4

CHICAGO DEP CON SOUTH
126.625 327.075

TAKEOFF MINIMUMS
Rwys 4L/R, 9L/R, 10L/C/R, 22L/R: Standard.
Rwy 27L: Standard with minimum climb of 205' per NM to 1700.
Rwy 27R: Standard with minimum climb of 220' per NM to 1700.
Rwy 28C: Standard with minimum climb of 220' per NM to 1700.
Rwy 28L: Standard with minimum climb of 210' per NM to 900, or alternatively, with standard takeoff minimums and a normal 200' per NM climb gradient, takeoff must occur no later than 1900' prior to DER.
Rwy 28R: Standard with minimum climb of 225' per NM to 1700.

(NARRATIVE ON FOLLOWING PAGE)

EC-3, 15 AUG 2019 to 12 SEP 2019

O'HARE FIVE DEPARTURE