

LOC/DME I-VZE 108.95 Chan 26 (Y)	APP CRS 273°	Rwy ldg 10800 TDZE 651 Apt Elev 680
------------------------------------------------------	------------------------	----------------------------------------------------------------

(CLOSE PARALLEL)

CHICAGO O'HARE INTL (ORD)

Aircraft not GPS equipped - RADAR required for procedure entry.
DME or RADAR required.
From VOGLR: RNAV 1-GPS required.

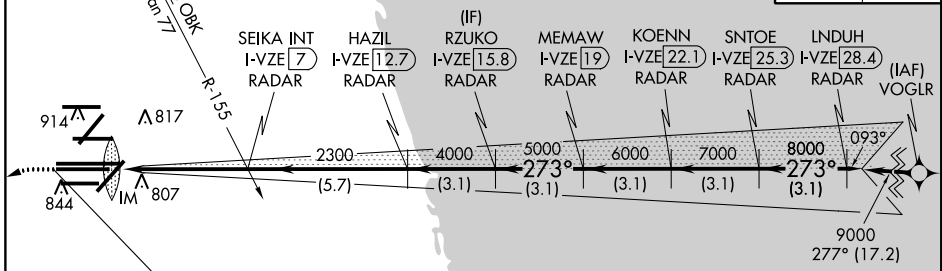
ALSF-2

MISSED APPROACH:
Climb to 1100 then climbing
left turn to 4000 on heading
215° and DPA VOR/DME
R-082 to DPA VOR/DME
and hold.

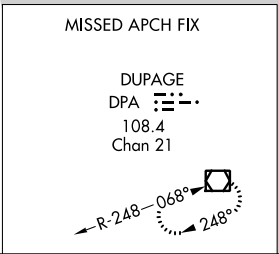
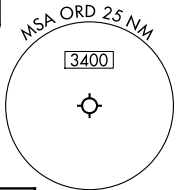
Simultaneous approach authorized. Use of FD or AP required during simultaneous operations. Dual VHF comm required. See additional requirements on AAUP. Requires specific OPSPEC, MSPEC, or LOA approval and use of HUD to DH.

D-ATIS 135.4 282.225	CHICAGO APP CON 119.0 292.125	O'HARE TOWERS 128.15 348.0 (Rwy 9L/27R) 133.0 348.0 (10R/28L) 120.75 121.15 126.9 132.7 348.0 (CENTER) PRM 119.625	GND CON (TWR CENTER) (TWR NORTH) (TWR SOUTH) (ALL TWRs) 124.125 121.75 118.05 121.9
------------------------------------------	---------------------------------------------------	---------------------------------------------------------------------------------------------------------------------------------------------------------	-----------------------------------------------------------------------------------------------

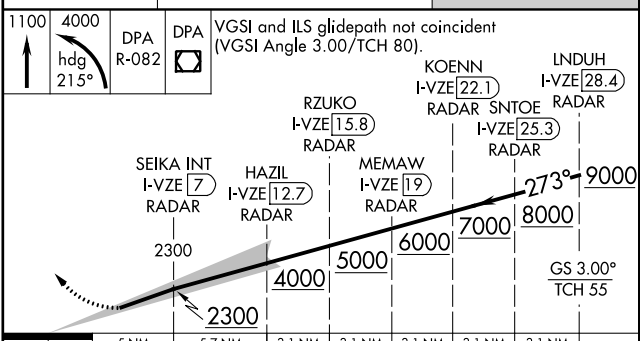
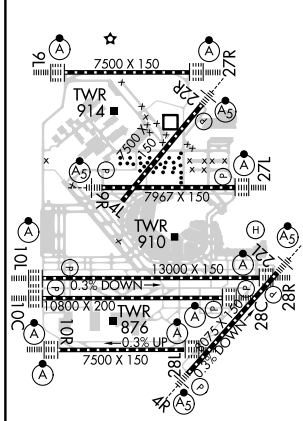
CLNC DEL 121.6	CPDLC
--------------------------	-------



LOCALIZER 108.95
I-VZE
Chan 26 (Y)



ELEV 680	D	TDZE 651
-----------------	----------	-----------------



1044'	5 NM	5.7 NM	3.1 NM	3.1 NM	3.1 NM	3.1 NM	3.1 NM
CATEGORY	A	B	C	D			
S-ILS 28C	RA 155/14 150 DA 801						

SA CATEGORY I ILS - SPECIAL AIRCREW & AIRCRAFT CERTIFICATION REQUIRED

EC-3, 15 AUG 2019 to 12 SEP 2019

EC-3, 15 AUG 2019 to 12 SEP 2019