


ILS PRM RWY 28C (CAT II & III) (CLOSE PARALLEL) CHICAGO O'HARE INTL (ORD)

LOC/DME I-VZE 108.95 Chan 26 (Y)	APP CRS 273°	Rwy ldg 10800 TDZE 651 Apt Elev 680
--	------------------------	--

Aircraft not GPS equipped - RADAR required for procedure entry. DME or RADAR required.
From VOGLR: RNAV 1-GPS required.

▽ Simultaneous approach authorized. Use of FD or AP required during simultaneous operations. Dual VHF comm required. See additional requirements on AAUP.
CAT II: RVR 1000 authorized with specific OPSPEC, MSPEC, or LOA approval and use of autoland or HUD to touchdown.

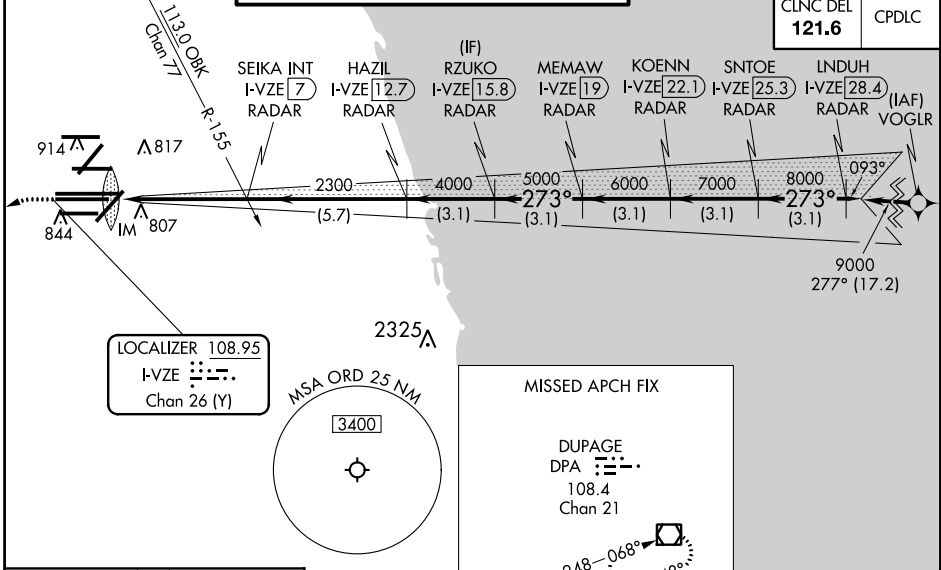
ALS-F-2


MISSED APPROACH:
Climb to 1100 then climbing left turn to 4000 on heading 215° and DPA VOR/DME R-082 to DPA VOR/DME and hold.

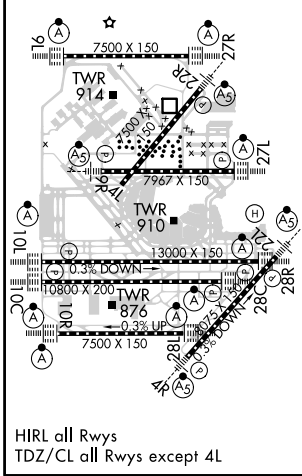
D-ATIS 135.4 282.225	CHICAGO APP CON 119.0 292.125
--	---

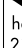
O'HARE TOWERS			
128.15	348.0 (Rwy 9L/27R)	133.0	348.0 (10R/28L)
120.75	121.15	126.9	132.7
PRM 119.625			

GND CON (TWR CENTER)		GND CON (TWR SOUTH)	
124.125 (TWR NORTH)	121.75 (OBND)	118.05 (TWR SOUTH)	121.9 (IBND)
226.675 (ALL TWRS)			



ELEV 680	D	TDZE 651
-----------------	----------	-----------------



1100	4000	DPA R-082	DPA <input checked="" type="checkbox"/>	VGSI and ILS glidepath not coincident (VGSI Angle 3.00/TCH 80).	LINDUH I-VZE [28.4] RADAR
hdg 215°					
		RZUKO I-VZE [15.8] RADAR	KOENN I-VZE [22.1] RADAR	SNTOE I-VZE [25.3] RADAR	
		SEIKA INT I-VZE [7] RADAR	HAZIL I-VZE [12.7] RADAR	MEMAW I-VZE [19] RADAR	
					9000
					GS 3.00° TCH 55
CATEGORY	A	B	C	D	
S-ILS 28C	CAT II RA 105/12 100 DA 751				
S-ILS 28C	CAT III RVR 06				

CATEGORY II & III ILS - SPECIAL AIRCREW & AIRCRAFT CERTIFICATION REQUIRED

EC-3, 15 AUG 2019 to 12 SEP 2019

EC-3, 15 AUG 2019 to 12 SEP 2019