

ILS PRM RWY 10C (CLOSE PARALLEL)

CHICAGO O'HARE INTL (ORD)

LOC/DME I-SXH 108.95 Chan 26(Y)	APP CRS 093°	Rwy Ldg 10540 TDZE 669 Apt Elev 680
--	------------------------	--

RNAV 1-GPS or RADAR required for procedure entry. DME or RADAR required.
From GIBNS: RNAV-1 GPS required.



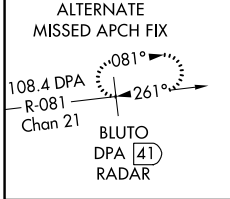
MISSED APPROACH: Climb to 4000 on heading 093° and CGT VORTAC R-336 to CGT VORTAC and hold.

Simultaneous approach authorized.
Use of FD or AP required during simultaneous operations.
Dual VHF comm required. See additional requirements on AAUP.

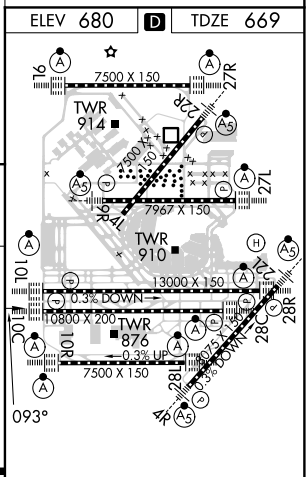
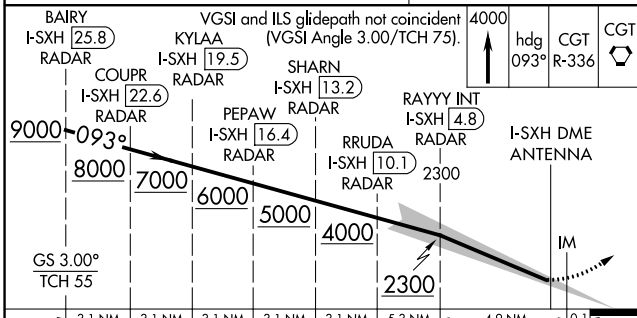
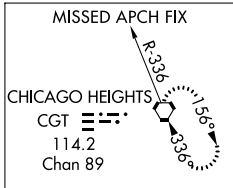
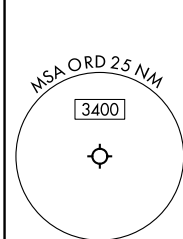
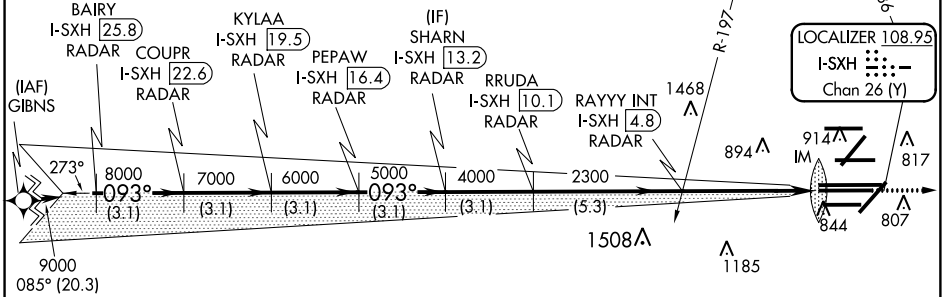
D-ATIS 135.4 282.225	CHICAGO APP CON 119.0 292.125
--	---

O'HARE TOWERS			
128.15	348.0 (Rwy 9L/27R)	133.0	348.0 (10R/28L)
120.75	121.15	126.9	132.7 (CENTER)
PRM 119.625			

GND CON (TWR CENTER) 124.125	(TWR NORTH) 121.75 (OBND)
(TWR SOUTH) 118.05	(IBND) 121.9
226.675 (ALL TWR)	



CLNC DEL 121.6	CPDLC
--------------------------	-------



CATEGORY	A	B	C	D
S-ILS 10C		869/18	200 (200-1/2)	

HIRL all Rwys
TDZ/CL all Rwys except 4L

EC-3, 15 AUG 2019 to 12 SEP 2019

EC-3, 15 AUG 2019 to 12 SEP 2019