

| | | |
|--|------------------------|--|
| LOC/DME I-SAJ 111.75 Chan 54 (Y) | APP CRS 093° | Rwy Idg 7500 TDZE 668 Apt Elev 680 |
|--|------------------------|--|

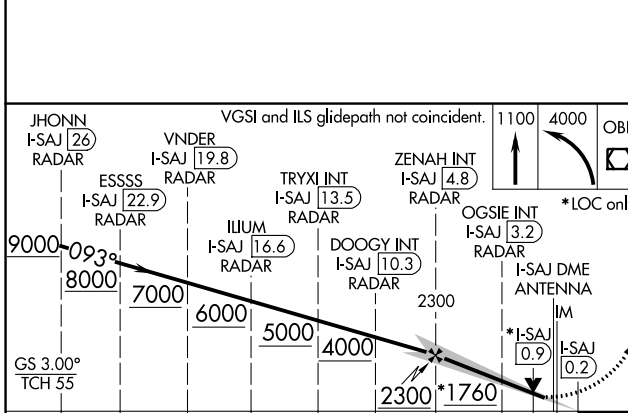
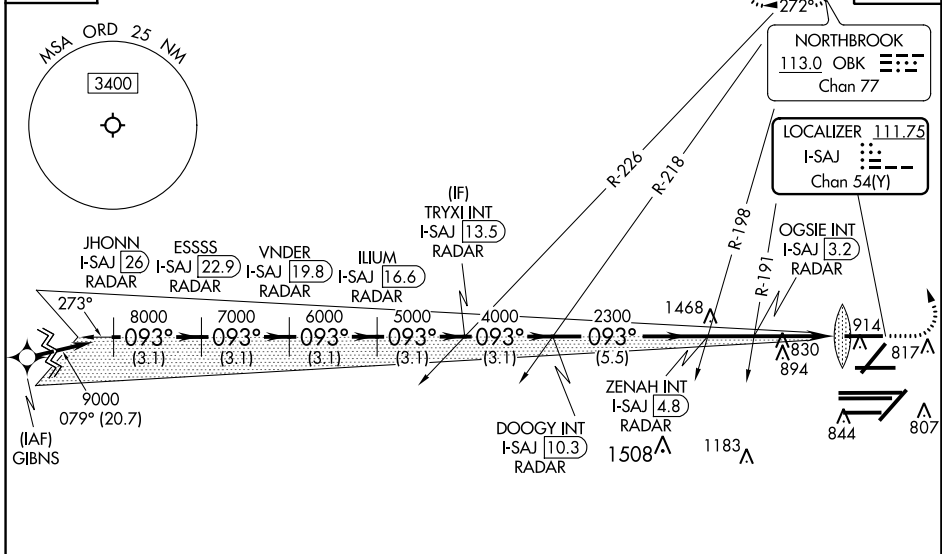
ILS or LOC RWY 9L

CHICAGO O'HARE INTL (ORD)

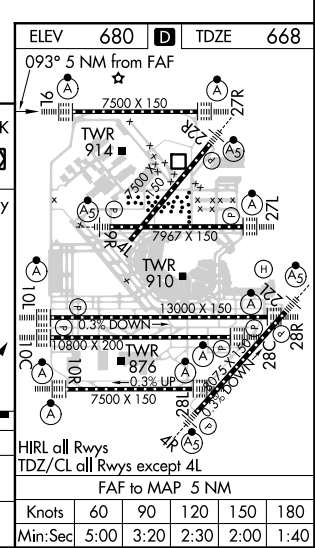
| | | |
|--|------------|---|
| RNAV-1 GPS or RADAR required for procedure entry. RADAR or DME required. | ALSF-2 | MISSED APPROACH: Climb to 1100 then climbing left turn to 4000 direct OBK VOR/DME and hold, continue climb-in-hold to 4000. |
| Simultaneous approach authorized. | | CPDLC |

| | | | | |
|---|--|--|---|--------------------------|
| CHICAGO APP CON 119.0 292.125 | O'HARE TOWERS 128.15 348.0 (Rwy 9L/27R) 133.0 348.0 (10R/28L) 120.75 121.15 126.9 132.7 348.0 (CENTER) | GND CON (TWR CENTER) 124.125 (TWR NORTH) 118.05 (TWR SOUTH) 226.675 (ALL TWRS) | (TWR CENTER) 121.75 (OBND) 121.9 (IBND) | CLNC DEL 121.6 |
|---|--|--|---|--------------------------|

| |
|--|
| D-ATIS 135.4 282.225 |
|--|



| | | | | |
|----------|---------|-------------|-------------|-------------|
| CATEGORY | A | B | C | D |
| S-ILS 9L | 868/18 | | 200 (200-½) | |
| S-LOC 9L | 1080/24 | 412 (500-½) | 1080/40 | 412 (500-¾) |



EC-3, 15 AUG 2019 to 12 SEP 2019

EC-3, 15 AUG 2019 to 12 SEP 2019