

LOC I-FJU	APP CRS	Rwy ldg	8075
110.1	045°	TDZE	661
		Apt Elev	680

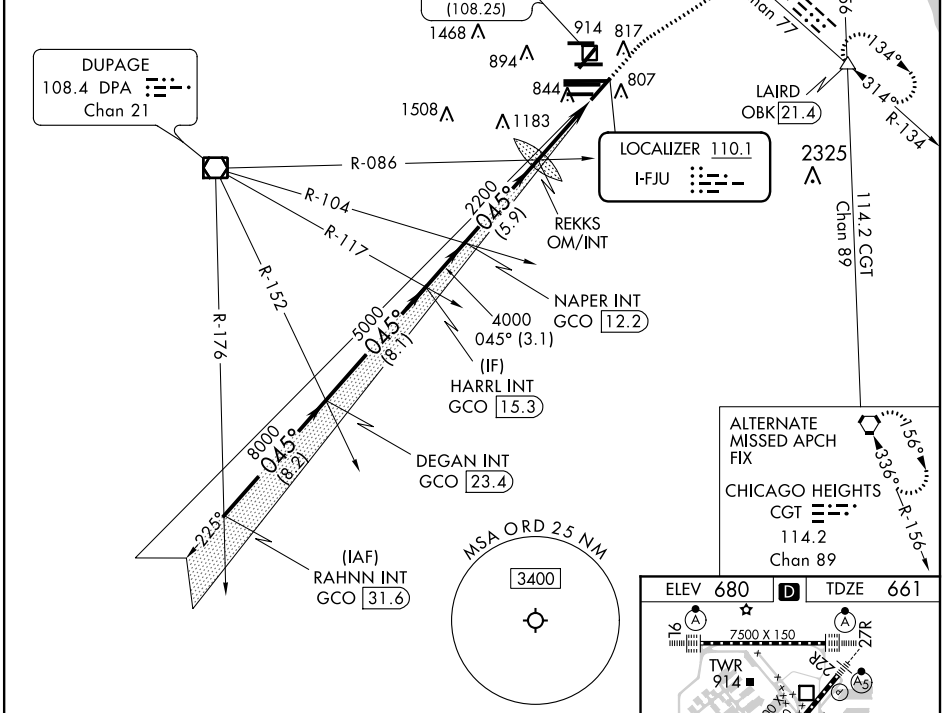
ILS or LOC RWY 4R

CHICAGO O'HARE INTL (ORD)

RADAR required for procedure entry.		MALSR	MISSED APPROACH: Climb to 1200 then climbing right turn to 4000 on heading 060° and OBK VOR/DME R-134 to LAIRD INT/OBK 21.4 DME and hold.
Simultaneous approach authorized.			

CHICAGO APP CON	O'HARE TOWERS	GND CON (TWR CENTER)	CLNC DEL
119.0 292.125	128.15 348.0 (Rwy 9L/27R) 133.0 348.0 (10R/28L) 348.0 (CENTER)	124.125 (TWR NORTH) 118.05 (TWR SOUTH) 226.675 (ALL TWRs)	121.6

D-ATIS
135.4
282.225

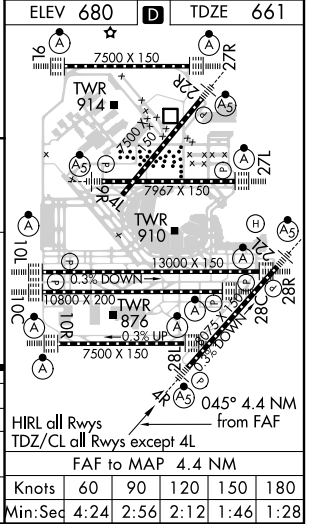


ALTERNATE MISSED APCH FIX

CHICAGO HEIGHTS CGT 114.2 Chan 89

RAHNN INT GCO 31.6	DEGAN INT GCO 23.4	HARRL INT GCO 15.3	NAPER INT GCO 12.2	REKKS OM/INT 2128	OBK R-134	LAIRD
VGS1 and ILS glidepath not coincident (VGS1 Angle 3.00/TCH 67).						
1200						
4000						
hdg 060°						
11000						
GS 3.00° TCH 52						
8.2 NM						
8.1 NM						
3.1 NM						
5.9 NM						
4.4 NM						

CATEGORY	A	B	C	D
S-ILS 4R	861/18		200 (200-½)	
S-LOC 4R	1160/24 499 (500-½)		1160/50 499 (500-1)	
CIRCLING	1220-1 540 (600-1)		1220-1½ 540 (600-1½) 1460-2½ 780 (800-2½)	



EC-3, 15 AUG 2019 to 12 SEP 2019

EC-3, 15 AUG 2019 to 12 SEP 2019

ELEV 680	TDZE 661
Knots 60 90 120 150 180	Min:Sec 4:24 2:56 2:12 1:46 1:28