

LOC/DME I-TSL <b>111.1</b> Chan 48	APP CRS <b>273°</b>	Rwy ldg <b>13000</b> TDZE <b>651</b> Apt Elev <b>680</b>
--	------------------------	--

# ILS or LOC RWY 28R

CHICAGO O'HARE INTL (ORD)

From VOGLR: RNAV 1-GPS required.  
Aircraft not GPS equipped - RADAR required for procedure entry.  
DME or RADAR required.

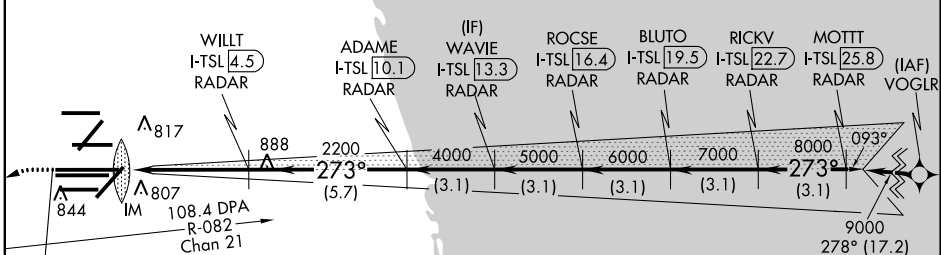


MISSED APPROACH: Climb to 1100 then climbing left turn to 4000 on heading 215° and DPA VOR/DME R-082 to DPA VOR/DME and hold.

Simultaneous approach authorized.

D-ATIS <b>135.4</b> <b>282.225</b>	CHICAGO APP CON <b>119.0 292.125</b>	O'HARE TOWERS <b>128.15 348.0</b> (Rwy 9L/27R) <b>133.0 348.0</b> (10R/28L) <b>120.75 121.15 126.9 132.7 348.0</b> (CENTER)	GND CON (TWR CENTER) <b>121.75</b> (OBND) (TWR NORTH) <b>124.125</b> (TWR SOUTH) <b>118.05</b> (ALL TWRs) <b>226.675</b>
--	---	--	---

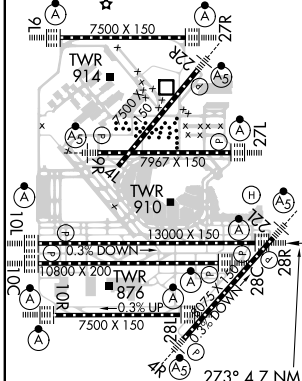
CLNC DEL <b>121.6</b>	CPDLC
--------------------------	-------



**LOCALIZER 111.1**  
I-TSL  
Chan 48

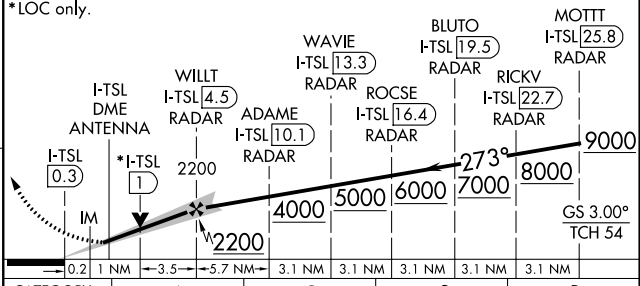
**MISSED APCH FIX DUPAGE**  
DPA  
108.4  
Chan 21

ELEV <b>680</b>	TDZE <b>651</b>
-----------------	-----------------



1100 4000 DPA  
hdg 215° R-082

VGSI and ILS glidepath not coincident (VGSI Angle 3.00/TCH 70).



HIRL all Rwy's				
TDZ/CL all Rwy's except 4L				
FAF to MAP 4.7 NM				
Knots	60	90	120	150
Min:Sec	4:42	3:08	2:21	1:53

CATEGORY	A	B	C	D
S-ILS 28R	851/18 200 (200-1/2)			
S-LOC 28R	1120/24	469 (500-1/2)	1120/50	469 (500-1)

EC-3, 15 AUG 2019 to 12 SEP 2019

EC-3, 15 AUG 2019 to 12 SEP 2019