

LOC/DME I-VQX <b>110.75</b> Chan <b>44(Y)</b>	APP CRS <b>274°</b>	Rwy ldg TDZE Apt Elev	<b>7500</b> <b>667</b> <b>680</b>
---	------------------------	-----------------------------	---

# ILS or LOC RWY 28L

CHICAGO O'HARE INTL (ORD)

Aircraft not GPS equipped - RADAR required for procedure entry. DME or RADAR required.  
From VOGLR: RNAV 1-GPS required.

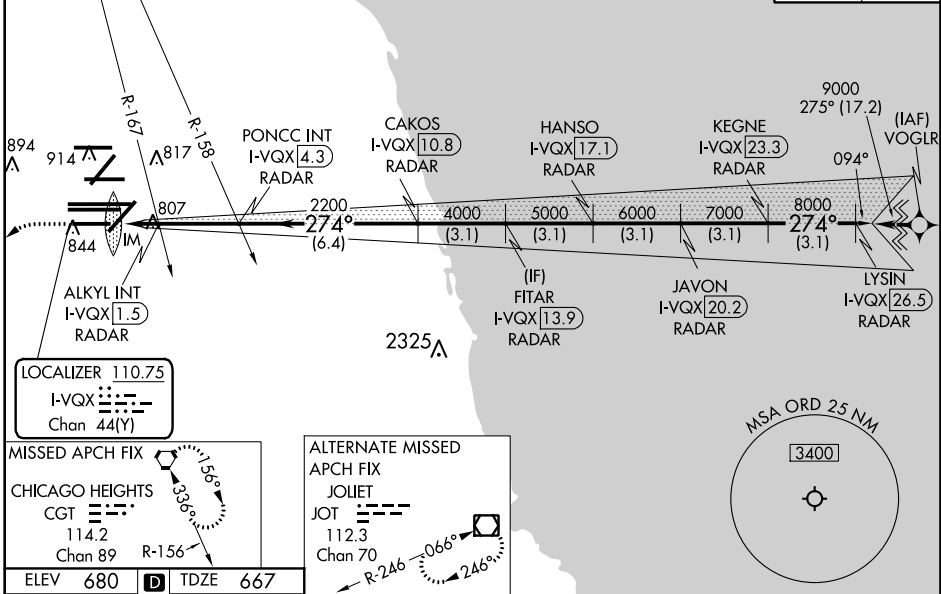
ALSf-2

MISSED APPROACH: Climb to 1200 then climbing left turn to 4000 direct CGT VORTAC and hold.

Simultaneous approach authorized.

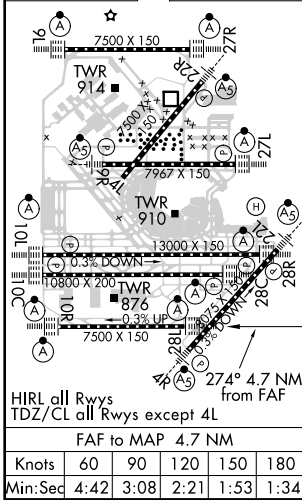
D-ATIS <b>135.4</b> <b>282.225</b>	CHICAGO APP CON <b>119.0 292.125</b>	O'HARE TOWERS <b>128.15 348.0</b> (Rwy 9L/27R) <b>133.0 348.0</b> (10R/28L) <b>120.75 121.15 126.9 132.7 348.0</b> (CENTER)	GND CON (TWR CENTER) <b>124.125</b> (TWR NORTH) <b>121.75</b> (OBND) (TWR SOUTH) <b>121.9</b> (IBND) <b>226.675</b> (ALL TWSR)
--	---	--	--

CLNC DEL <b>121.6</b>	CPDLC
--------------------------	-------



EC-3, 15 AUG 2019 to 12 SEP 2019

EC-3, 15 AUG 2019 to 12 SEP 2019



ELEV 680	TDZE 667				
1200	4000	CGT	*LOC only.		
I-VQX [0.3] RADAR	*I-VQX [0.8] RADAR	PONCC INT I-VQX [4.3] RADAR	FITAR I-VQX [13.9] RADAR	JAVON I-VQX [20.2] RADAR	LYSIN I-VQX [26.5] RADAR
ALKYL INT I-VQX [1.5] RADAR	CAKOS I-VQX [10.8] RADAR	HANSO I-VQX [17.1] RADAR	KEKNE I-VQX [23.3] RADAR		
2200	4000	5000	6000	7000	8000
274°	274°	274°	274°	274°	274°
0.2	0.9	0.7	2.9 NM	6.4 NM	3.1 NM
3.1 NM	3.1 NM	3.1 NM	3.1 NM	3.1 NM	3.1 NM
CATEGORY	A	B	C	D	
S-ILS 28L	867/18 200 (200-½)				
S-LOC 28L	1240/24	573 (600-½)	1240-1/4	573 (600-1/4)	
ALKYL FIX MINIMUMS (DUAL VOR RECEIVERS OR DME REQUIRED)					
S-LOC 28L	1060/24	393 (400-½)	1060/35	393 (400-5/8)	