

LOC/DME I-AIC 110.5 Chan 42	APP CRS 273°	Rwy ldg TDZE Apt Elev	7782 654 680
---	------------------------	-----------------------------	---

ILS or LOC RWY 27L

CHICAGO O'HARE INTL (ORD)

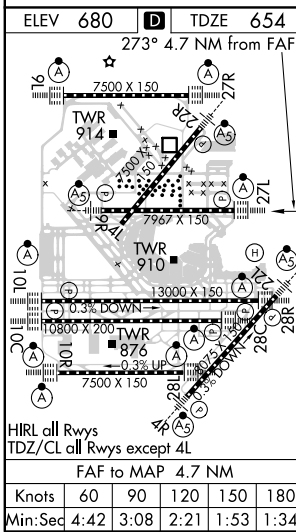
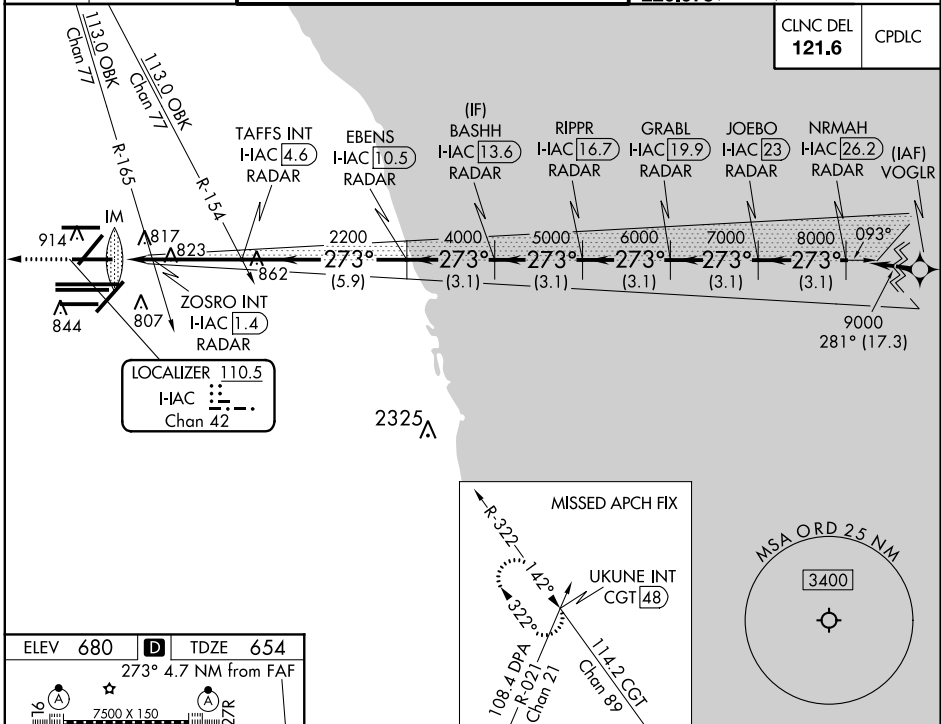
From VOGLR: RNAV 1-GPS required.
 Aircraft not GPS equipped - RADAR required for procedure entry.
 DME or RADAR required.

ALSF-2

MISSED APPROACH: Climb to 1200 then climbing right turn to 4000 on heading 295° and on CGT VORTAC R-322 to UKUNE INT/CGT 48 DME and hold.

Simultaneous approach authorized.

D-ATIS 135.4	CHICAGO APP CON 119.0 292.125	O'HARE TOWERS 128.15 348.0 (Rwy 9L/27R) 133.0 348.0 (10R/28L) 120.75 121.15 126.9 132.7 348.0 (CENTER)	GND CON (TWR CENTER) 124.125 (TWR NORTH) 121.75 (OBND) (TWR SOUTH) 121.9 (IBND) 226.675 (ALL TWSR)
------------------------	---	--	--



1200	4000	CGT R-322	UKUNE INT	VGSI and ILS glidepath not coincident (VGSI Angle 3.00/TCH 67).						
*LOC only										
I-AIC	DME	ANTENNA	TAFSS INT	EBENS	BASHH	RIPPR	GRABL	JOEBO	NRMAH	
I-AIC	DME	ANTENNA	I-AIC	I-AIC	I-AIC	I-AIC	I-AIC	I-AIC	I-AIC	
0.1	0.1		4.6	10.5	13.6	16.7	19.9	23	26.2	
			2200	2200	4000	5000	6000	7000	9000	
			0.1	0.1	3.1 NM	3.1 NM	3.1 NM	3.1 NM	3.1 NM	
CATEGORY	A				B			C		D
S-ILS 27L	854/18 200 (200-1/2)									
S-LOC 27L	1160/24	506 (500-1/2)			1160/55			506 (500-1)		
ZOSRO FIX MINIMUMS (DUAL VOR RECEIVERS OR DME REQUIRED)										
S-LOC 27L	1080/24	426 (400-1/2)			1080/40					426 (400-3/4)

EC-3, 15 AUG 2019 to 12 SEP 2019

EC-3, 15 AUG 2019 to 12 SEP 2019