

| | | | |
|--------------|-------------|--------------|------|
| LOC I-RXZ | APP CRS | Rwy ldg TDZE | 7500 |
| 111.3 | 223° | 652 | |
| | | Apt Elev | 680 |

ILS or LOC RWY 22R

CHICAGO O'HARE INTL (ORD)

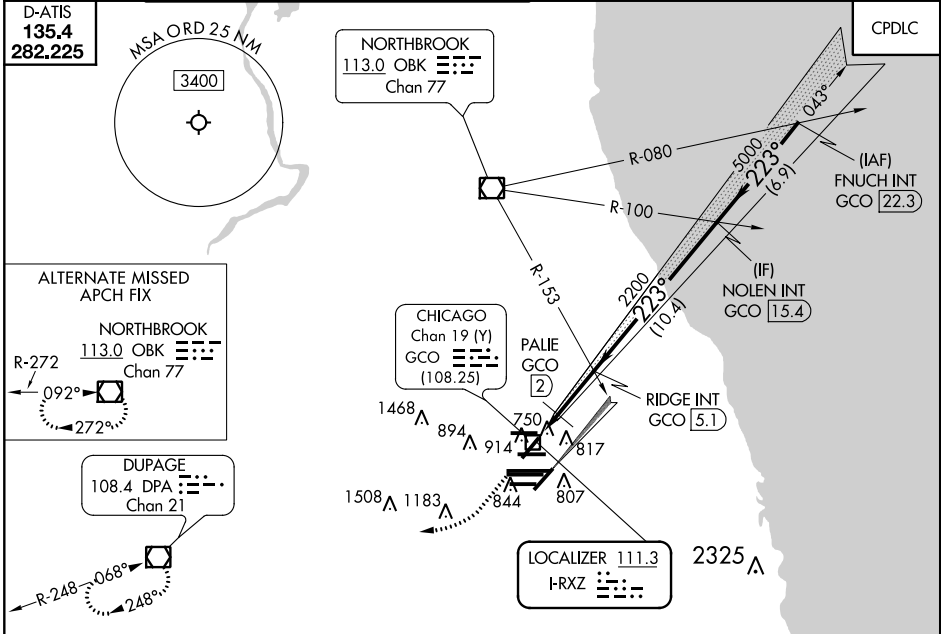
RADAR required for procedure entry.

Simultaneous approach authorized.
*DME from GCO DME.

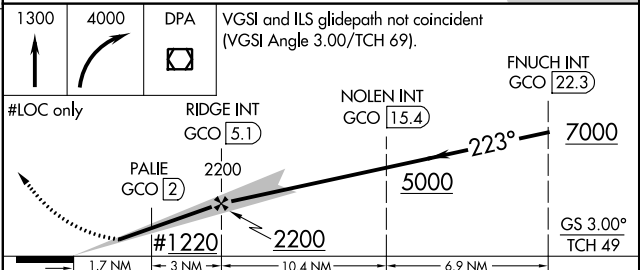
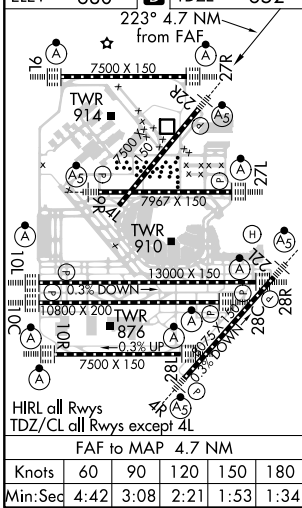
MALSR

MISSED APPROACH: Climb to 1300 then climbing right turn to 4000 direct DPA VOR/DME and hold.

| | | | | |
|----------------------|---|--|--|--------------|
| CHICAGO APP CON | O'HARE TOWERS | GND CON | (TWR CENTER) | CLNC DEL |
| 119.0 292.125 | 128.15 348.0 (Rwy 9L/27R) 133.0 348.0 (10R/28L) | 124.125 (TWR NORTH) 118.05 (TWR SOUTH) 226.675 (ALL TWRs) | 121.75 (OBND) 121.9 (IBND) | 121.6 |



| | |
|----------|----------|
| ELEV 680 | TDZE 652 |
|----------|----------|



| CATEGORY | DPA | | | |
|---------------------|--------------------|-------------|---------|--------------|
| | A | B | C | D |
| S-ILS 22R | 852/18 200 (200-½) | | | |
| S-LOC 22R | 1220/24 | 568 (600-½) | 1220-1¼ | 568 (600-1¼) |
| C CIRCLING | 1220-1 | 540 (600-1) | 1220-1½ | 1460-2½ |
| *PALIE FIX MINIMUMS | | | | |
| S-LOC 22R | 980/24 | 328 (300-½) | 980/26 | 328 (300-½) |
| C CIRCLING | 1220-1 | 540 (600-1) | 1220-1½ | 1460-2½ |

EC-3, 15 AUG 2019 to 12 SEP 2019

EC-3, 15 AUG 2019 to 12 SEP 2019